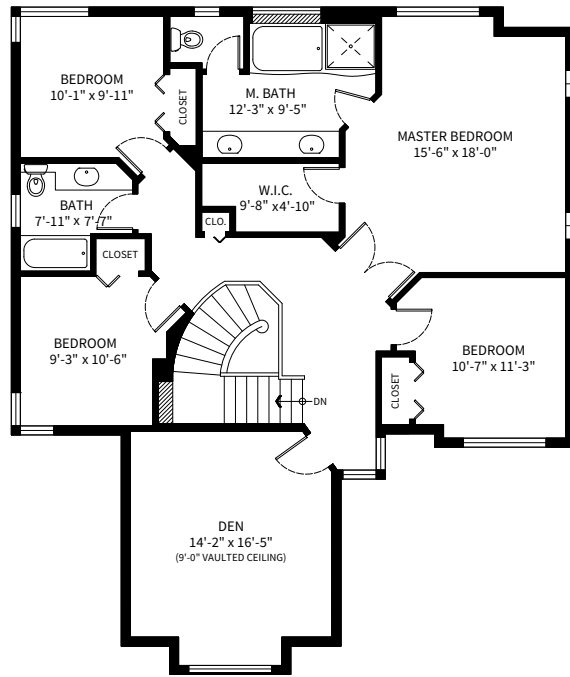


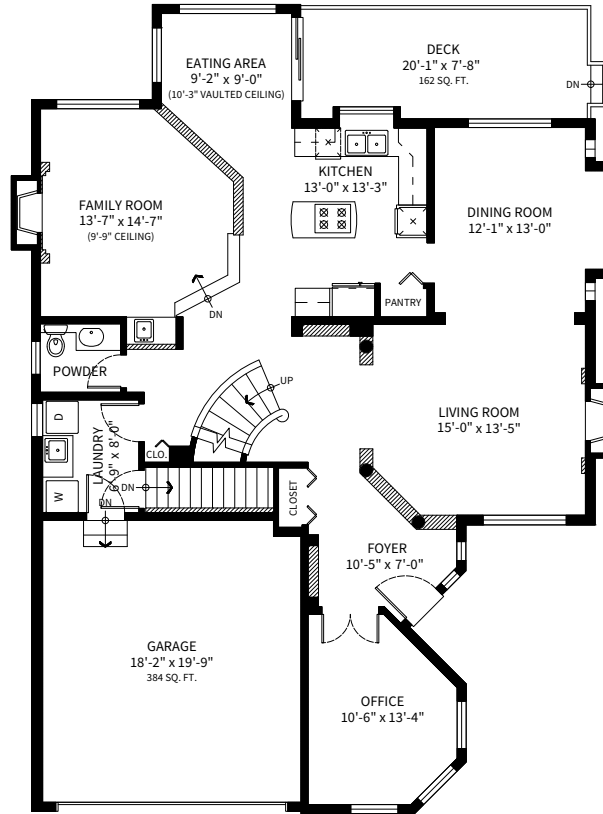
132 Cedarwood Drive, Port Moody, BC

Upper Floor: 1445 SQ. FT.
 Main Floor: 1444 SQ. FT.
 Lower Floor: 1445 SQ. FT.
Total: 4335 SQ. FT.

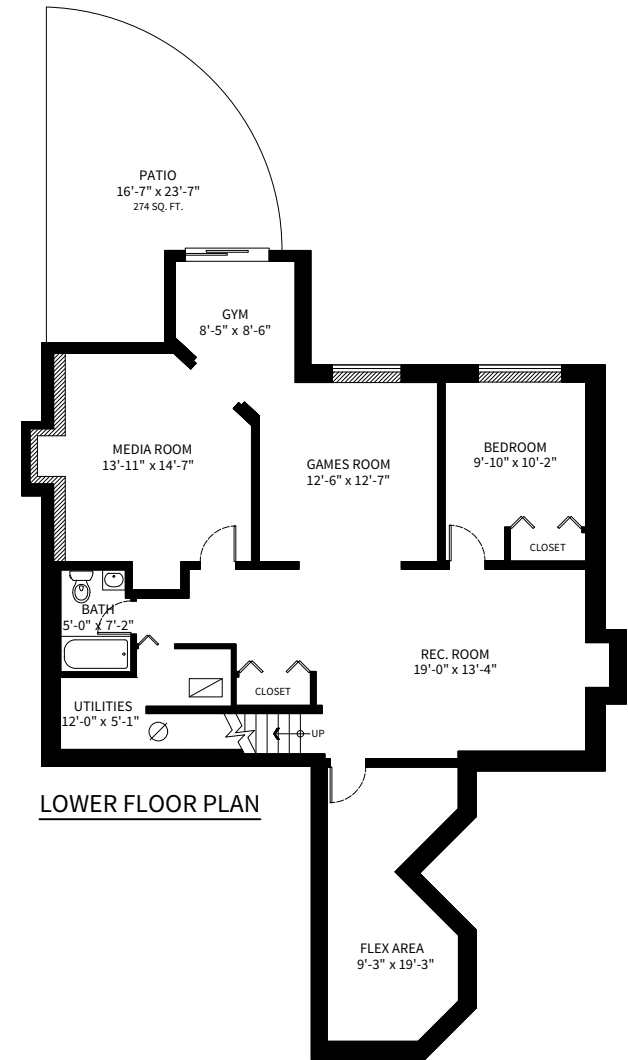
Deck: 162 SQ. FT.
 Garage: 384 SQ. FT.
 Patio: 274 SQ. FT.



UPPER FLOOR PLAN
 Ceiling Height: 8'-0"



MAIN FLOOR PLAN
 Ceiling Height: 8'-11"



LOWER FLOOR PLAN

0 2' 4' 8'



Adil Dinani
 604-771-3495
 adil@dinani.ca

floor plan designed by
 ishot.ca Enterprises Inc.
 604-368-7979
 http://ishot.ca