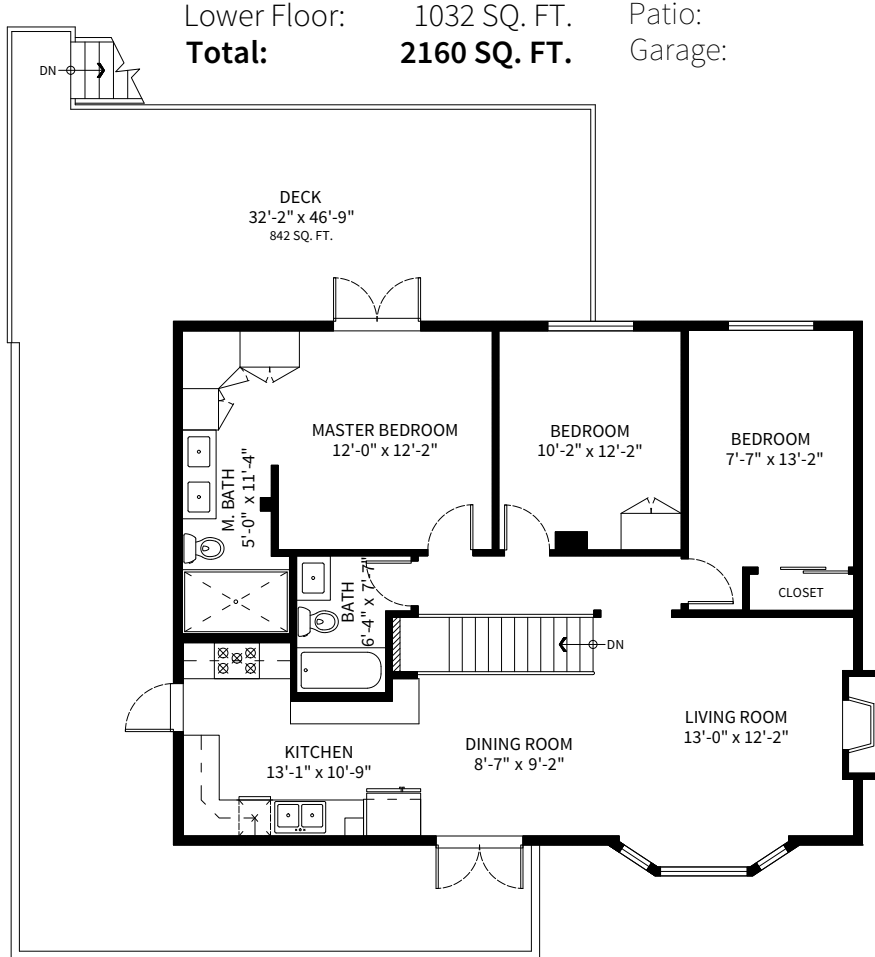
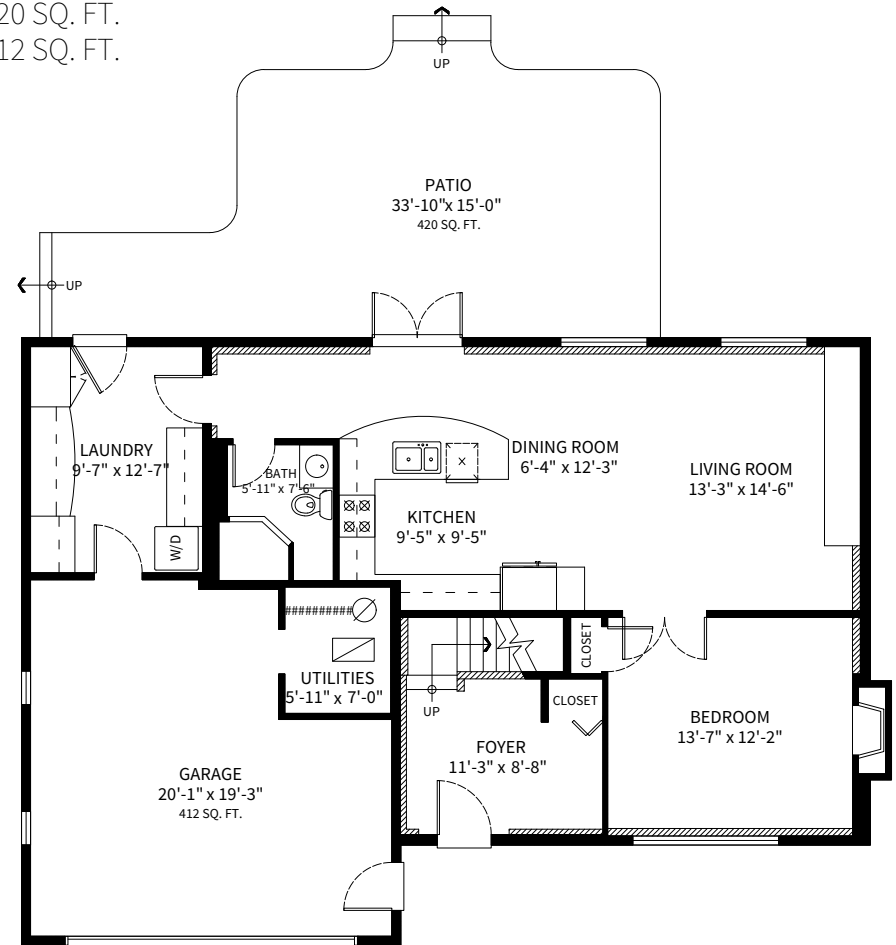


2928 Cumberland Street, Port Coquitlam, BC

Upper Floor: 1128 SQ. FT. Deck: 842 SQ. FT.
 Lower Floor: 1032 SQ. FT. Patio: 420 SQ. FT.
Total: 2160 SQ. FT. Garage: 412 SQ. FT.



UPPER FLOOR PLAN
 Ceiling Height: 8'-0"



LOWER FLOOR PLAN



Adil Dinani
 604-771-3495
 adil@dinani.ca

floor plan designed by
 ishot.ca Enterprises Inc.
 604-368-7979
 http://ishot.ca