

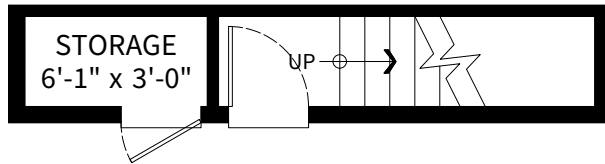
1039 Stewart Avenue, Coquitlam BC - Laneway House

Square Footage

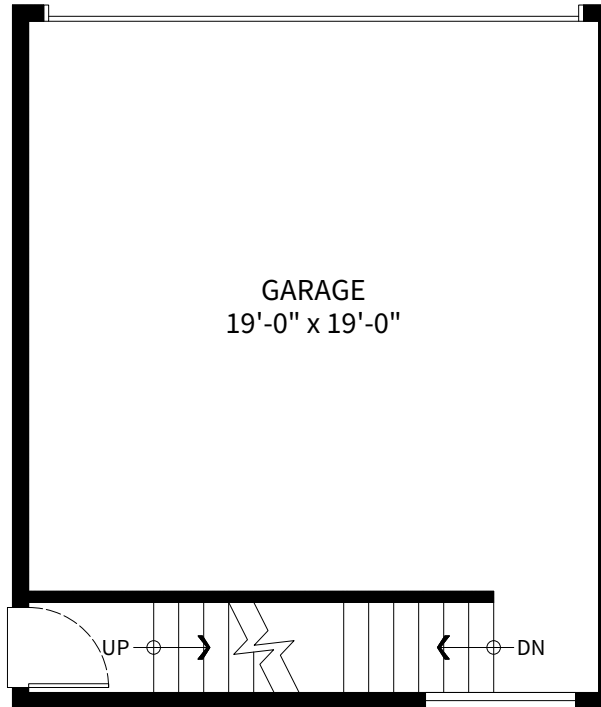
Upper Floor: 471 SQ. FT.
Main Floor: 25 SQ. FT.
Total Space: 496 SQ. FT.

Other Square Footage

Garage: 446 SQ. FT.

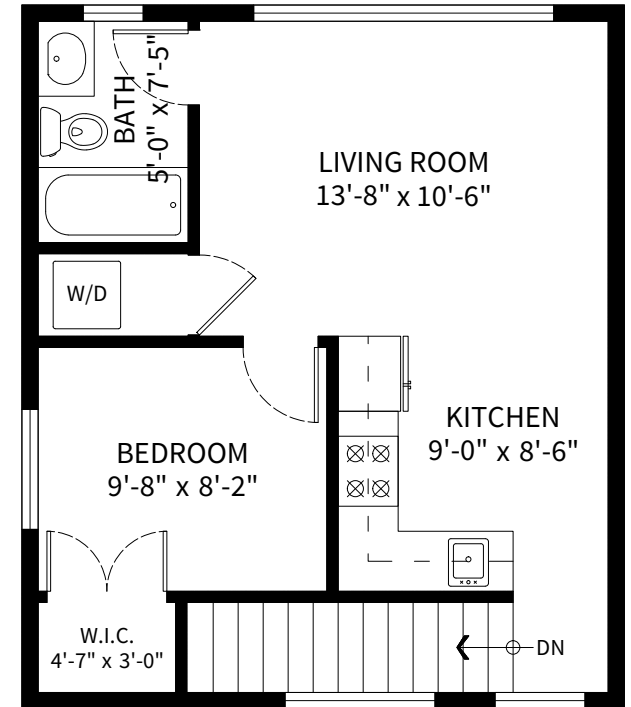


GARAGE ENTRANCE



GARAGE PLAN

Ceiling Height: 8'-6"



LANEWAY HOUSE PLAN

Ceiling Height: 8'-0"



CONTACT

Adil Dinani
604-771-3495
adil@dinani.ca

floor plan designed by
ishot.ca Enterprises Inc.
604-299-9688
<http://ishot.ca>