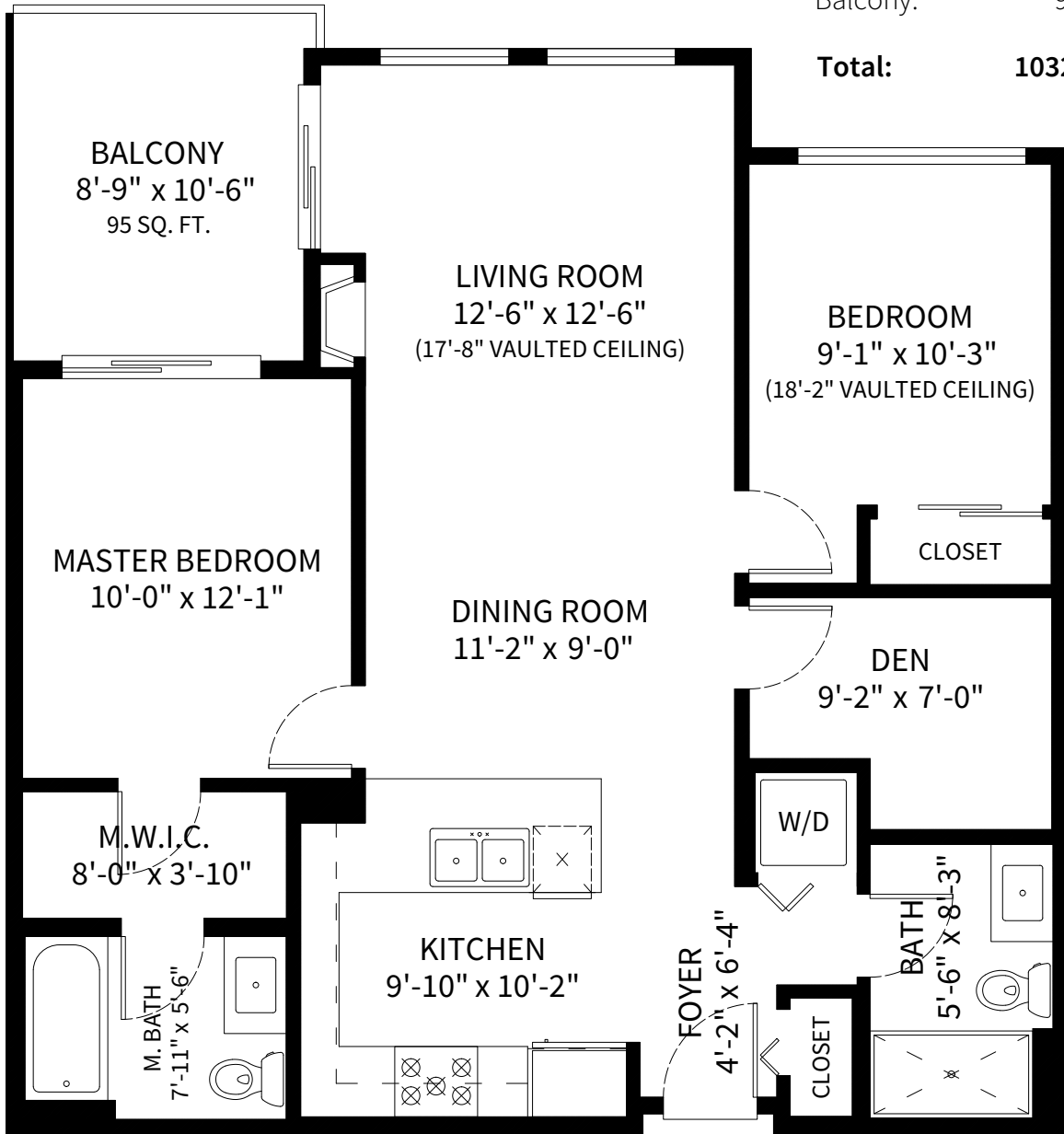


#418-101 Morrissey Road, Port Moody, BC

Finished Area: 937 SQ. FT.

Balcony: 95 SQ. FT.

Total: 1032 SQ. FT.



FLOOR PLAN
Ceiling Height: 8'-11"



Adil Dinani
604-771-3495
adil@dinani.ca

floor plan designed by
ishot.ca Enterprises Inc.
604-368-7979
<http://ishot.ca>