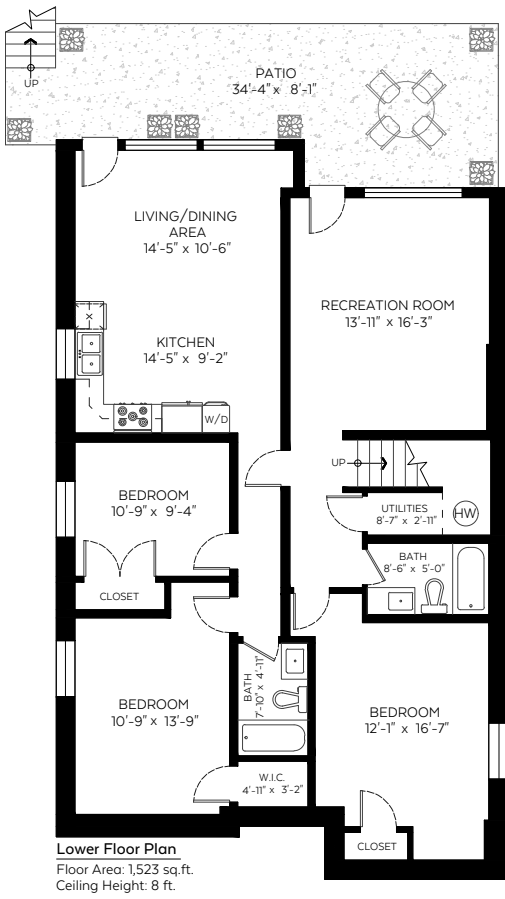
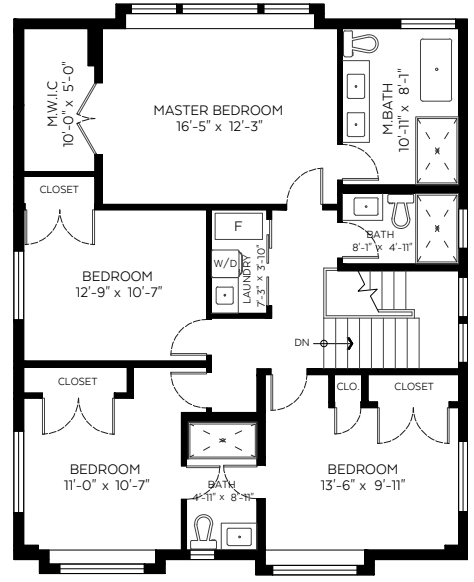


1402 Haversley Avenue,
Coquitlam, B.C.

Main Floor:	1,519 sq.ft.
Upper Floor:	1,191 sq.ft.
Lower Floor:	1,523 sq.ft.
Total:	4,233 sq.ft.

Auxiliary Area

Garage:	408 sq.ft.
Patio:	313 sq.ft.
Deck:	306 sq.ft.
Porch:	282 sq.ft.



Measured on: Jan. 27, 2019

The floor plan is not suitable for architectural/construction and is covered under E&O. © Excelsior Measuring Inc. 2019. All rights reserved for Excelsior Measuring Inc. Users shall not publish and distribute such material (in whole or in part) and/or incorporate it in other works in any form.