

**Adil Dinani**

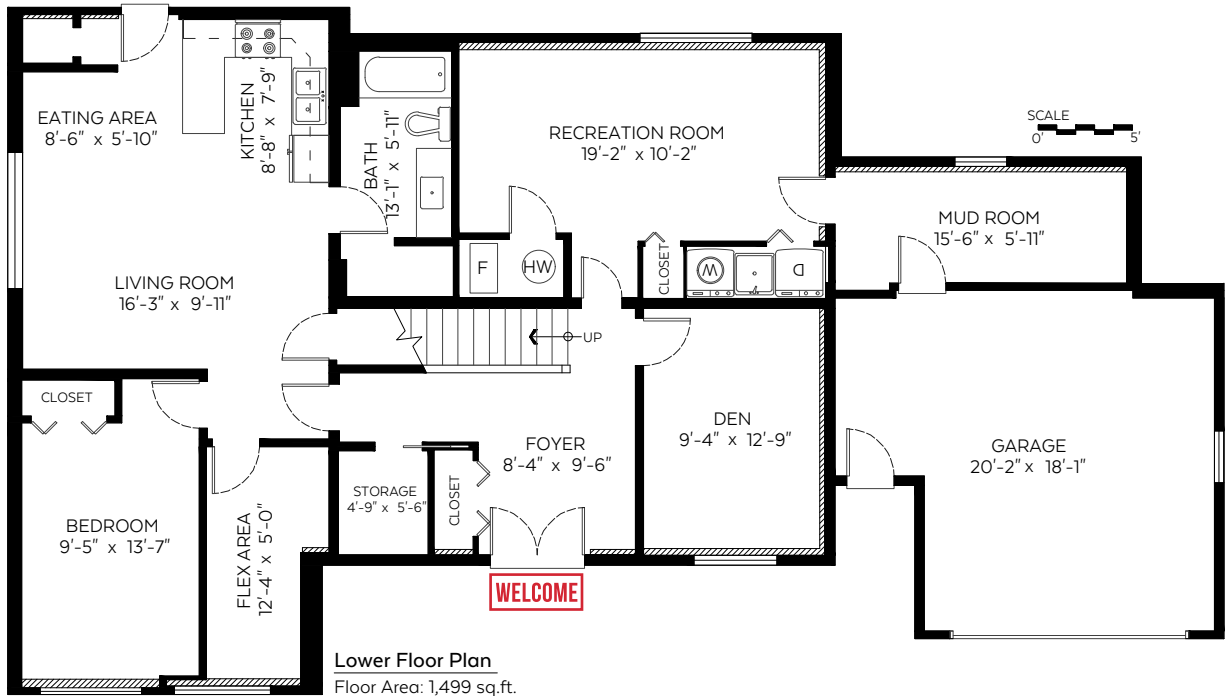
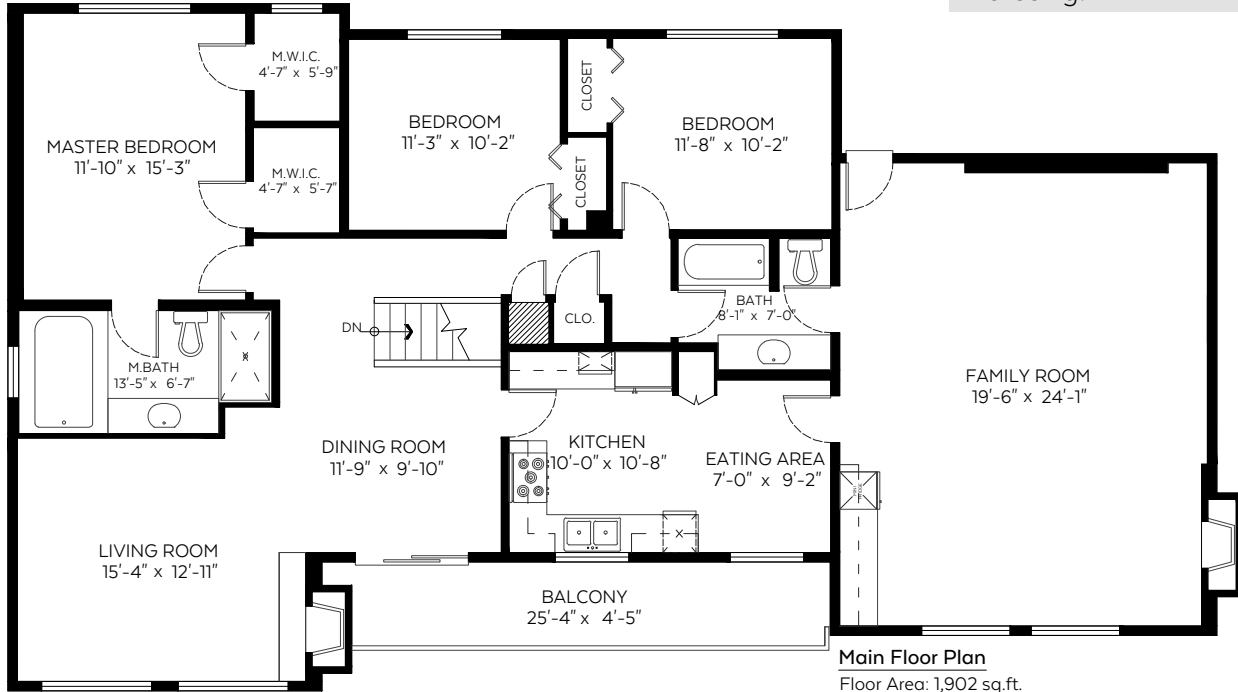
604.771.3495 | adil@dinani.ca  
www.dinani.ca | Royal LePage

802 Crestwood Drive  
Coquitlam, B.C.

Main Floor:	1,902 sq.ft.
Lower Floor:	1,499 sq.ft.
<b>Total:</b>	<b>3,401 sq.ft.</b>

**Auxiliary Area**

Garage:	348 sq.ft.
Balcony:	113 sq.ft.



Measured on: May 31, 2019

\*SQFT is calculated from Exterior wall to Exterior Wall.

The floor plan is not suitable for architectural/construction and is covered under E&O. © Excelsior Measuring Inc. 2019. All rights reserved for Excelsior Measuring Inc. Users shall not publish and distribute such material (in whole or in part) and/or incorporate it in other works in any form.