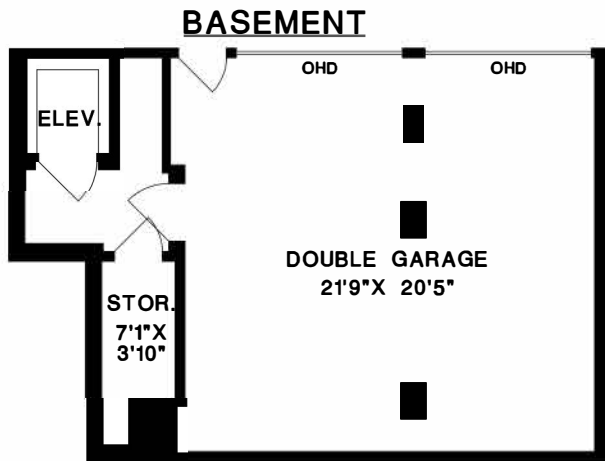
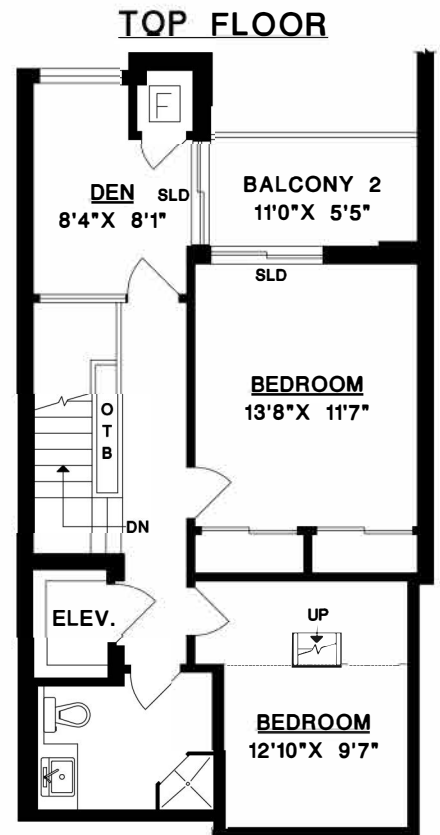
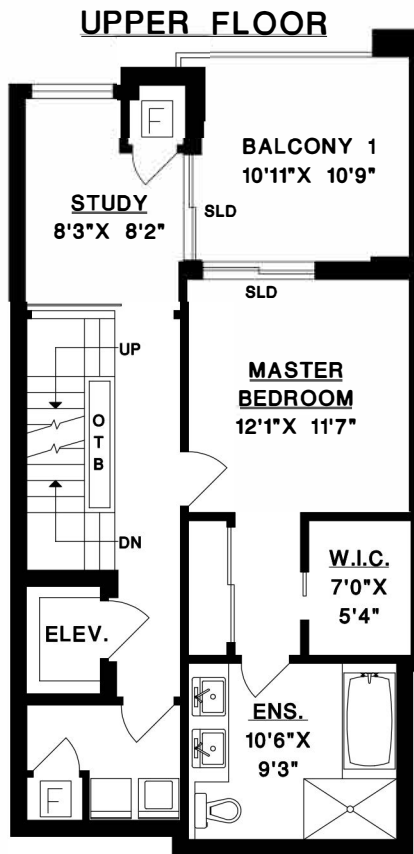
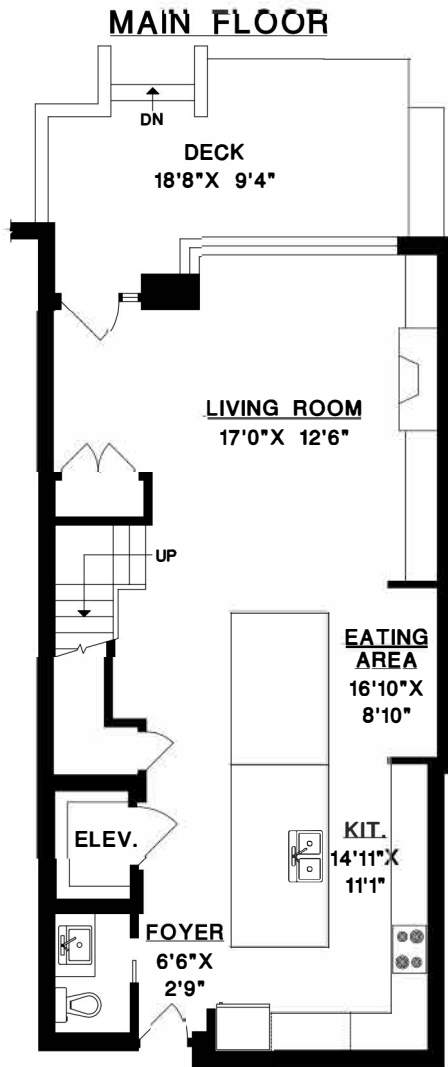


TH21 - 1281 WEST CORDOVA STREET VANCOUVER, BC

TOP FLOOR	730 SQ. FT.	GARAGE	490 SQ. FT.
UPPER FLOOR	730 SQ. FT.	BALCONY 1	126 SQ. FT.
MAIN FLOOR	877 SQ. FT.	BALCONY 2	69 SQ. FT.
BASEMENT	136 SQ. FT.	DECK	181 SQ. FT.
* TOTAL		2473 SQ. FT.	



*Area calculations taken from:
 Strata Plan LMS1073, S.L.#13,

