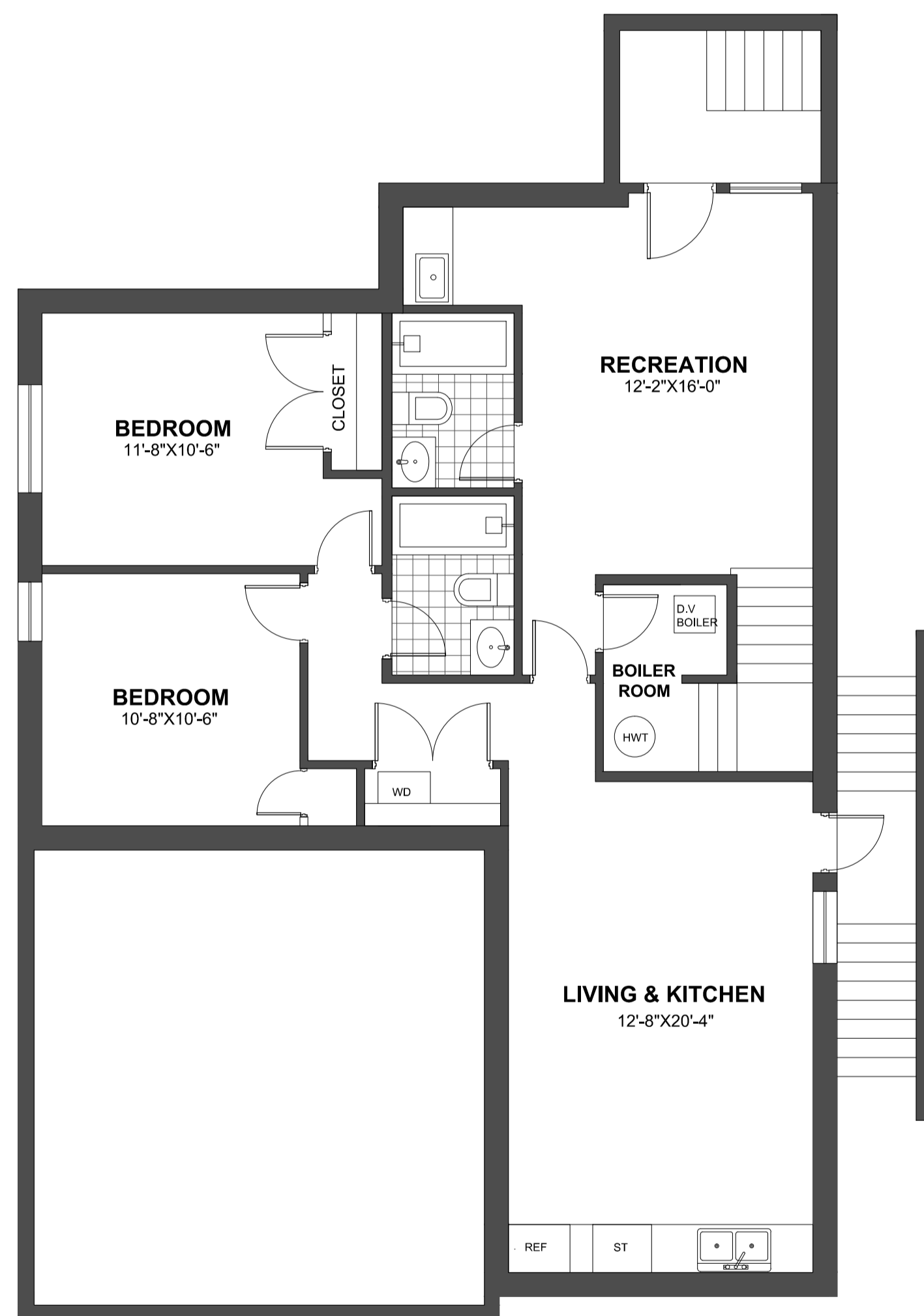


**702 ROBINSON STREET  
COQUITLAM, B.C.**

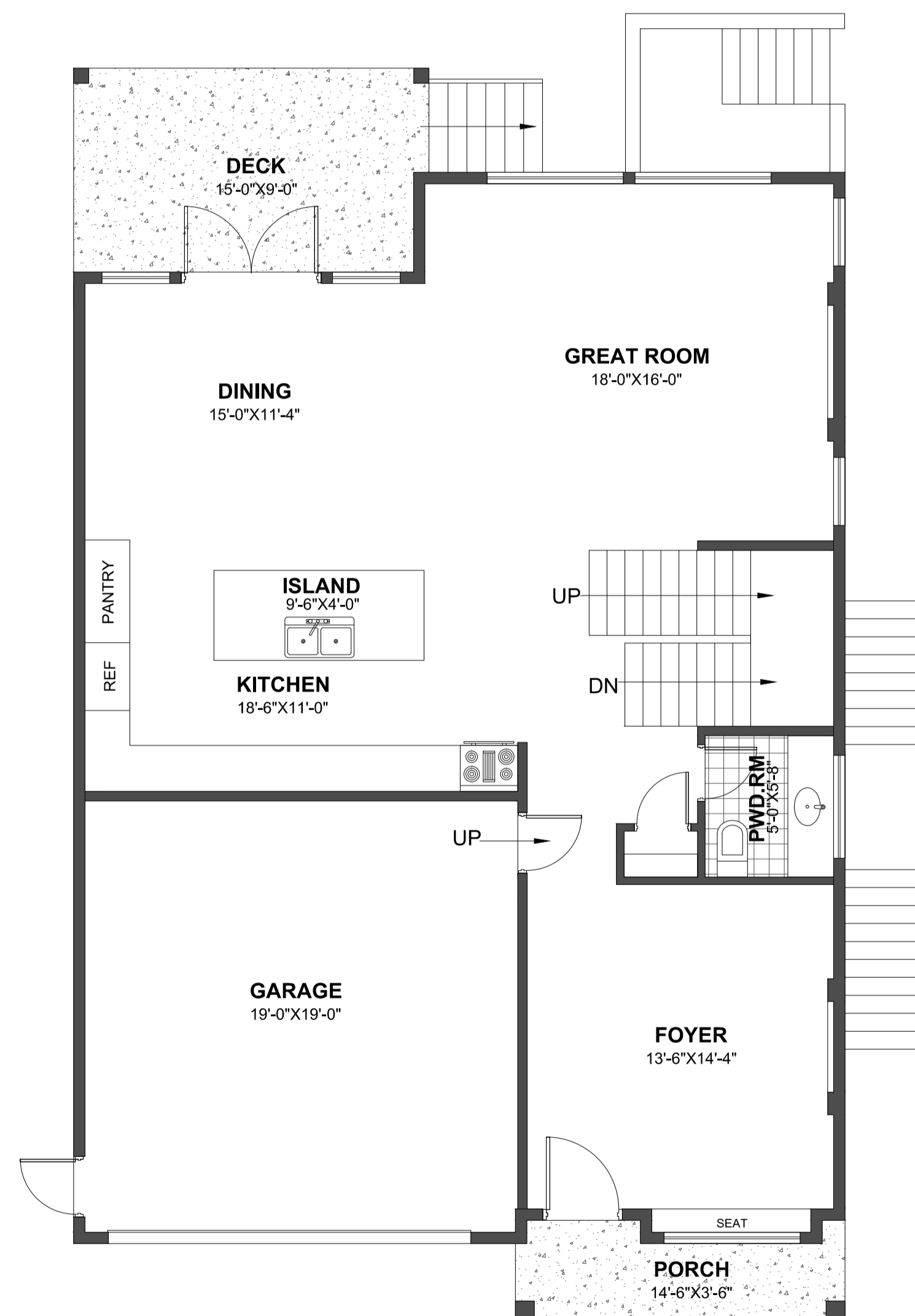
MAIN FLOOR: 1144.50 sq.ft.  
UPPER FLOOR: 1306.00 sq.ft.  
LOWER FLOOR: 1144.50 sq.ft.

**TOTAL: 3595.00 sq.ft.**



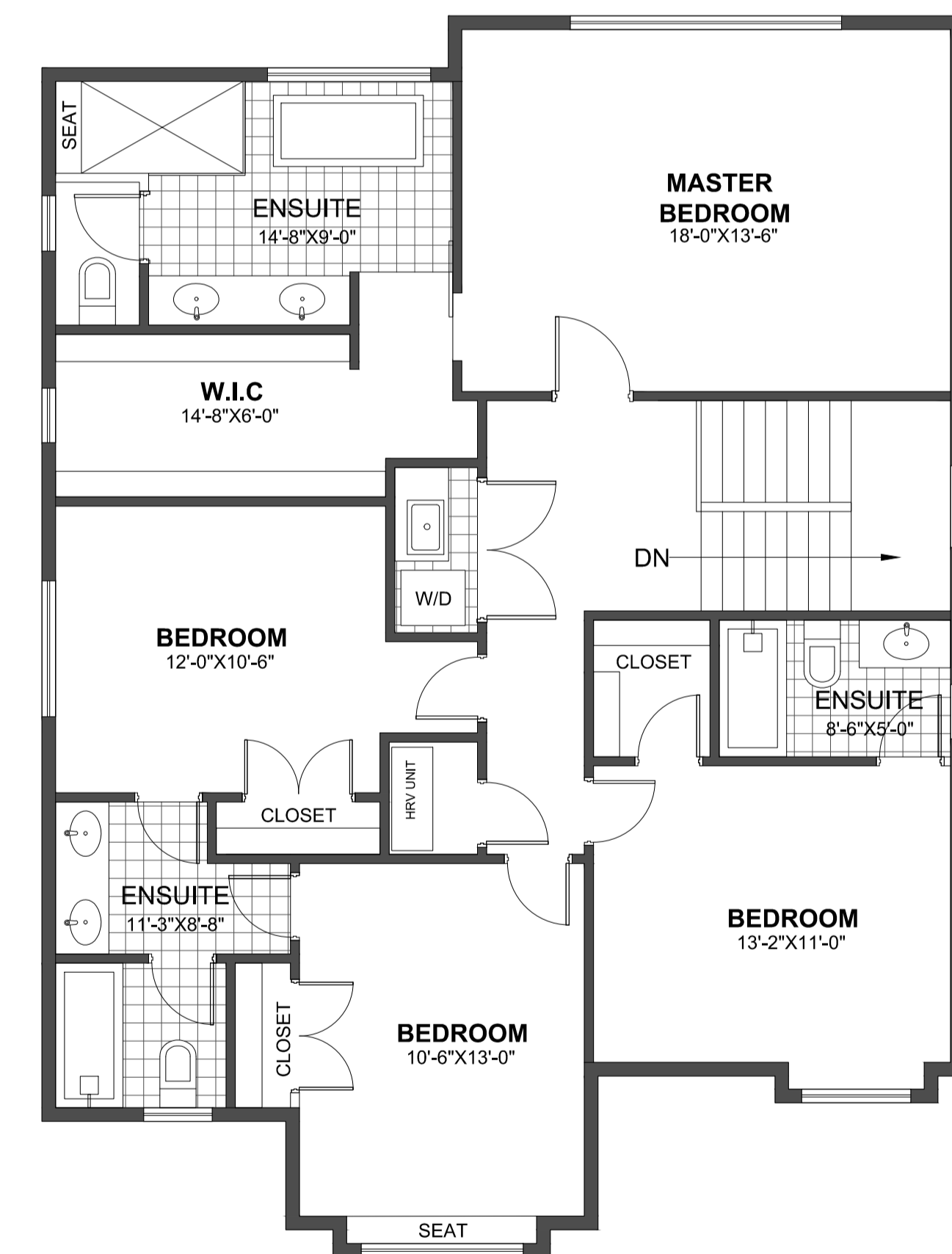
**BASEMENT FLOOR PLAN**

FLOOR AREA 1144.50sq.ft



**MAIN FLOOR PLAN**

FLOOR AREA 1144.50sq.ft



**UPPER FLOOR PLAN**

FLOOR AREA 1306.00sq.ft