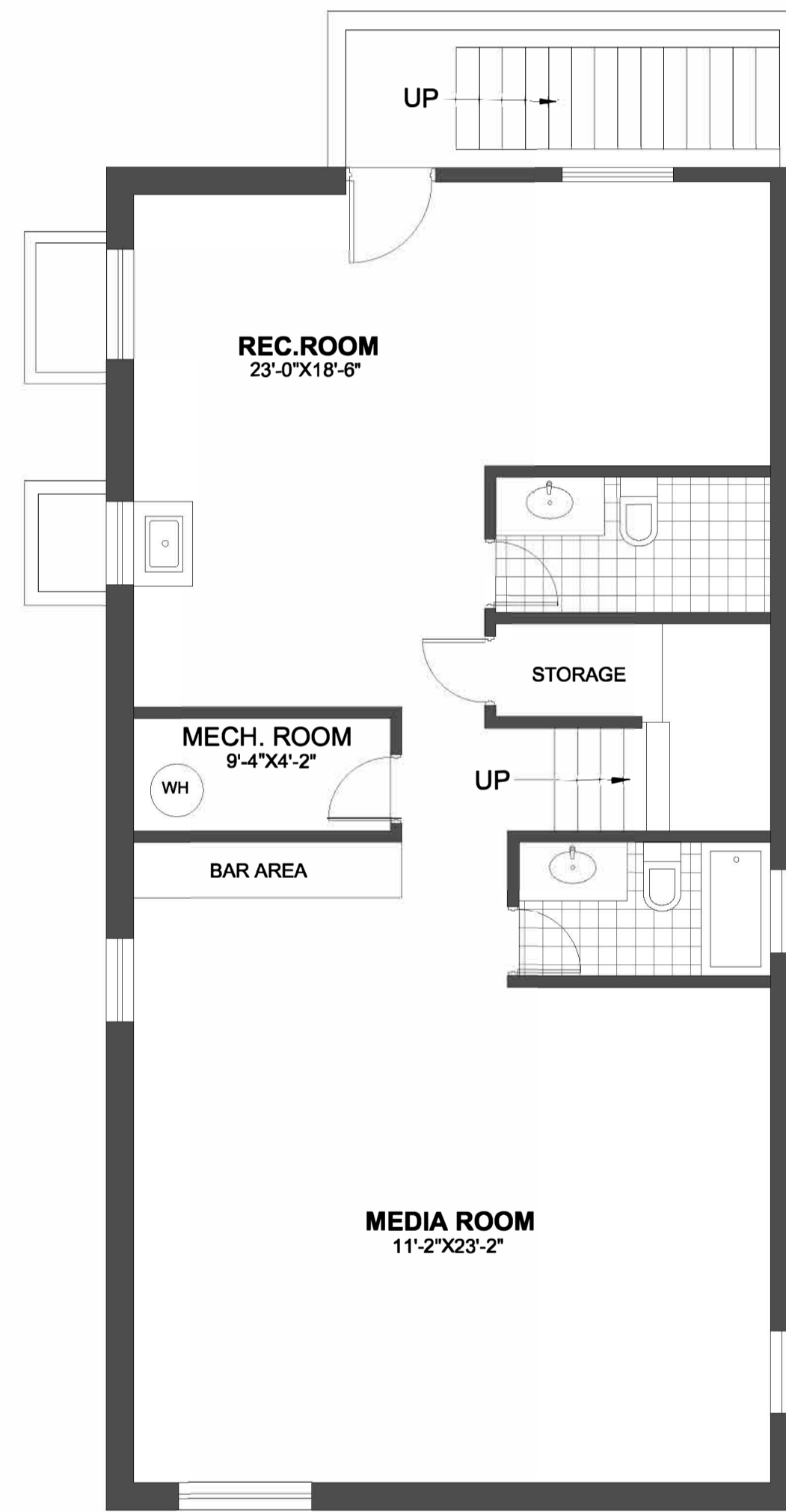




**1043 QUADLING AVENUE
COQUITLAM, B.C.**

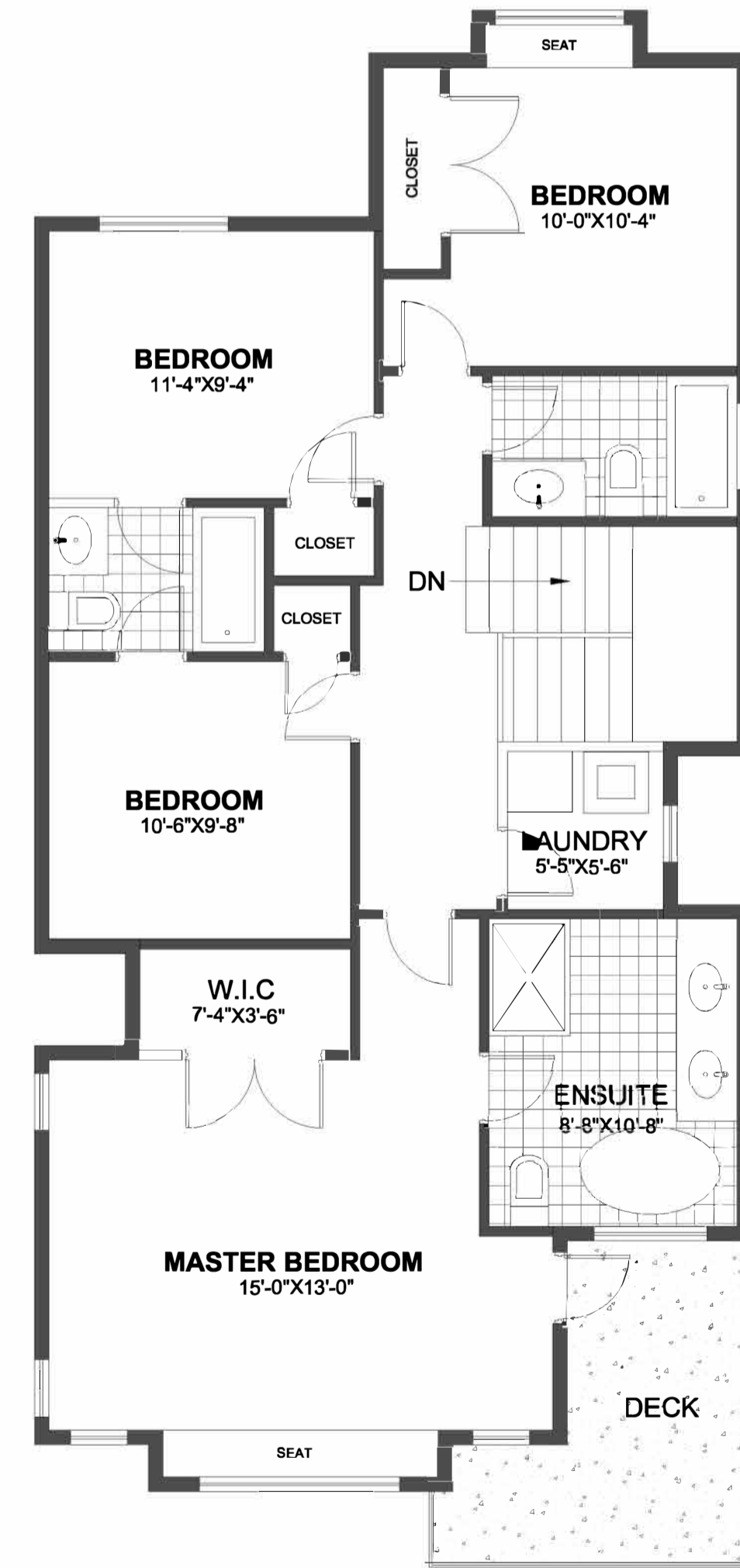
MAIN FLOOR: 1212.94 sq.ft.
 UPPER FLOOR: 1076.24 sq.ft.
 LOWER FLOOR: 1212.94 sq.ft.
 LANEWAY FLOOR: 0460.00 sq.ft.
TOTAL: 3962.12 sq.ft.



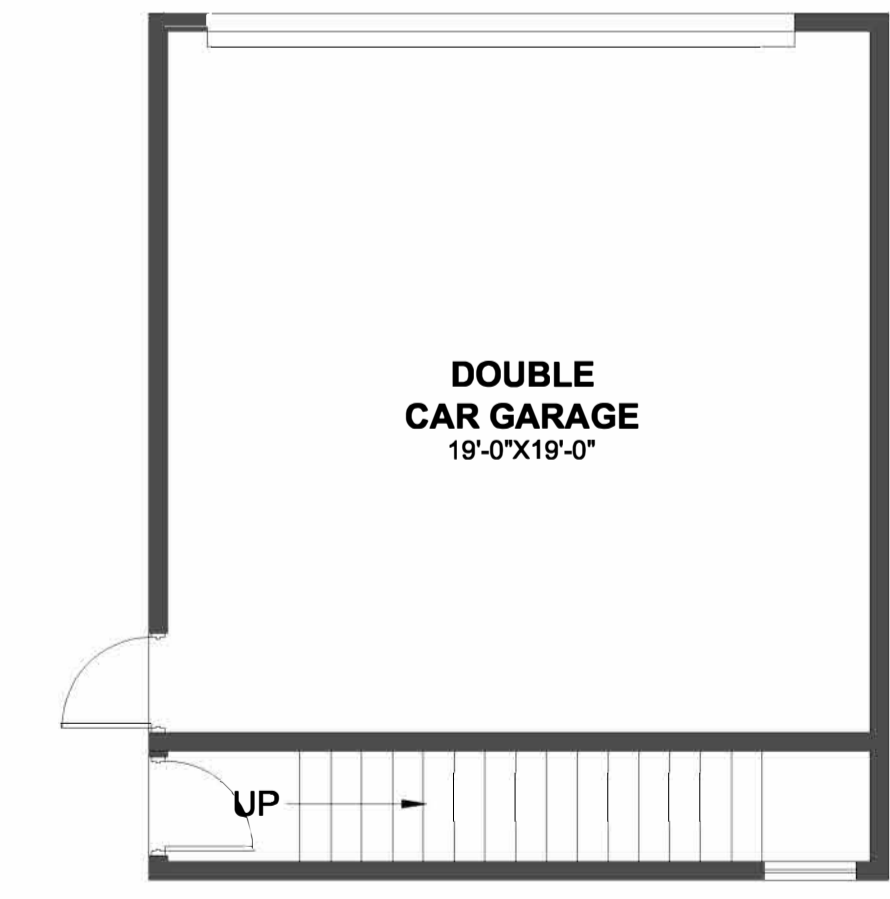
BASEMENT FLOOR PLAN
 FLOOR AREA 1212.94sq.ft



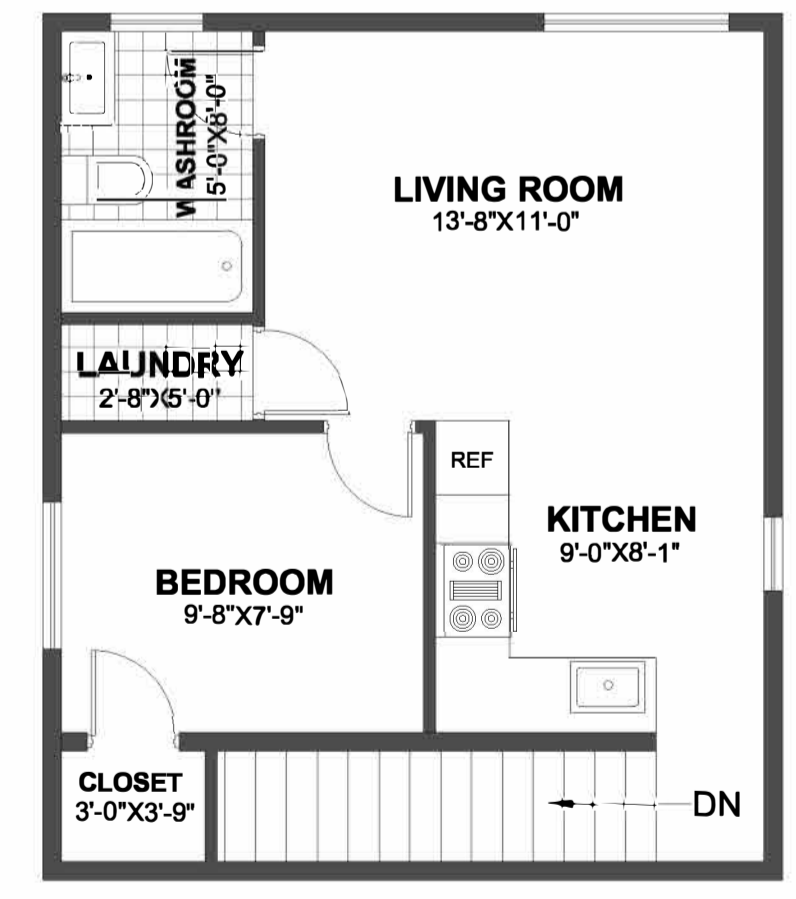
MAIN FLOOR PLAN
 FLOOR AREA 1212.94sq.ft



UPPER FLOOR PLAN
 FLOOR AREA 1076.24sq.ft



GARAGE
 FLOOR AREA 460.00sq.ft



LWH FLOOR PLAN
 FLOOR AREA 460.00sq.ft

The floor plan is not suitable for architectural/ construction and is covered under E & O. All measurements are approximate and are to be verified by the buyer if important