

Adil Dinani

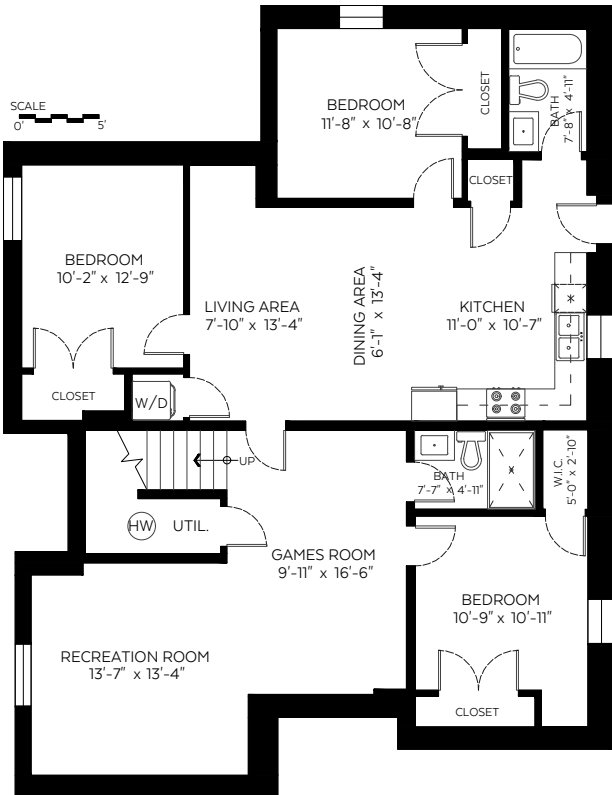
604.771.3495 | adil@dinani.ca
www.dinani.ca | Royal LePage

1511 Austin Avenue,
Coquitlam, B.C.

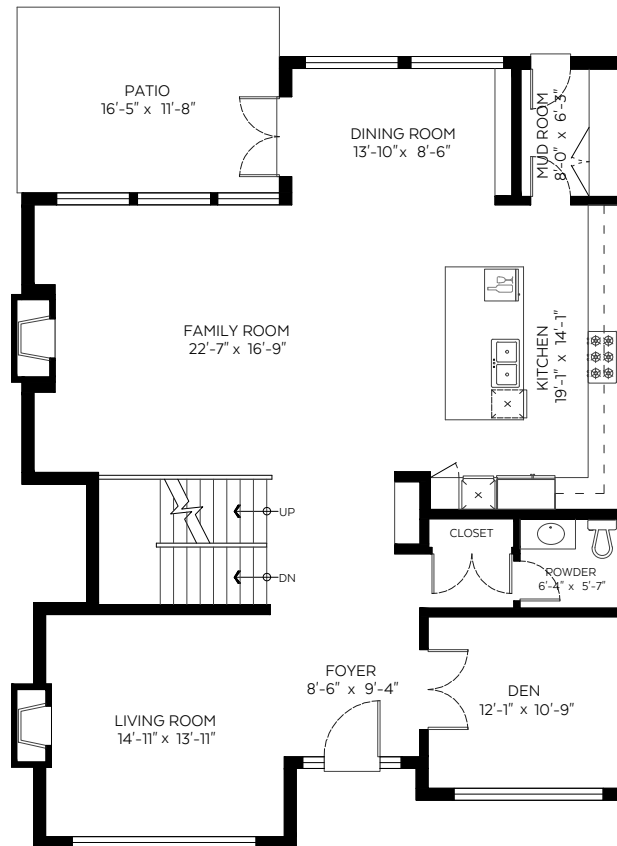
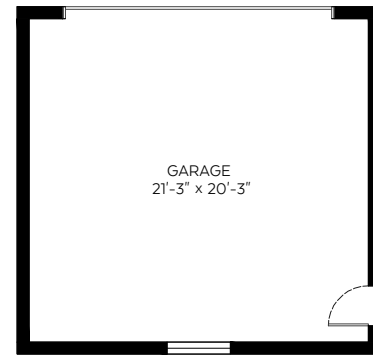
Main Floor:	1,643 sq.ft.
Upper Floor:	1,522 sq.ft.
Lower Floor:	1,643 sq.ft.
Total:	4,808 sq.ft.

Auxiliary Area

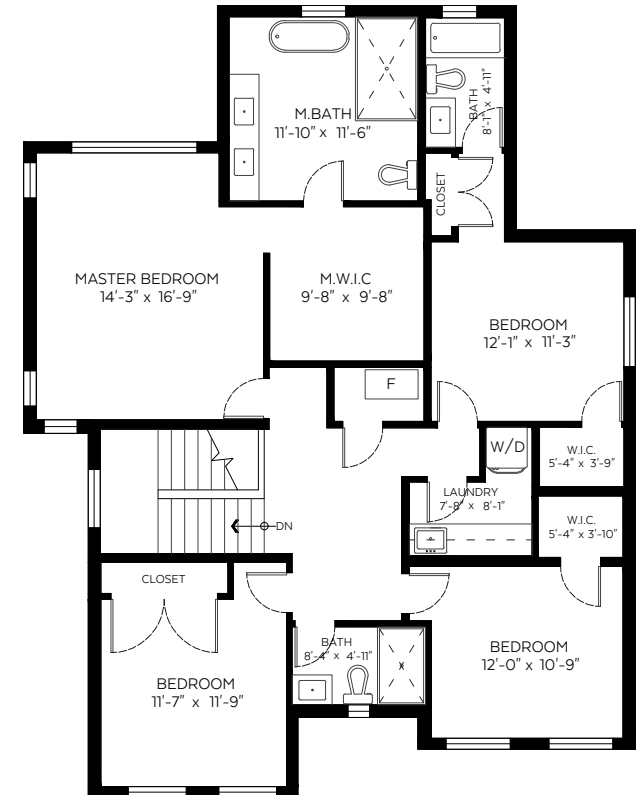
Garage:	495 sq.ft.
Patio:	191 sq.ft.



Lower Floor Plan
Floor Area: 1,643 sq.ft.
Ceiling Height: 8 ft.



Main Floor Plan
Floor Area: 1,643 sq.ft.
Ceiling Height: 10 ft.



Upper Floor Plan
Floor Area: 1,522 sq.ft.
Ceiling Height: 8 ft.