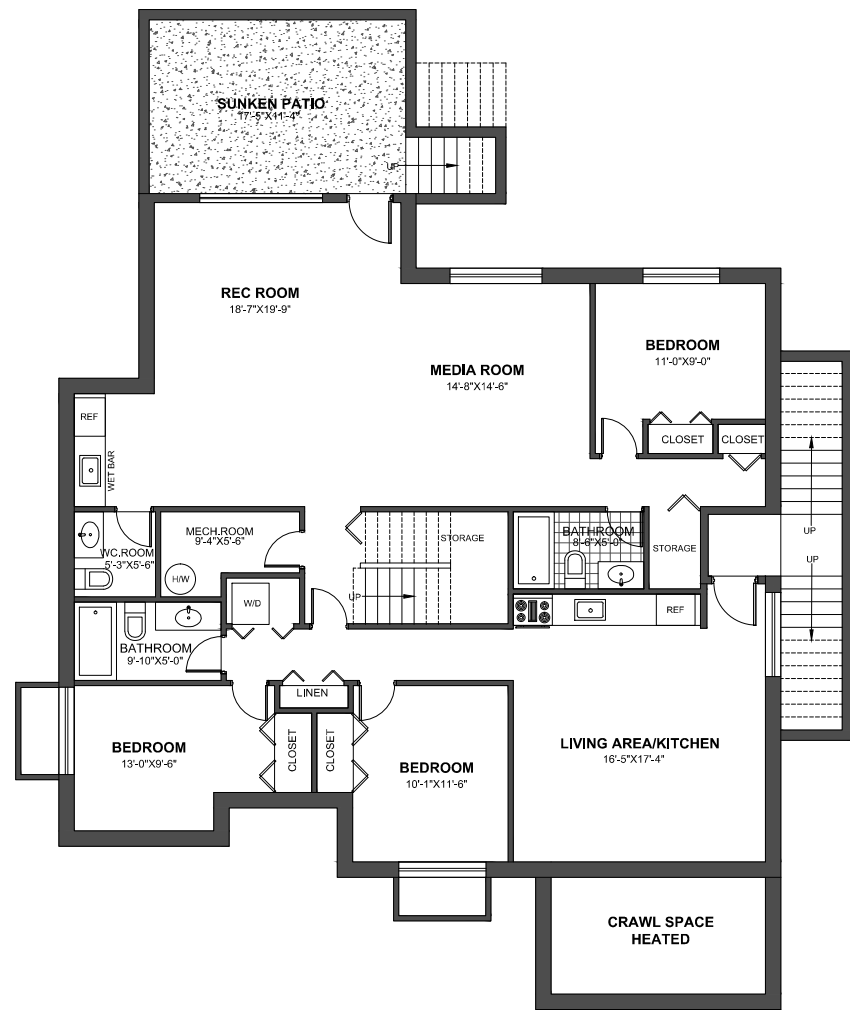


**2256 KING ALBERT AVENUE
COQUITLAM, BC**

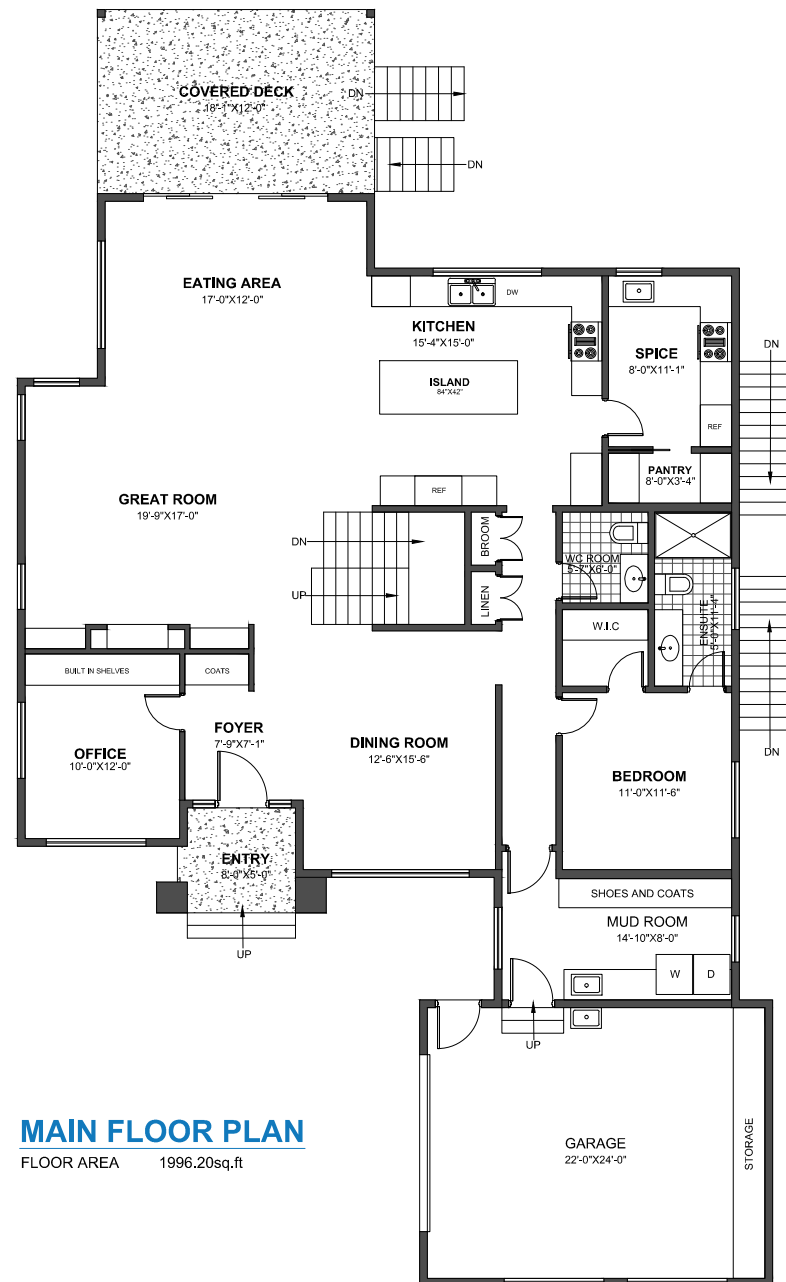
MAIN FLOOR: 1996.20 sq.ft.
UPPER FLOOR: 1631.32 sq.ft.
BASEMENT FLOOR: 1858.79 sq.ft.

TOTAL: 5486.31 sq.ft.



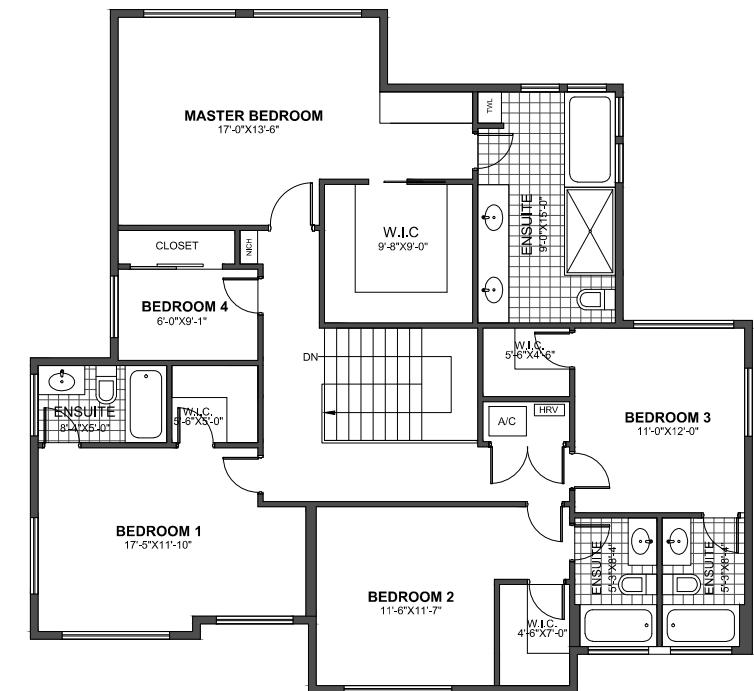
BASEMENT FLOOR PLAN

1859.78sq.ft



MAIN FLOOR PLAN

FLOOR AREA 1996.20sq.ft



UPPER FLOOR PLAN

FLOOR AREA 1631.32sq.ft