

**836 WYVERN AVENUE
COQUITLAM, BC**

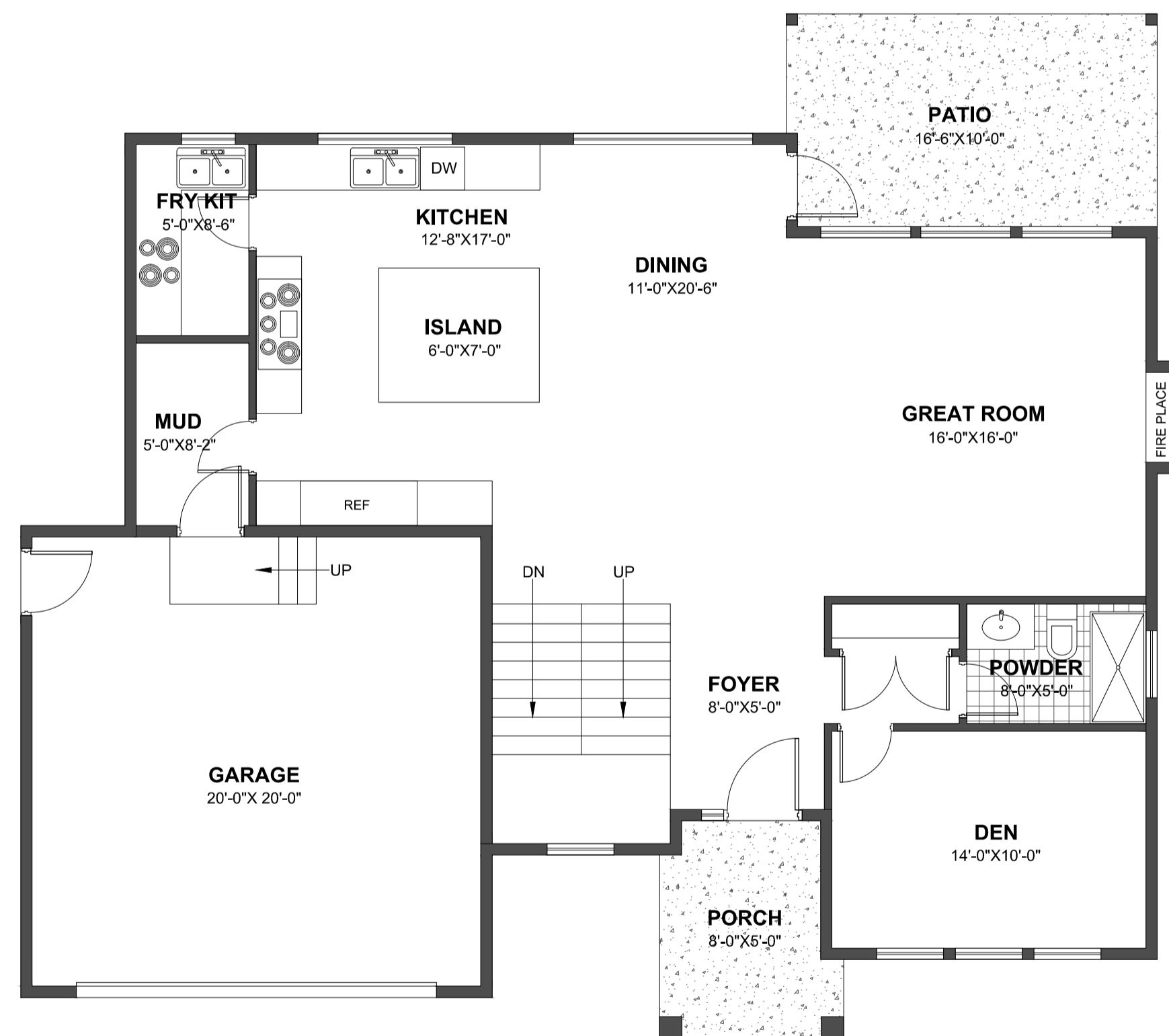
BASEMENT FLOOR: 1250.00 sq.ft.
MAIN FLOOR: 1250.00 sq.ft.
UPPER FLOOR: 1270.00 sq.ft.

TOTAL: 3770.00 sq.ft.



BASEMENT FLOOR PLAN

FLOOR AREA 1250.00sq.ft



MAIN FLOOR PLAN

FLOOR AREA 1250.00sq.ft



UPPER FLOOR PLAN

FLOOR AREA 1270.00sq.ft