

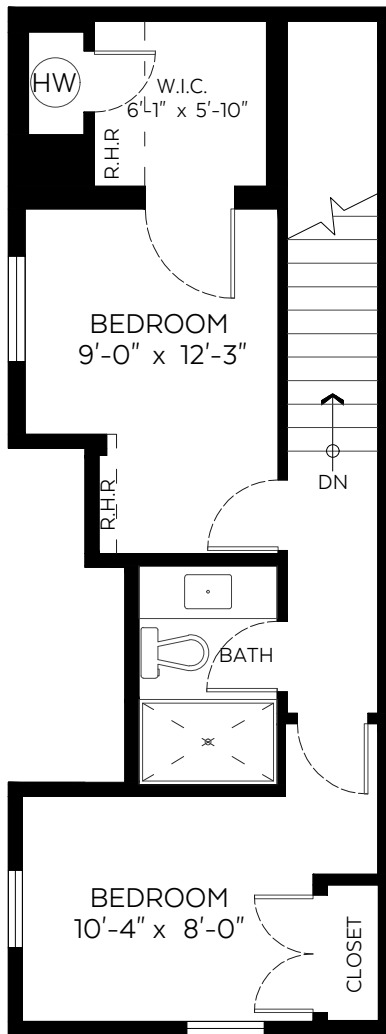
2061 E 36th Avenue,
Vancouver, B.C.

Main Floor:	595 sq.ft.
Upper Floor:	415 sq.ft.
Lower Floor:	373 sq.ft.
Total:	1,383 sq.ft.
Restricted H.R.:	35 sq.ft.

Auxiliary Area

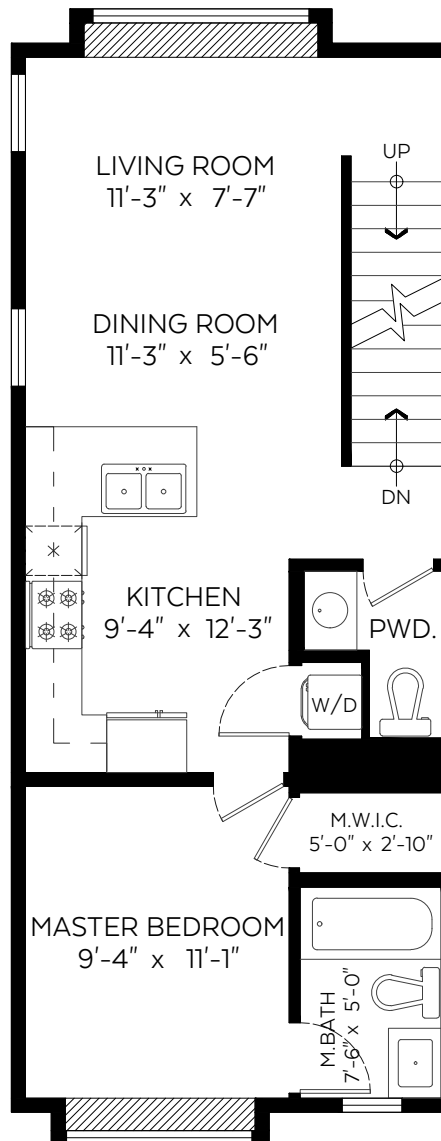
Garage:	222 sq.ft.
---------	------------

SCALE
0' 5'



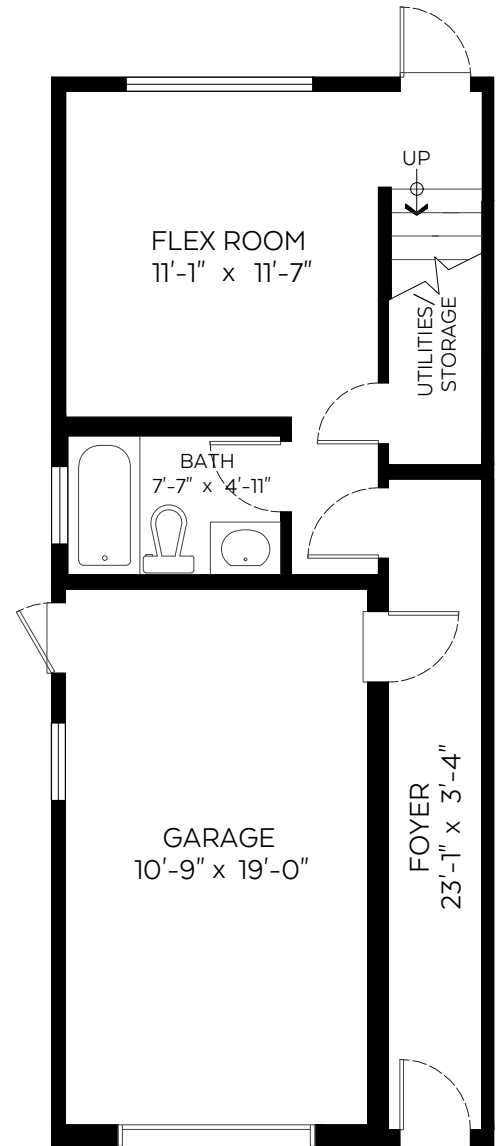
Upper Floor Plan

Floor Area: 415 sq.ft.
Ceiling Height: 9 ft.



Main Floor Plan

Floor Area: 595 sq.ft.
Ceiling Height: 9'-1"



Lower Floor Plan

Floor Area: 373 sq.ft.
Ceiling Height: 8 ft.