

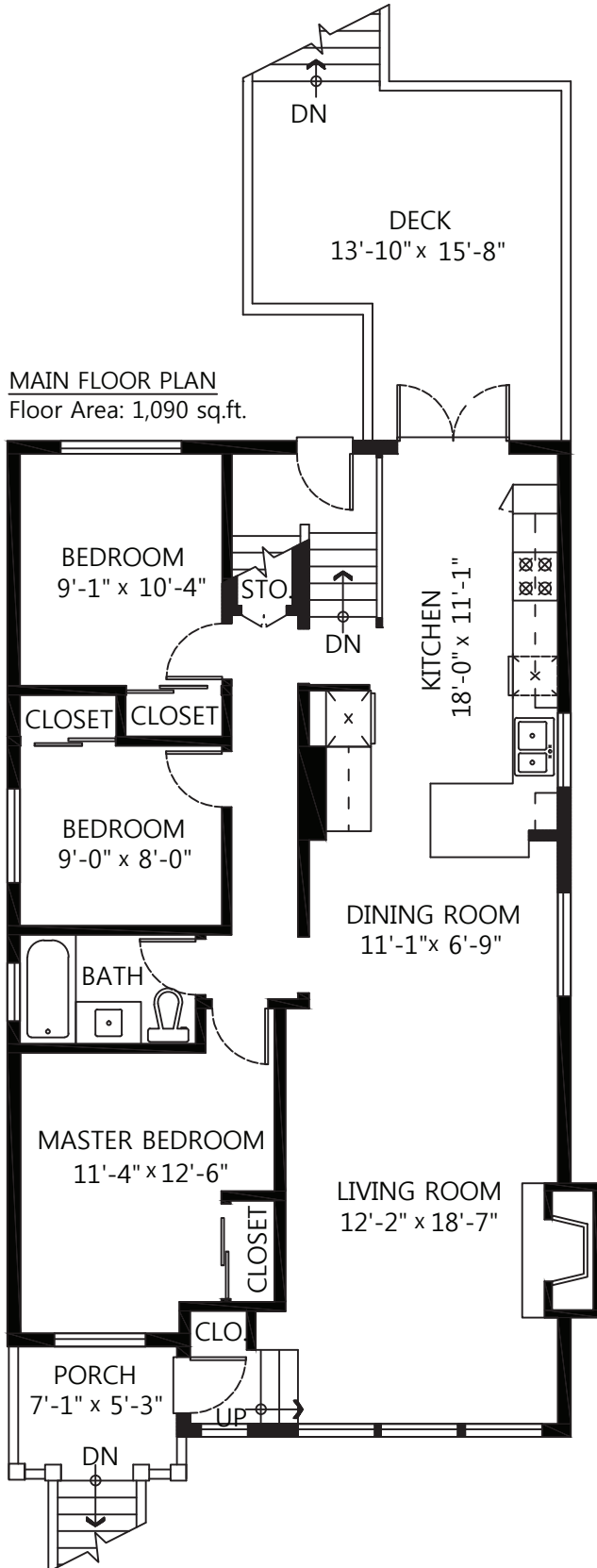
**328 W 26th Street,
North Vancouver, B.C.**

Main Floor: 1,090 sq.ft.
Lower Floor: 1,090 sq.ft.

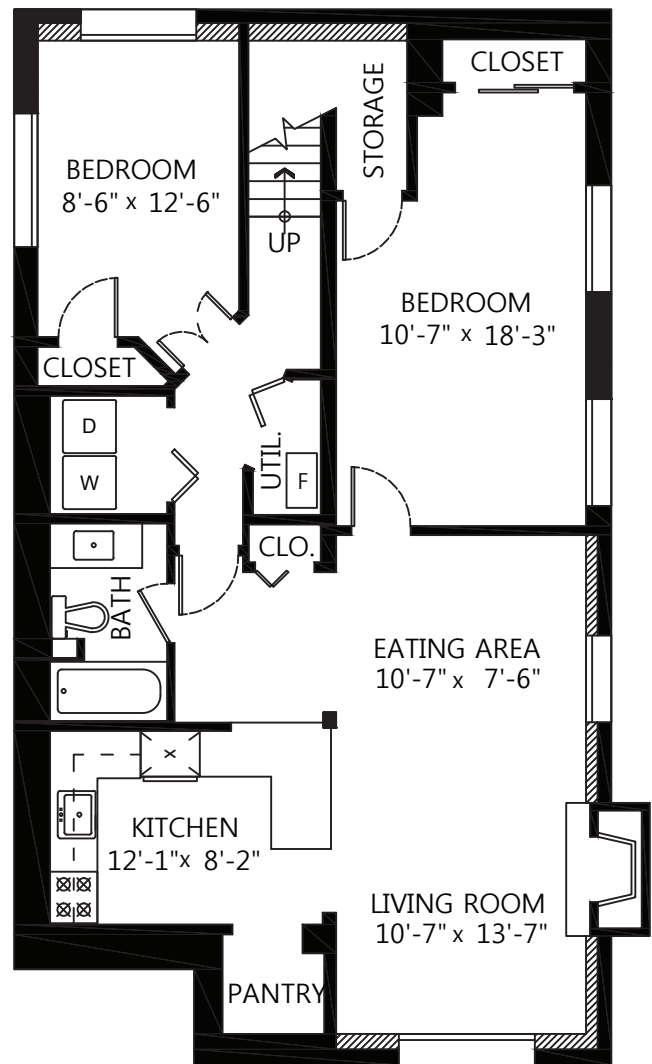
Total: 2,180 sq.ft.

Deck: 205 sq.ft.
Porch: 46 sq.ft.

MAIN FLOOR PLAN
Floor Area: 1,090 sq.ft.



LOWER FLOOR PLAN
Floor Area: 1,090 sq.ft.



The floor plan is not suitable for architectural/construction, square footage-method ANSI Z765 used & is covered under E&O

