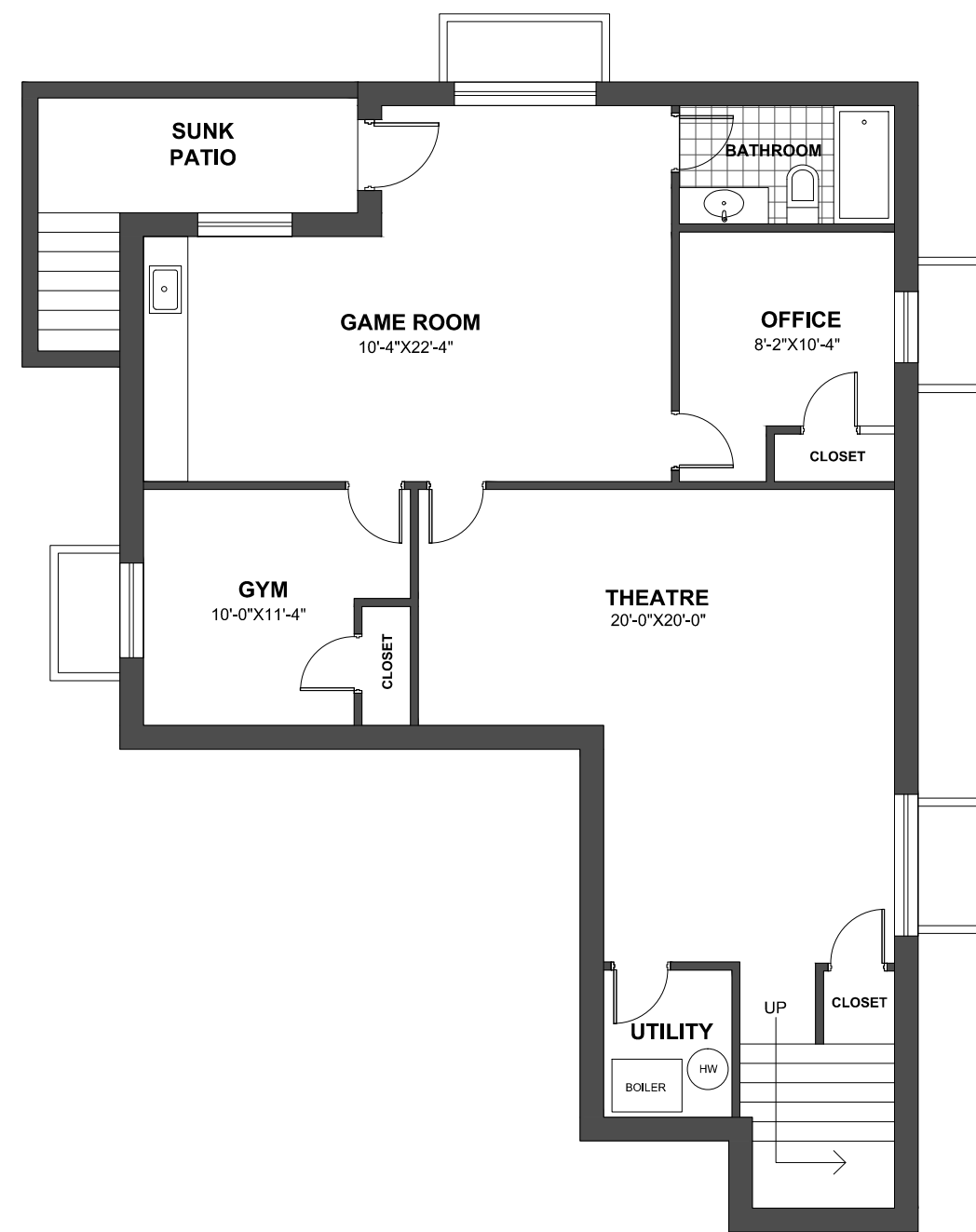


**3514 FORST AVE,
 COQUITLIM, BC**

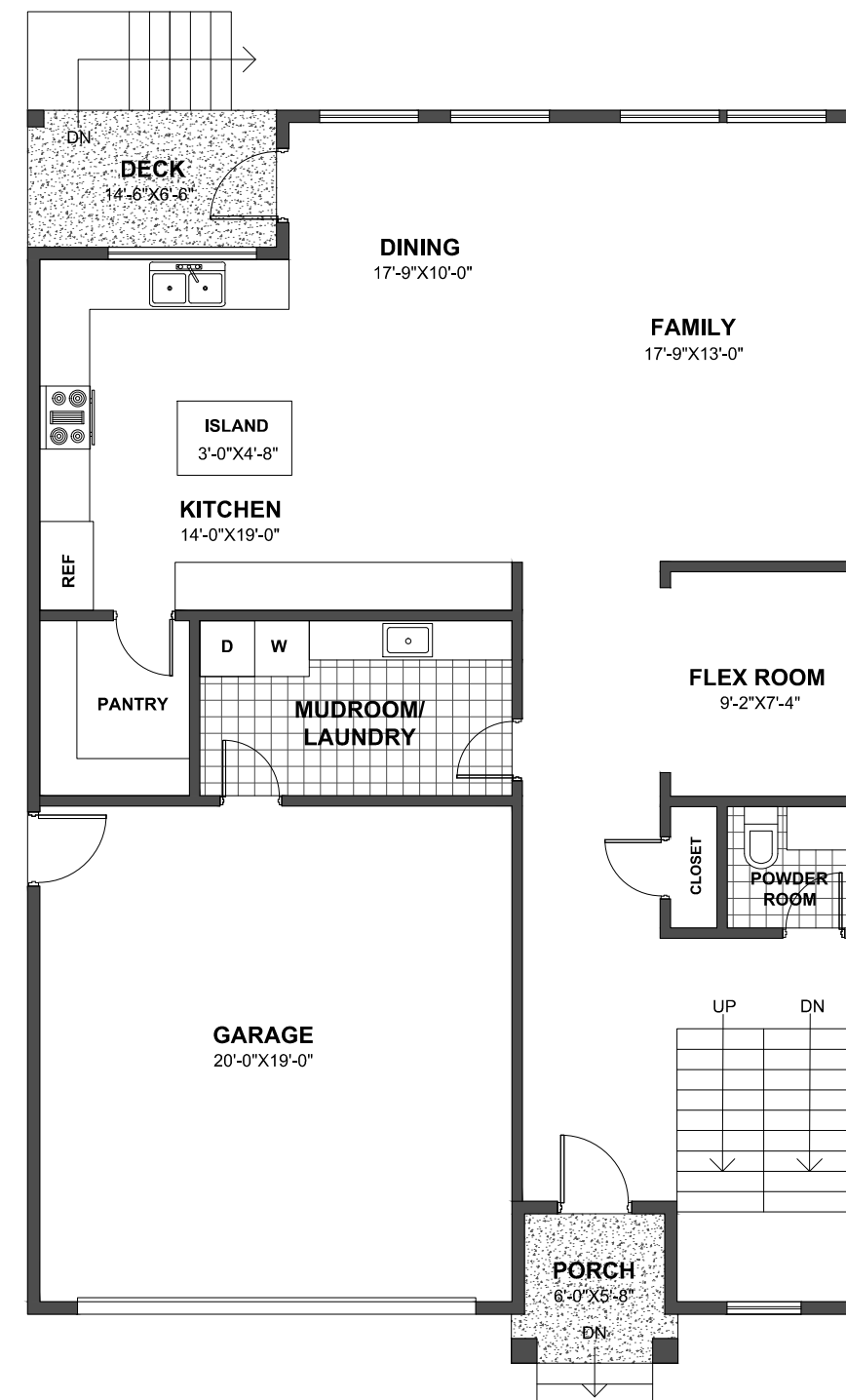
BASEMENT FLOOR: 1160 sq.ft.
 MAIN FLOOR: 1167 sq.ft.
 UPPER FLOOR: 1360 sq.ft.

TOTAL: 3687 sq.ft.



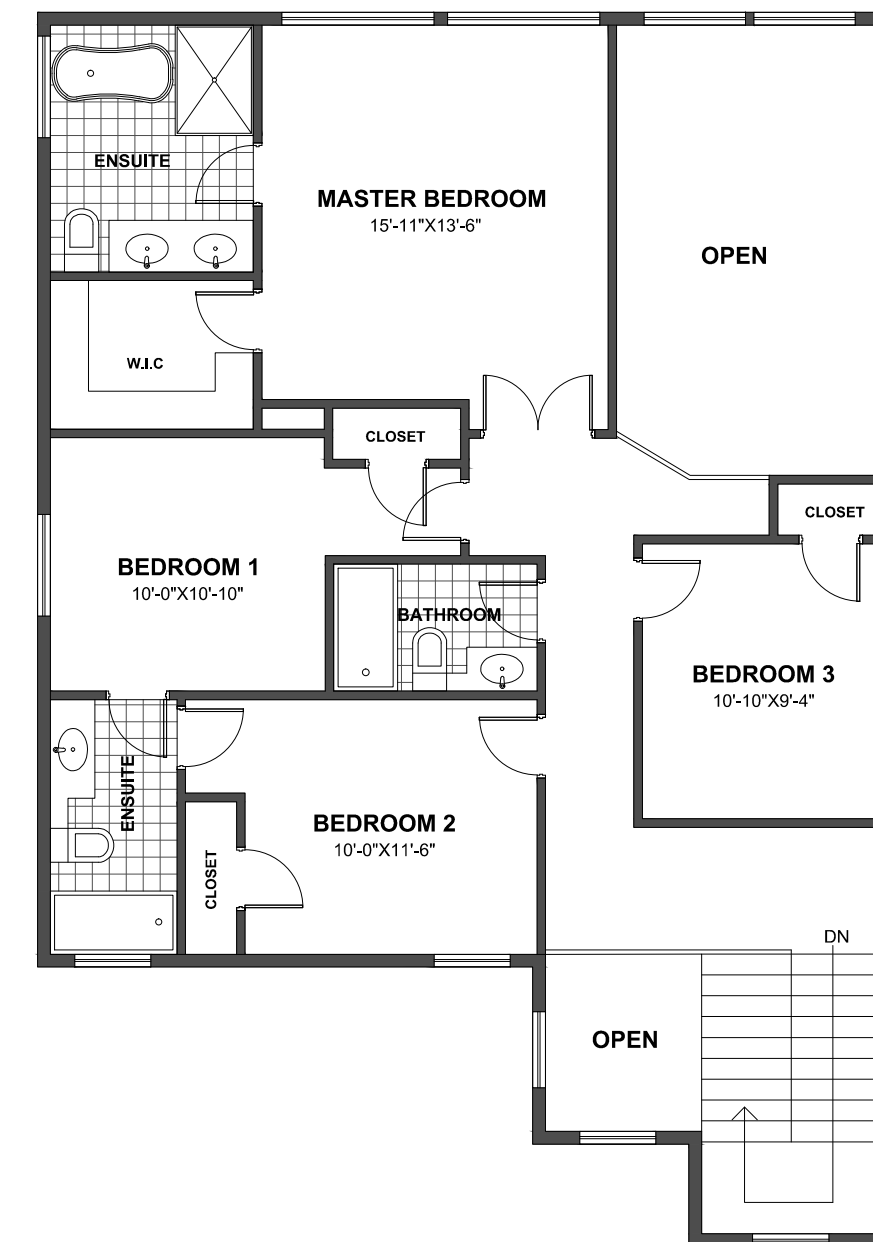
BASEMENT FLOOR PLAN

FLOOR AREA 1160 sq.ft



MAIN FLOOR PLAN

FLOOR AREA 1167 sq.ft



UPPER FLOOR PLAN

FLOOR AREA 1360 sq.ft