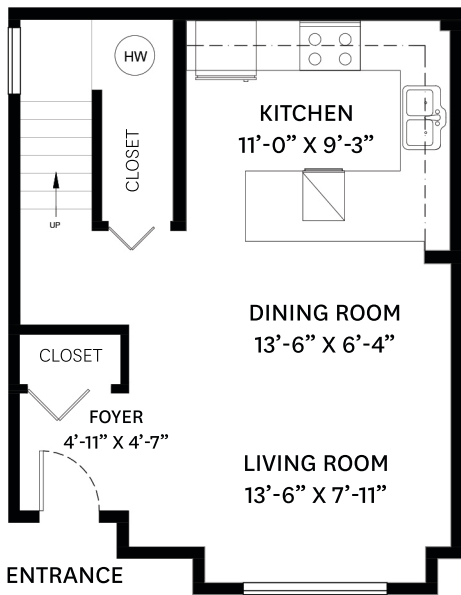
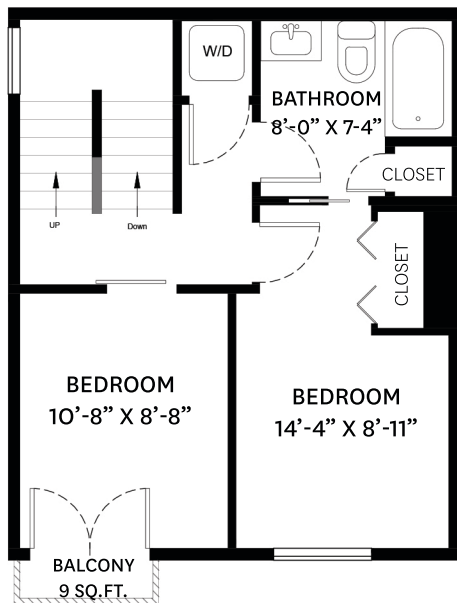


2763 GUELPH STREET, VANCOUVER, BC

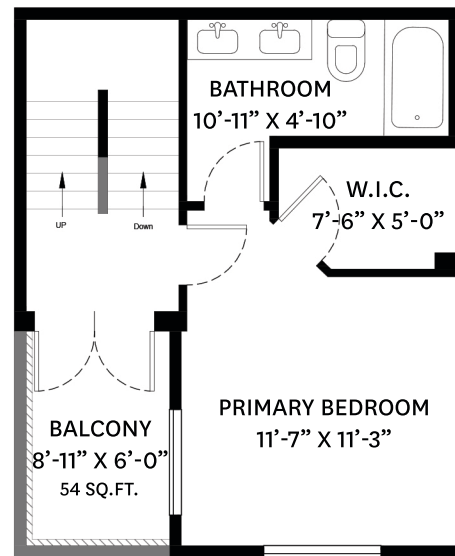
MAIN FLOOR TOTAL: 431 SQ. FT. **ROOF TOP:** 227 SQ. FT.
UPPER FLOOR TOTAL: 441 SQ. FT. **BALCONY TOTAL:** 63 SQ. FT.
TOP FLOOR TOTAL: 377 SQ. FT.
TOTAL: 1,249 SQ. FT.



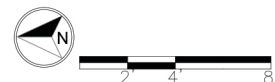
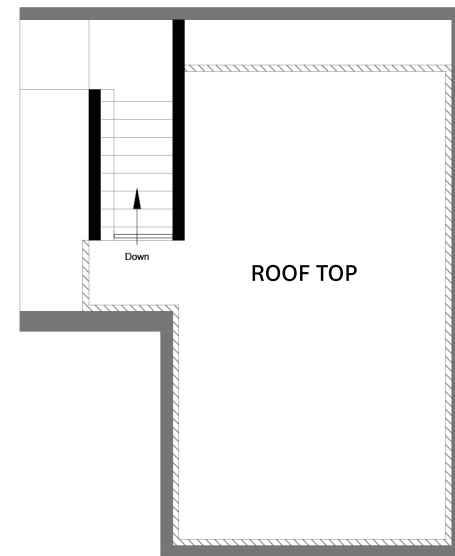
MAIN FLOOR PLAN
Ceiling Height: 8'-11"



UPPER FLOOR PLAN
Ceiling Height: 7'-11"



TOP FLOOR PLAN
Ceiling Height: 8'-0"



Adil Dinani PREC*
 604-771-3495
 adil@dinani.ca

floor plan designed by
 ishot.ca Enterprises Inc.
 604-368-7979
 http://ishot.ca