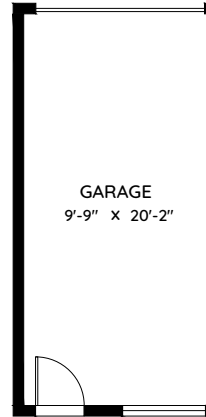


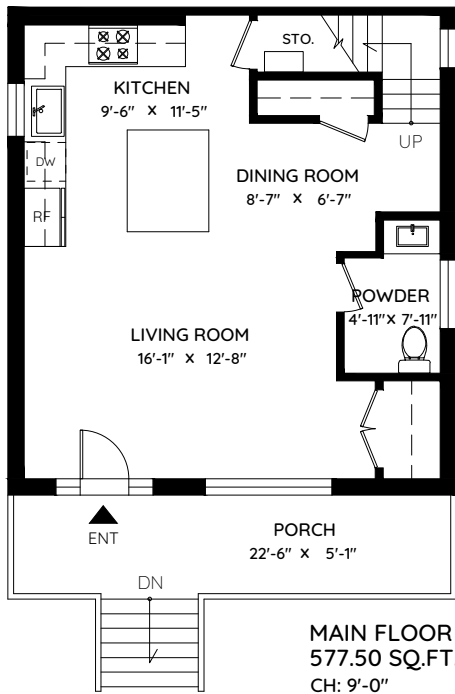
2723 TURNER STREET - FRONT UNIT

VANCOUVER, BC

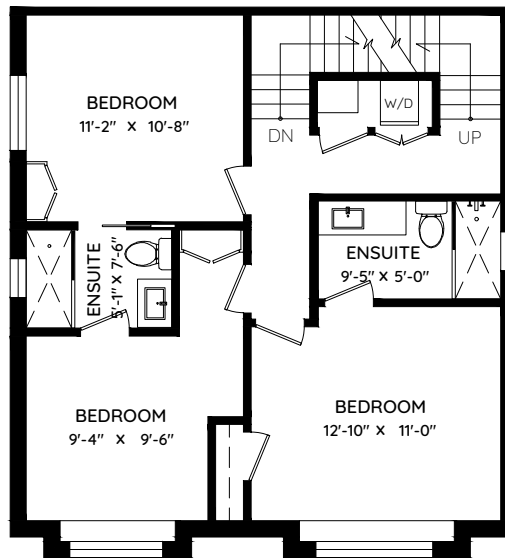
MAIN	577.50 SQ.FT.	GARAGE	223 SQ.FT.
MIDDLE	705.25 SQ.FT.	BALCONY	88 SQ.FT.
TOP	419.25 SQ.FT.	PORCH	150 SQ.FT.
SUITE	468.63 SQ.FT.		
TOTAL AREA	2170.63 SQ.FT.		



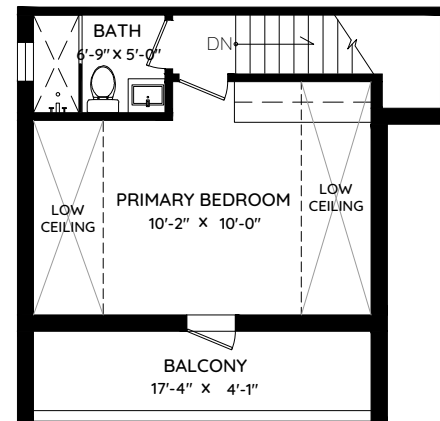
LEGAL SUITE



MAIN FLOOR
577.50 SQ.FT.
CH: 9'-0"

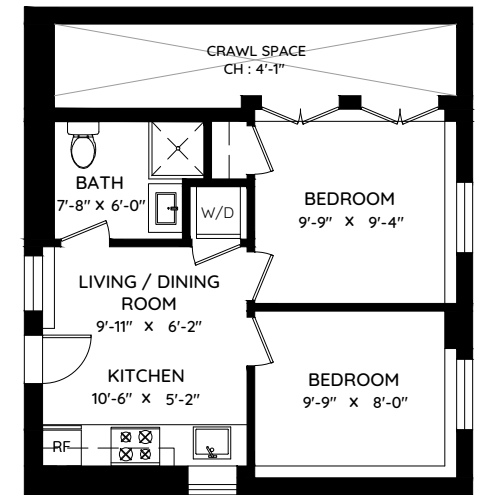


MIDDLE FLOOR
705.25 SQ.FT.
CH: 8'-0"



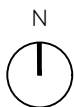
TOP FLOOR
419.25 SQ.FT.
VAULTED CH: 8'-1"

*Includes areas of lower ceiling height



SUITE
468.63 SQ.FT.
CH: 8'-0"

189.25 SQ.FT. OF UNHABITABLE AREA COUNTED IN COVERED AREA



0 ft 3 ft 5 ft

The total sq.ft. is given by the building plan.
The reader has been advised to seek legal advice in regards to covered area.
The floor plan and the measurements are approximate within +/- 2% and are to be used for advertising usage only.
May include unfinished area. Not suitable for architectural or construction. E&O Insured