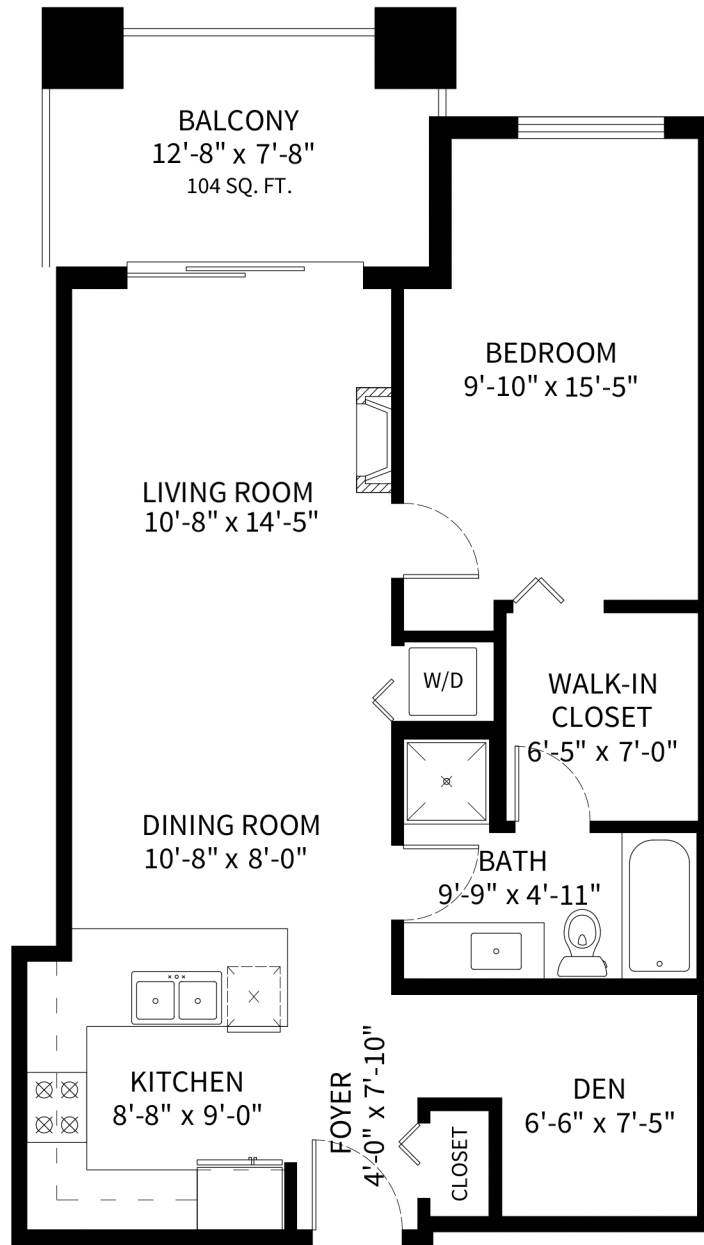


#201-2477 Kelly Avenue, Port Coquitlam BC



**FLOOR PLAN**  
Ceiling Height: 8'-11"

**Square Footage**  
Total Living Space: 772 SQ. FT.



**CONTACT**  
Adil Dinani  
604-771-3495  
adil@dinani.ca

floor plan designed by  
ishot.ca Enterprises Inc.  
604-299-9688  
<http://ishot.ca>