

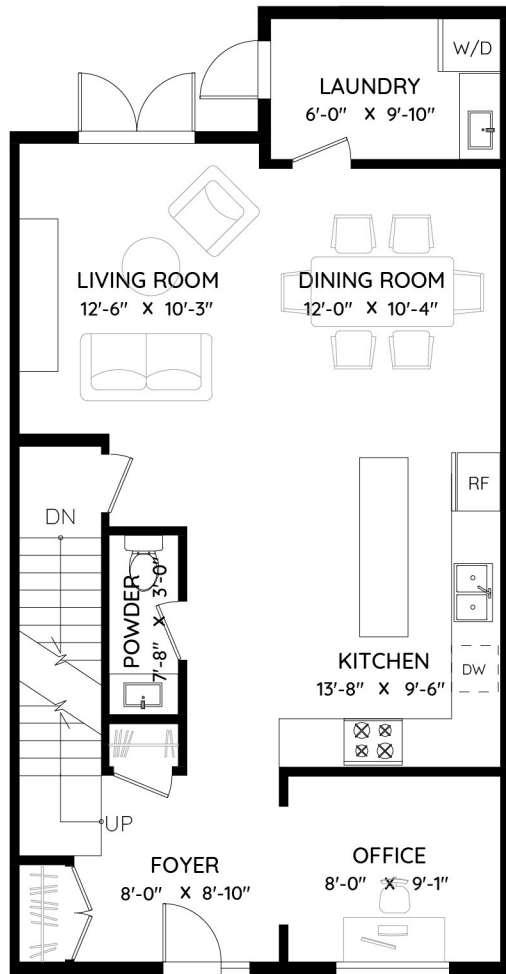
4 - 6176 ELGIN AVENUE

BURNABY, BC

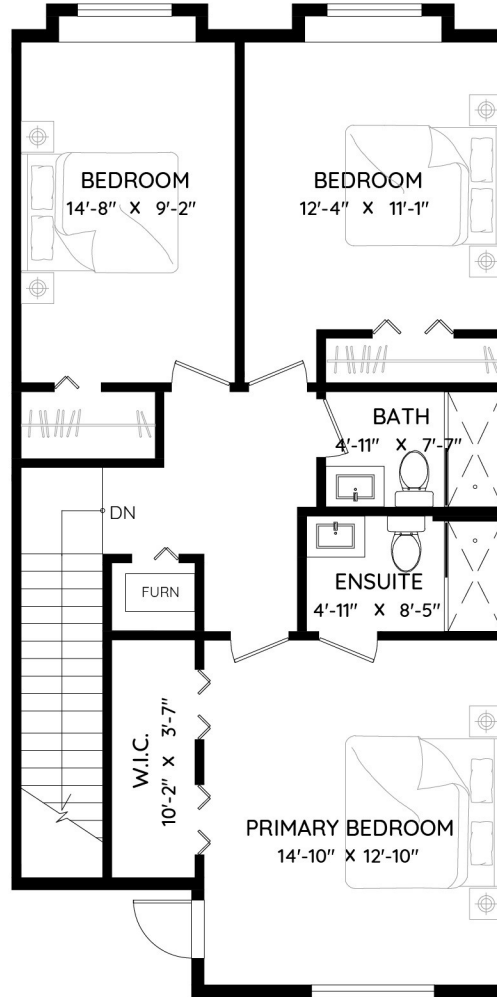
MAIN	842 SQ.FT.
UPPER	864 SQ.FT.
LOWER	605 SQ.FT.
TOTAL	2,311 SQ.FT.
GARAGE	236 SQ.FT.



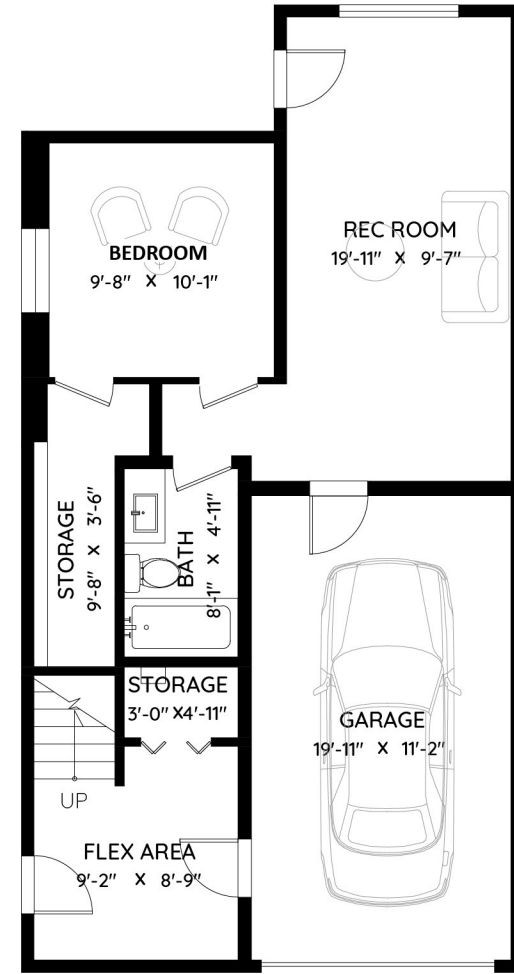
DORIS GEE & PHIL MOORE
REAL ESTATE TEAM



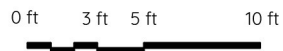
MAIN FLOOR
842 SQ.FT.
CH: 9'-0"



UPPER FLOOR
864 SQ.FT.
CH: 8'-0"



LOWER FLOOR
605 SQ.FT.
CH: 8'-0"



The floor plan and measurements are approximate, typically within +/- 2%. These are intended strictly for advertising purposes. They may encompass unfinished areas and are not intended for architectural or construction applications. There may be variances in the numbers if there were restrictions on property access or if taking precise measurements at the time of measuring isn't feasible. E&O insured.

