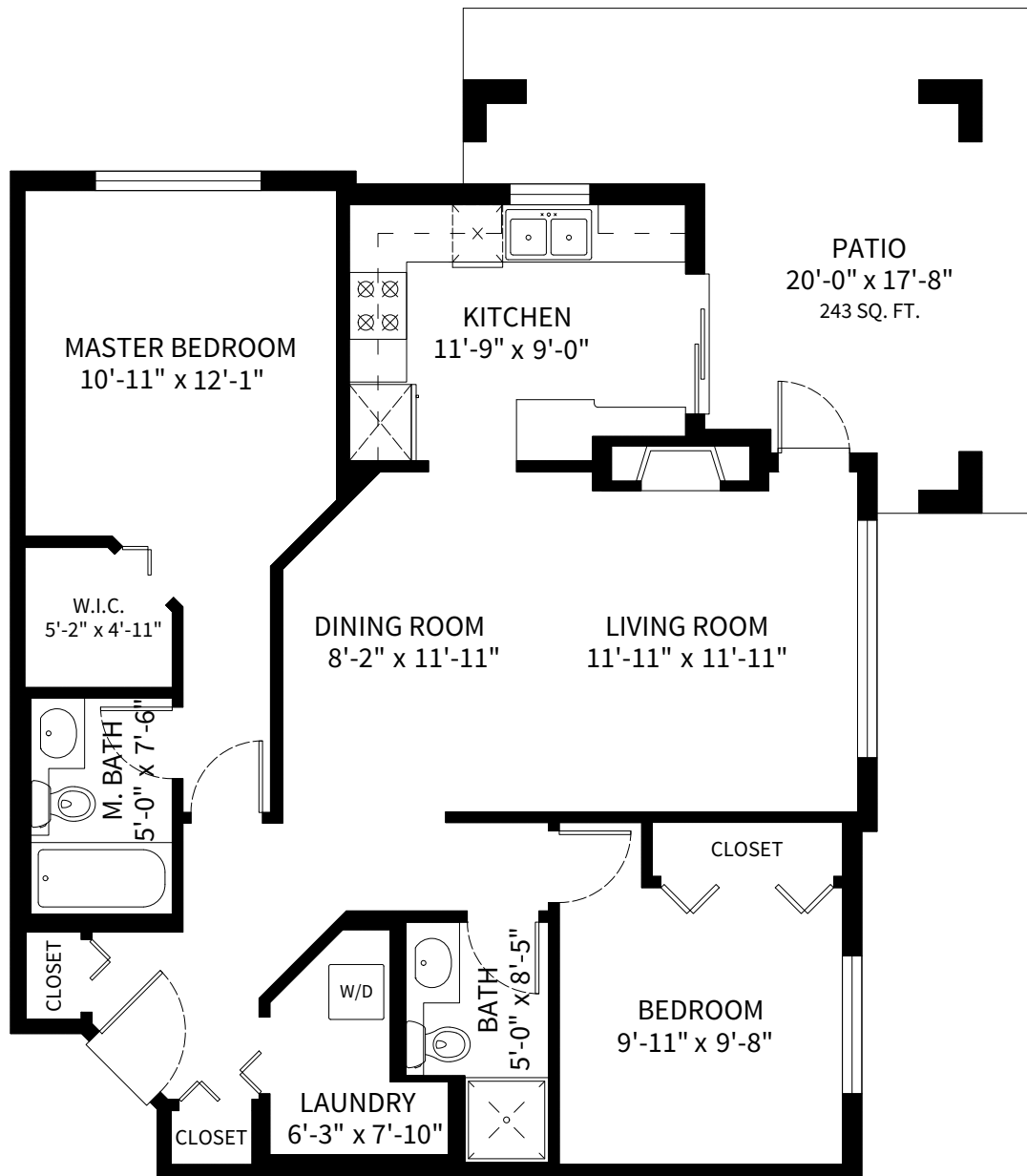


#104-2551 Parkview Lane, Port Coquitlam BC



FLOOR PLAN

Square Footage

Total Living Space: 971 SQ. FT.

0 1' 2' 4' 8'



CONTACT

Adil Dinani
604-771-3495
adil@dinani.ca

floor plan designed by
ishot.ca Enterprises Inc.
604-299-9688
<http://ishot.ca>