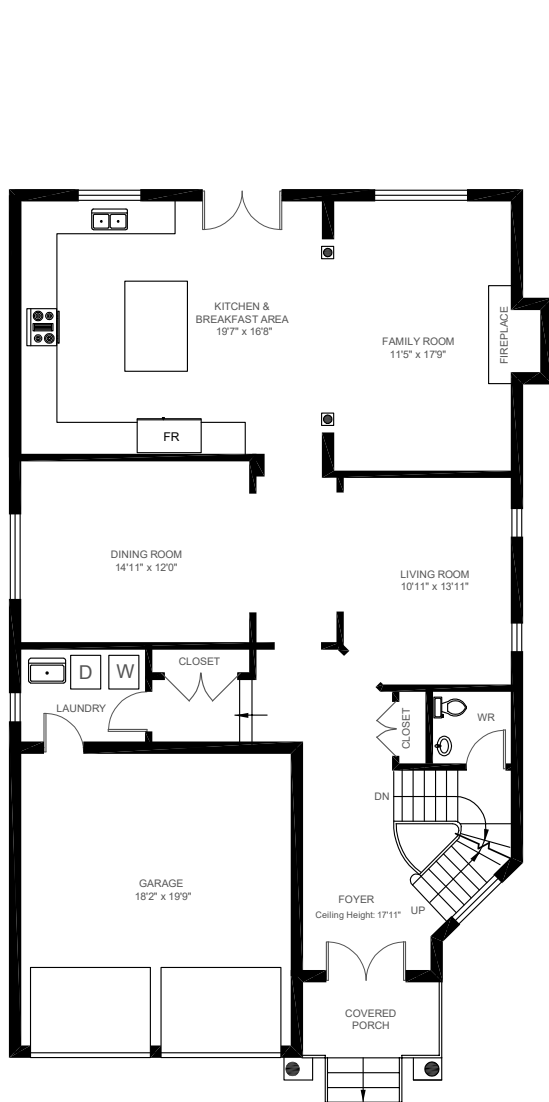


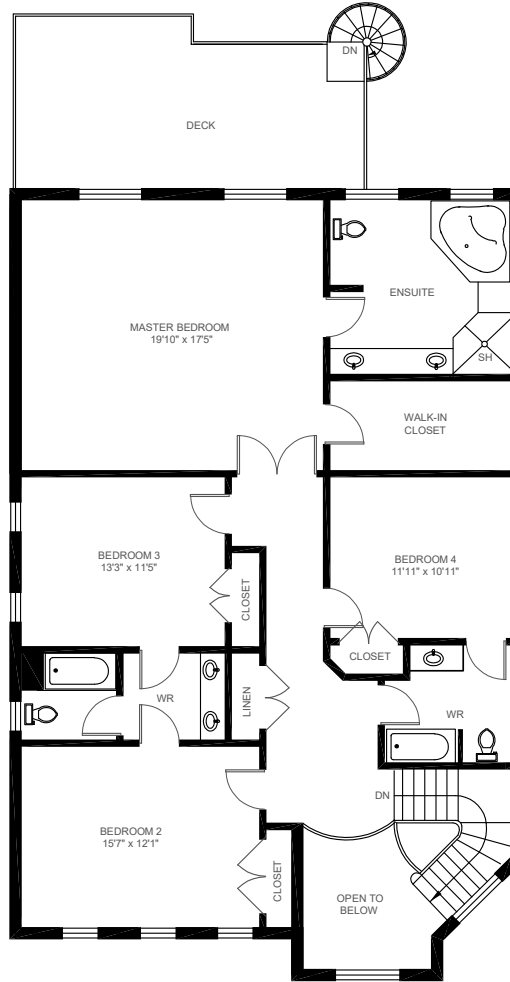


# 2419 Sylvia Dr, Oakville

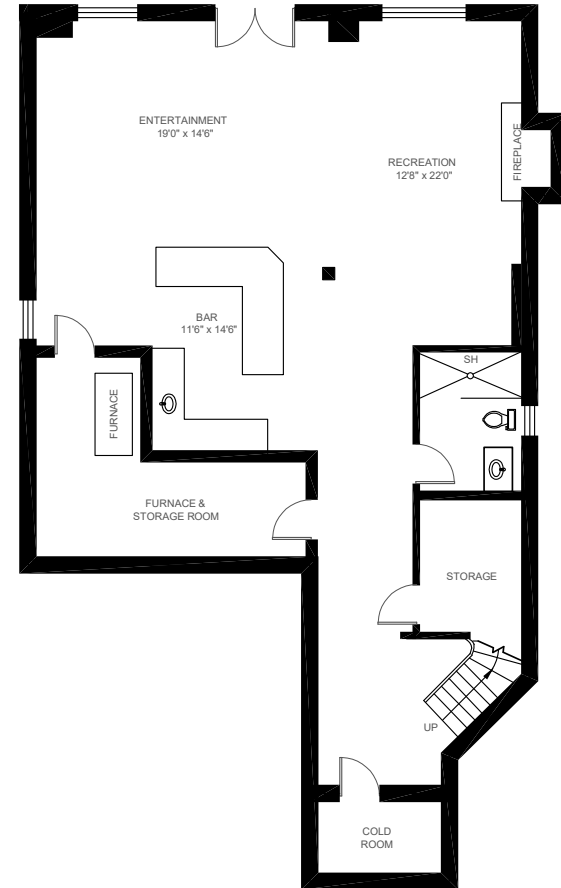
Gross Floor Area Above Grade (GFA): 3180 sq.ft



MAIN FLOOR ( 1474 sq.ft.)  
Ceiling Height: 9'



SECOND FLOOR ( 1706 sq.ft.)  
Ceiling Height: 8'



LOWER FLOOR ( 1532 sq.ft.)  
Ceiling Height: 8'10"

This floor plan is provided for illustrative purposes only. Buyer to verify measurements.

PREPARED FOR: Elite3 & Team | Real One Realty Inc., Brokerage | Tel: 905-281-2888 | Fax: 905-281-2880