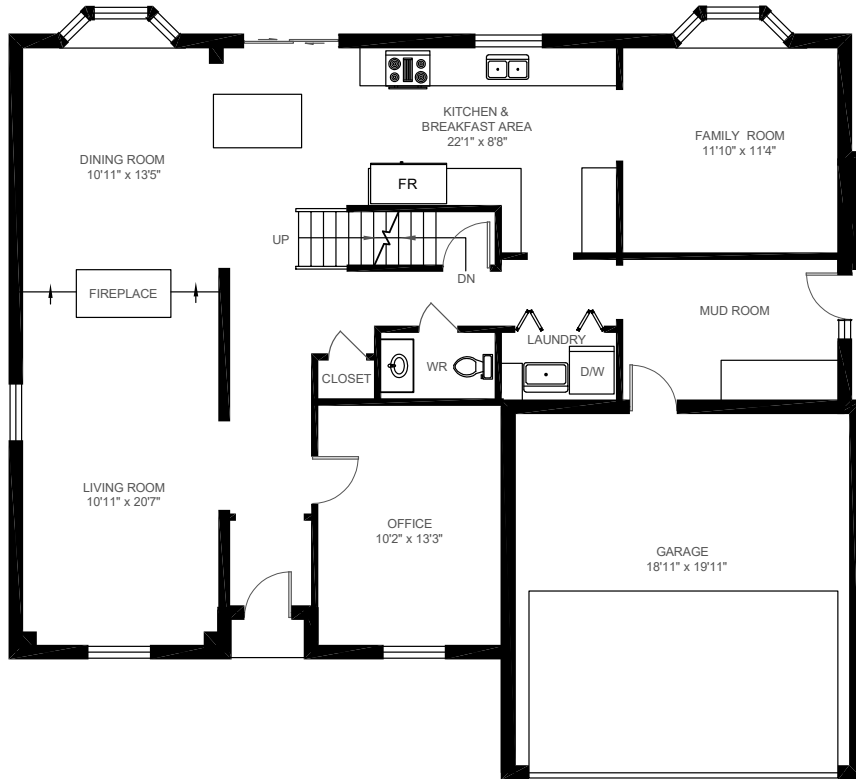


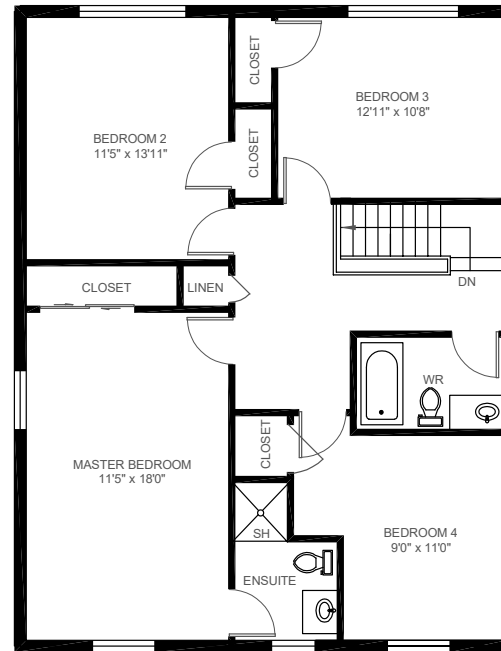


476 Dorland Road, Oakville

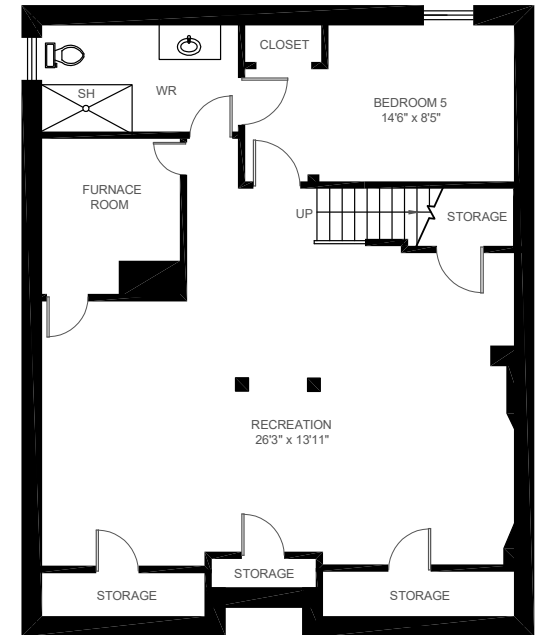
Gross Floor Area Above Grade (GFA): 2304 sq.ft



MAIN FLOOR (1332 sq.ft.)
Ceiling Height: 8'



SECOND FLOOR (972 sq.ft.)
Ceiling Height: 7'6"



LOWER FLOOR (906 sq.ft.)
Ceiling Height: 7'3"