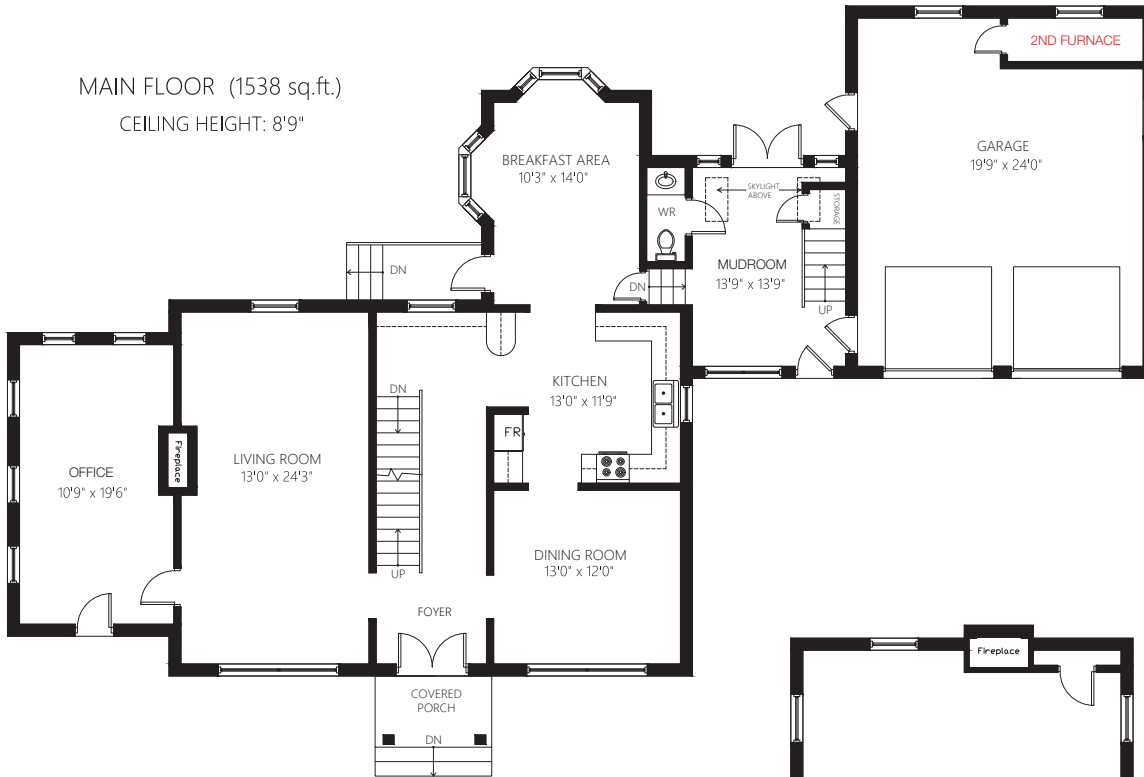
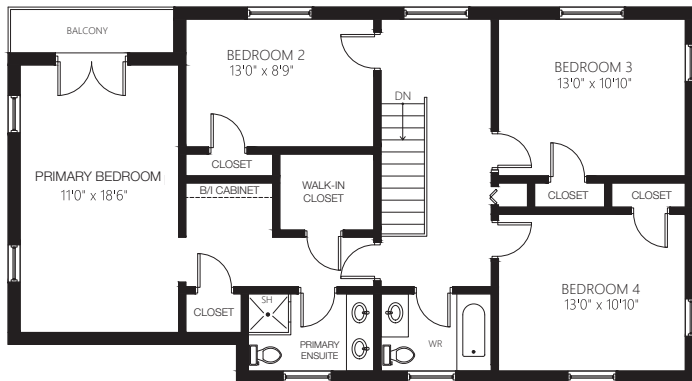




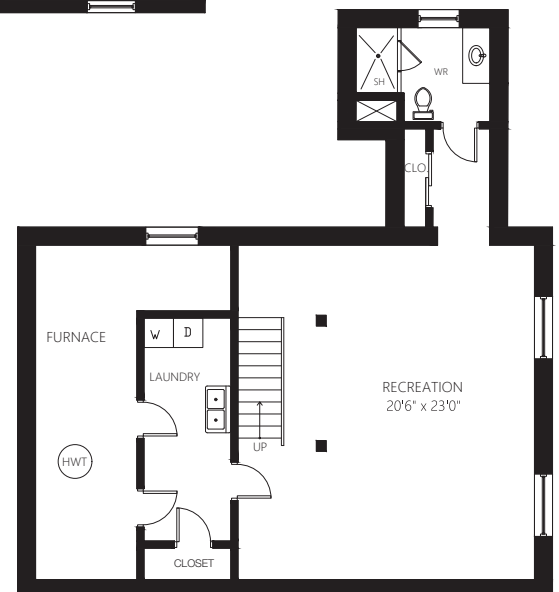
MAIN FLOOR (1538 sq.ft.)
CEILING HEIGHT: 8'9"



SECOND FLOOR (1151 sq.ft.)
CEILING HEIGHT: 8'3"



BASEMENT (1112 sq.ft.)
CEILING HEIGHT: 6'9"



SECOND FLOOR (678 sq.ft.)
(LOFT ABOVE GARAGE)
CEILING HEIGHT: 7'10"

