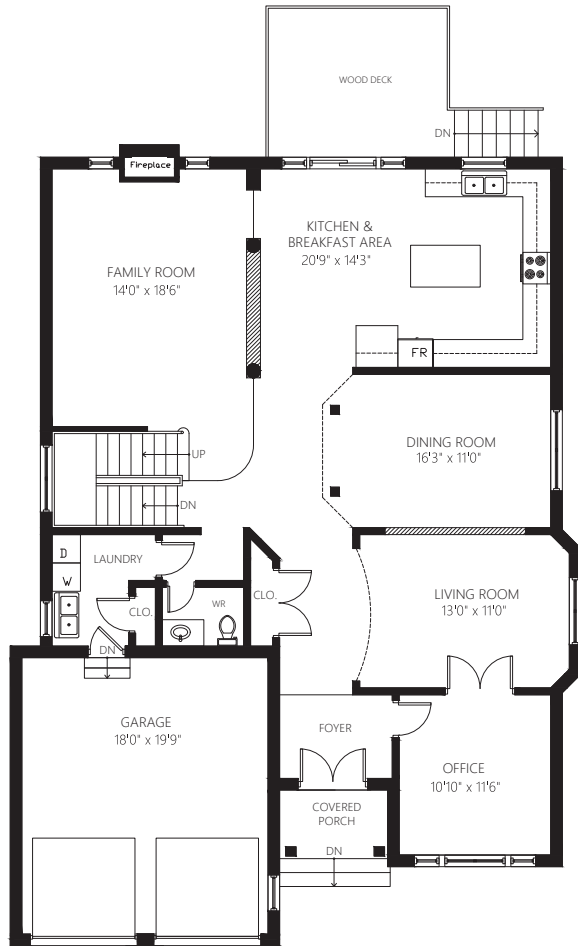


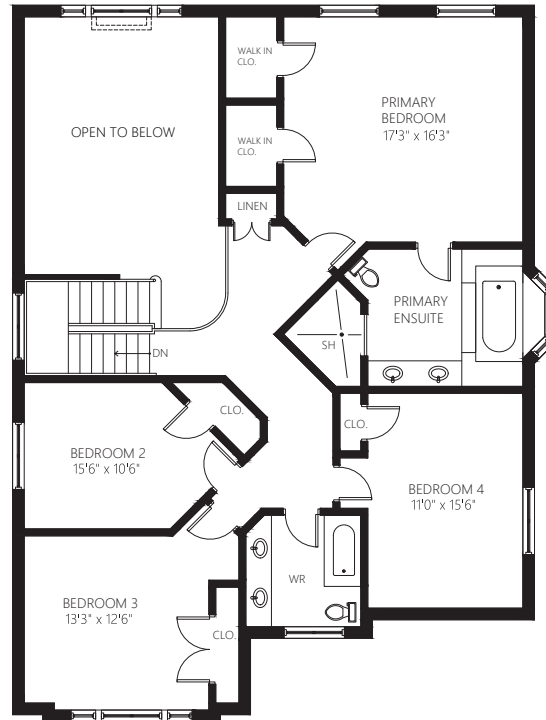


2455 Bon Echo Dr, Oakville

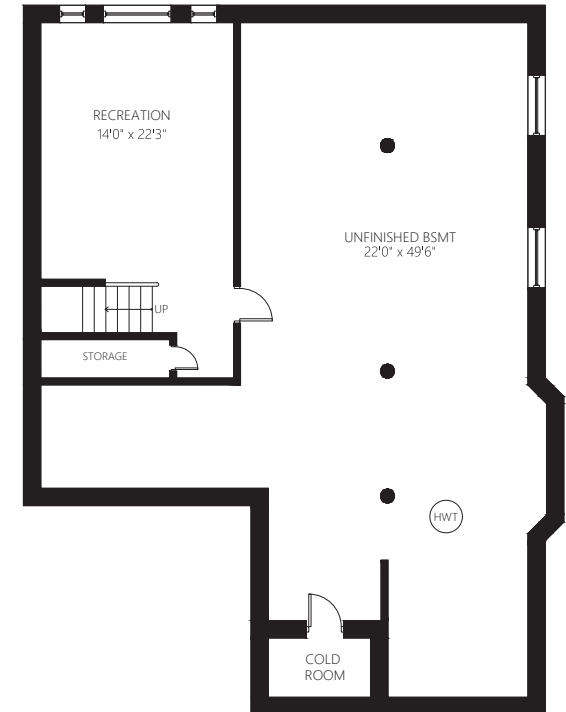
Gross Floor Area Above Grade (GFA): 3316 sq.ft



MAIN FLOOR (1582 sq.ft.)
CEILING HEIGHT: 9'



SECOND FLOOR (1734 sq.ft.)
CEILING HEIGHT: 8'



BASEMENT (1652 sq.ft.)
CEILING HEIGHT: 8'3"

This floor plan is provided for illustrative purposes only. Buyer to verify measurements.
PREPARED FOR: Elite3 & Team | Real One Realty Inc., Brokerage | Tel: 905-281-2888 | Fax: 905-281-2880