

2237 Dunedin Rd., Oakville

Gross Floor Area Above Grade (GFA): 2,008 Sq.ft

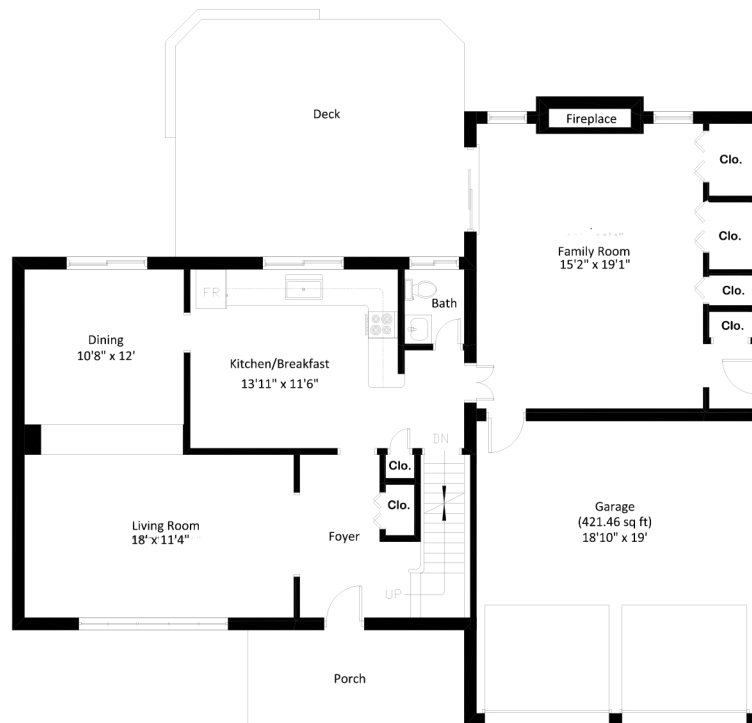


Total (Main Floor + Second Floor): 2008.62 sq ft



CEILING HEIGHT: 7'5"

BASEMENT (781.25 sq ft)



CEILING HEIGHT: 8'

MAIN FLOOR (1195.27 sq ft)



CEILING HEIGHT: 7'6"

SECOND FLOOR (813.35 sq ft)

THIS FLOOR PLAN IS PROVIDED FOR ILLUSTRATIVE PURPOSES ONLY. BUYER TO VERIFY MEASUREMENTS.

This floor plan is provided for illustrative purposes only. Buyer to verify measurements.

PREPARED FOR: Elite3 & Team | Real One Realty Inc., Brokerage | Tel: 905-281-2888 | Fax: 905-281-2880