

262.01 (P1 & Mens.)

P.I. No. 25063-1636 (LT)

PART

P.I. No. 25063-1750 (LT)

BLOCK 113  
(0.30 RESERVE)

P.I. No. 25063-1751 (LT)

BLOCK 114  
(0.30 RESERVE)  
SEE DETAIL

# CRAIGLEITH ROAD

PRESQUILLE DRIVE  
(BY REGISTERED PLAN 20M-859)  
PLAN 20M-859

BLOCK 115  
(0.30 RESERVE)  
P.I. No. 25063-1751 (LT)

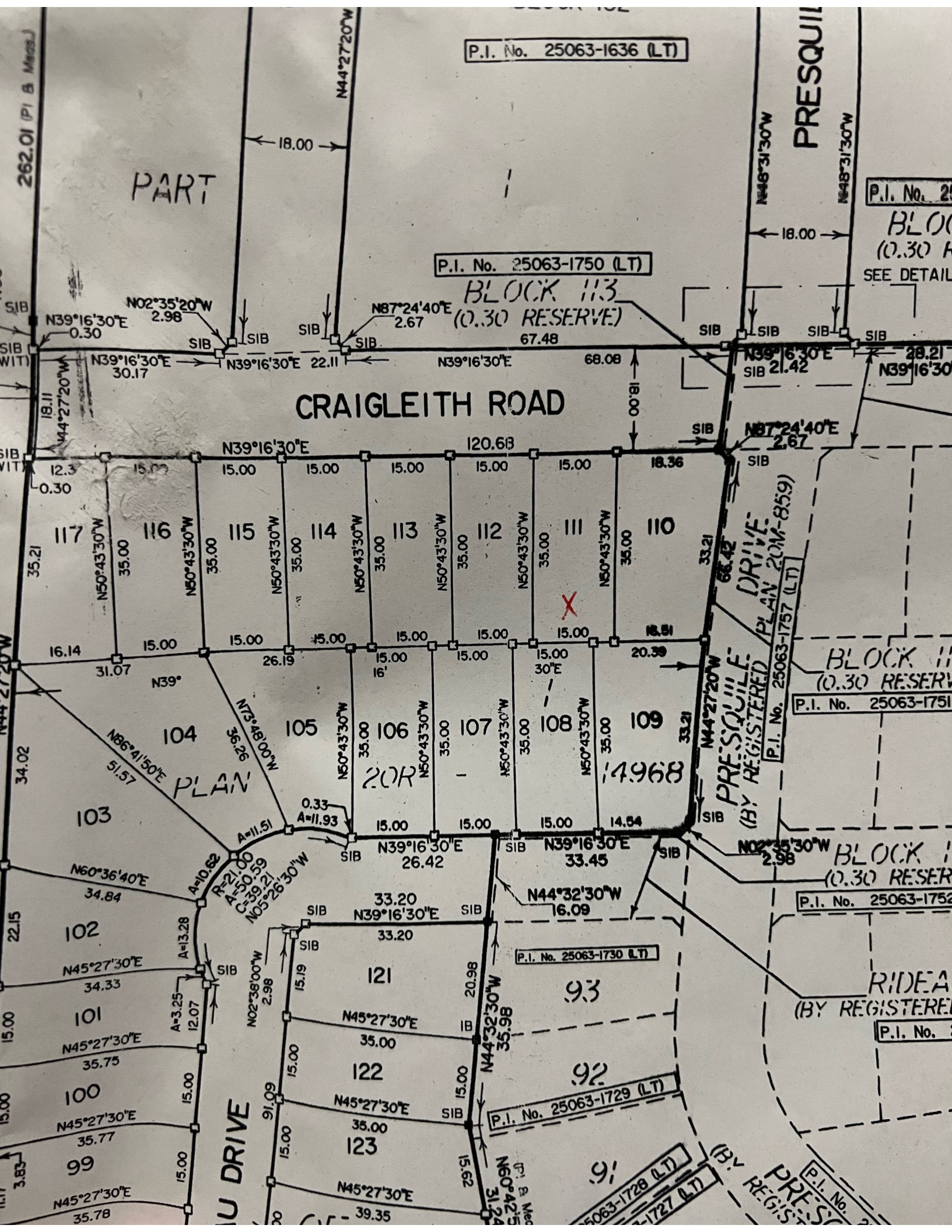
BLOCK 116  
(0.30 RESERVE)  
P.I. No. 25063-1752 (LT)

RIDEA DRIVE  
(BY REGISTERED PLAN 20M-859)  
P.I. No. 25063-1753 (LT)

P.I. No. 25063-1730 (LT)

P.I. No. 25063-1729 (LT)

P.I. No. 25063-1728 (LT)  
P.I. No. 25063-1727 (LT)



PLAN

20R

14968

93

92

91

U DRIVE