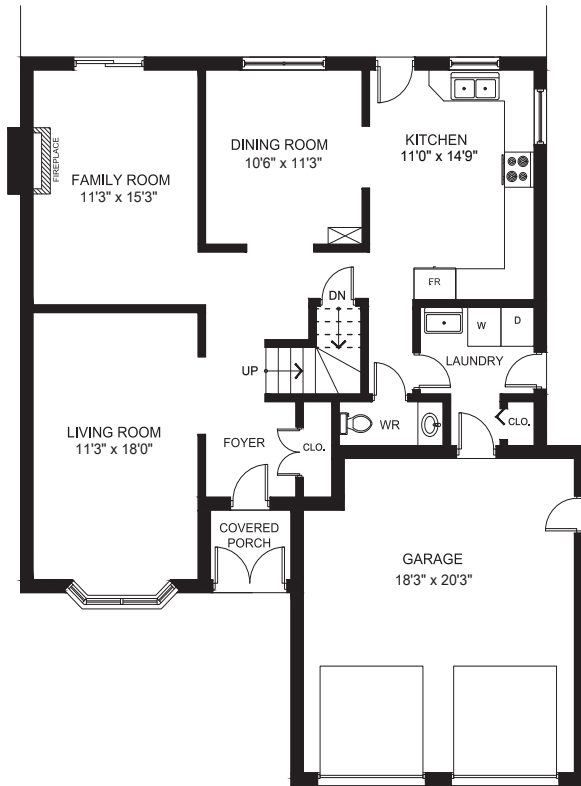


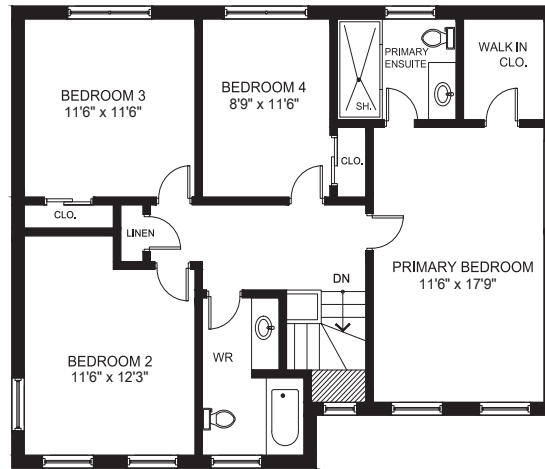


3031 Kilbride Crt., Mississauga

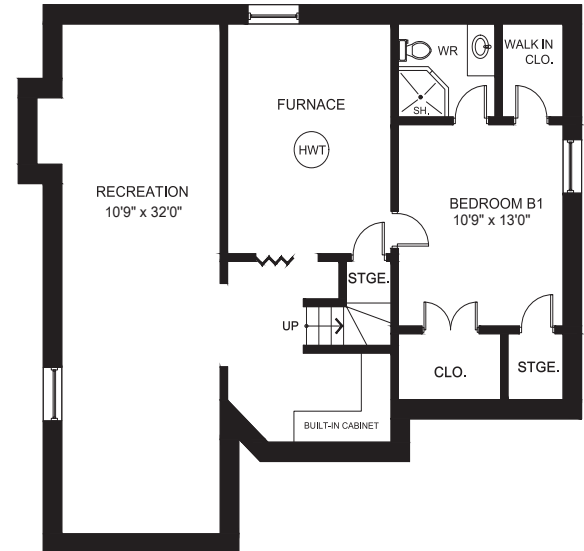
Gross Floor Area Above-Grade (GFA): 1,982 Sq.Ft.



MAIN FLOOR (1022 sq.ft.)
CEILING HEIGHT: 8'



SECOND FLOOR (960 sq.ft.)
CEILING HEIGHT: 7'6"



BASEMENT (1022 sq.ft.)
CEILING HEIGHT: 7'0"

This floor plan is provided for illustrative purposes only. Buyer to verify measurements.

PREPARED FOR: Elite3 & Team | Real One Realty Inc., Brokerage | Tel: 905-281-2888 | Fax: 905-281-2880