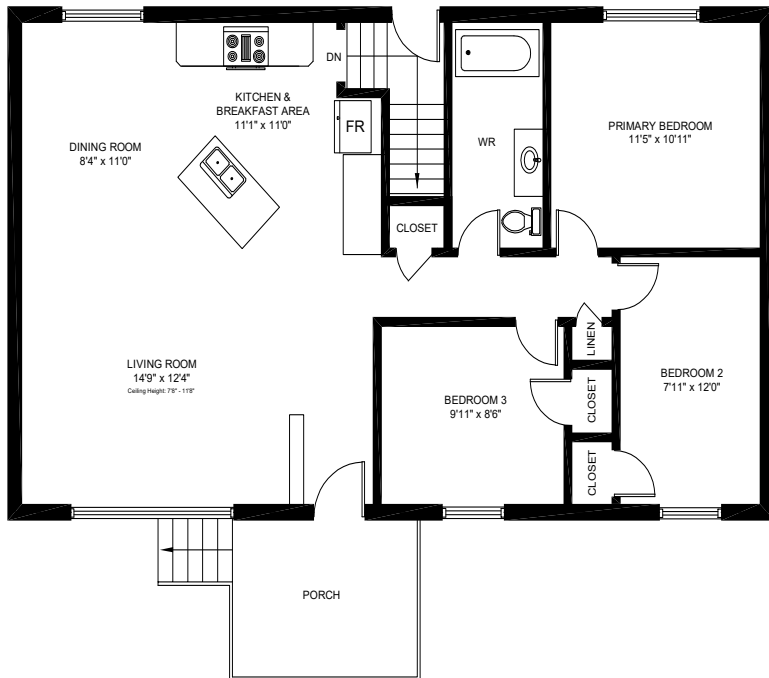


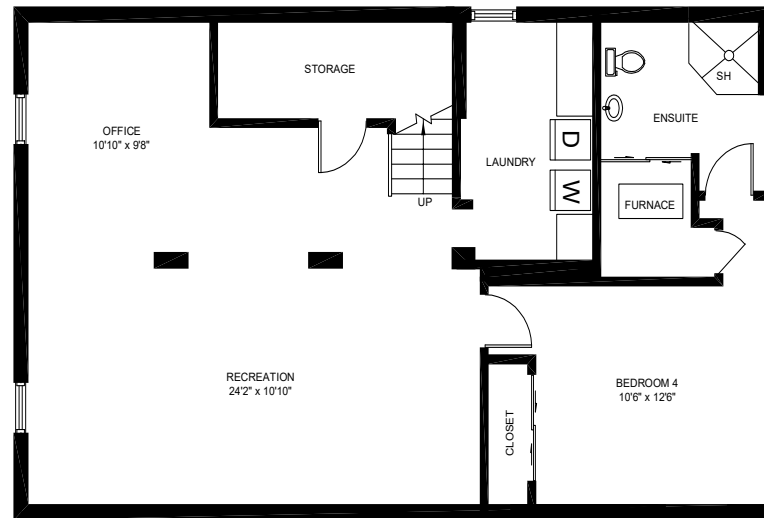


5452 Croydon Rd., Burlington

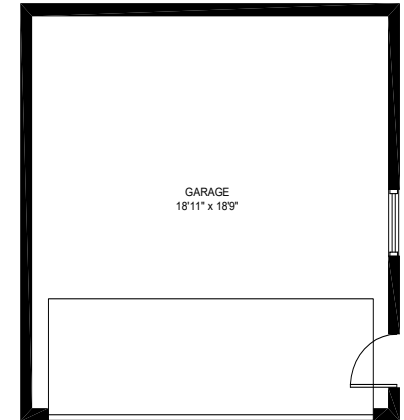
Gross Floor Area Above-Grade (GFA): 1,050 Sq.Ft.



MAIN FLOOR (1,050 sq.ft.)
Ceiling Height: 8'



LOWER FLOOR (1,050 sq.ft.)
Ceiling Height: 7'2"



GARAGE (420 sq.ft.)

** This floor plan is provided for illustrative purposes only. Buyer to verify measurements. **

PREPARED FOR: Elite3 & Team | Real One Realty Inc., Brokerage | Tel: 905-281-2888 | Fax: 905-281-2880