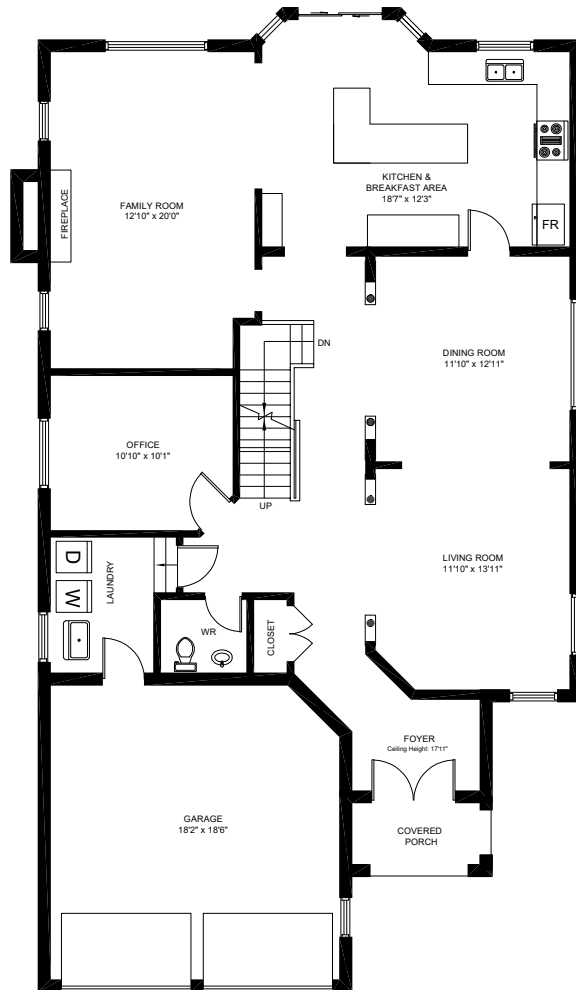
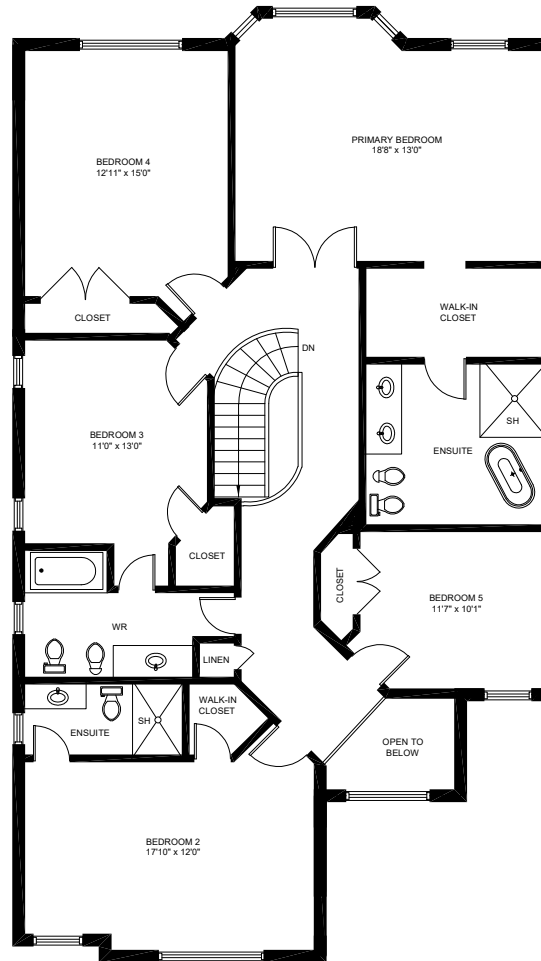


2405 Hertfordshire Way, Oakville

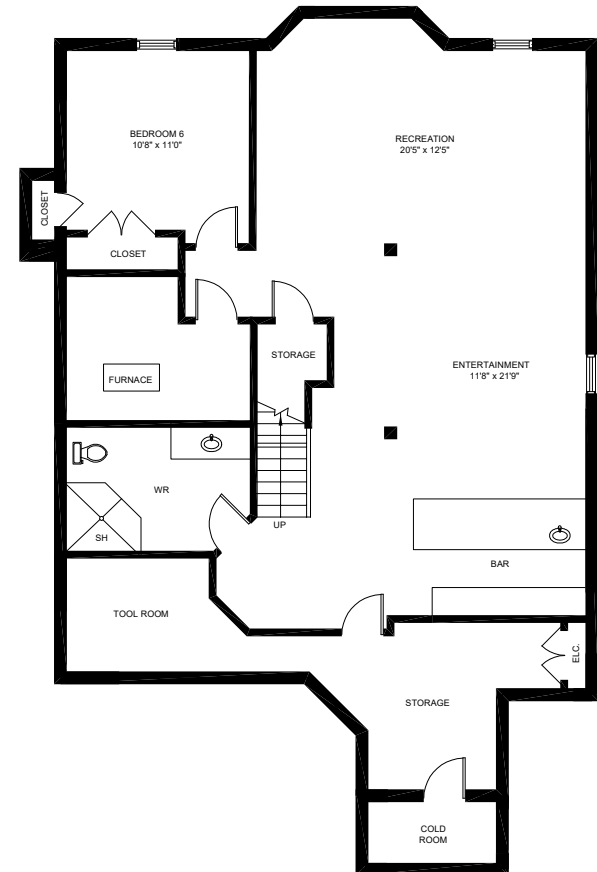
Gross Floor Area Above-Grade (GFA): 3,233 Sq.Ft.



MAIN FLOOR (1,468 sq.ft.)
Ceiling Height: 9'



SECOND FLOOR (1,765 sq.ft.)
Ceiling Height: 8'



LOWER FLOOR (1,508 sq.ft.)
Ceiling Height: 7'7"

** This floor plan is provided for illustrative purposes only. Buyer to verify measurements. **

PREPARED FOR: Elite3 & Team | Real One Realty Inc., Brokerage | Tel: 905-281-2888 | Fax: 905-281-2880