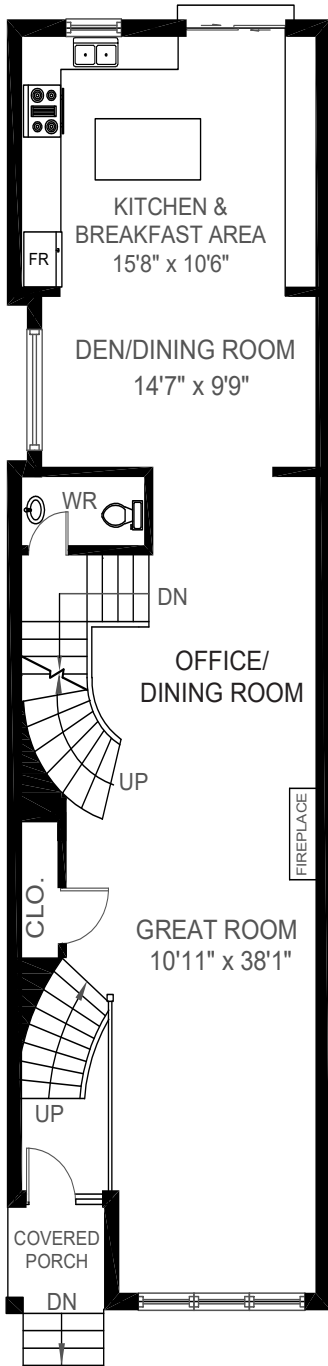


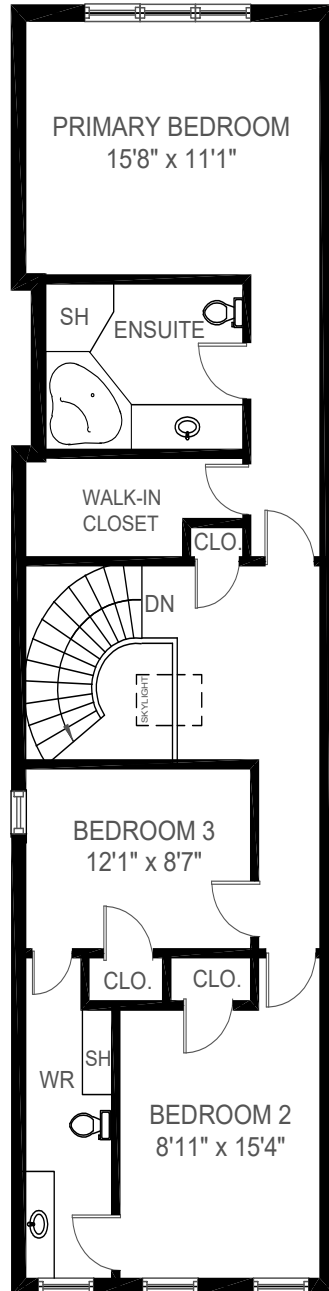


# 115 Preston Meadows Ave., Mississauga

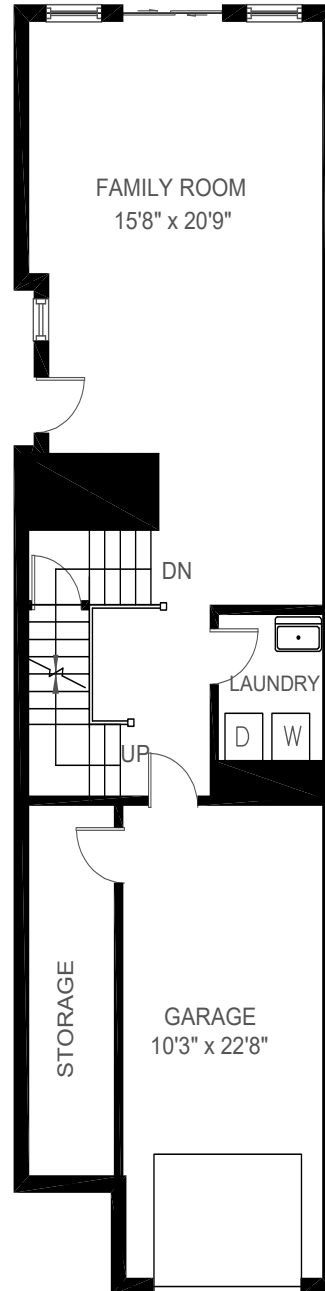
Gross Floor Area Above-Grade (GFA): 2,639 Sq.Ft



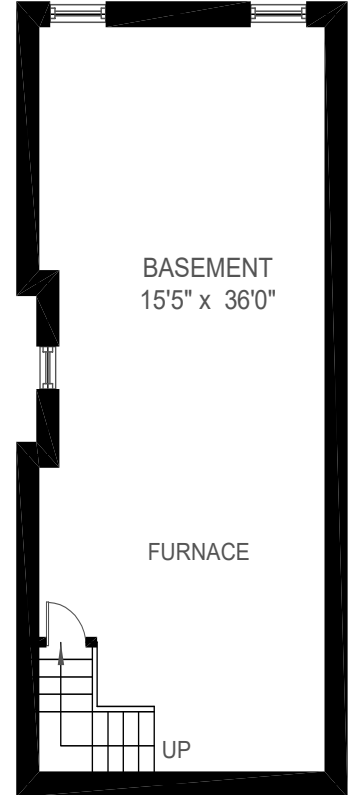
MAIN FLOOR (991 sq.ft.)



SECOND FLOOR (1,020 sq.ft.)



LOWER FLOOR (628 sq.ft.)



BASEMENT (628 sq.ft.)

This floor plan is provided for illustrative purposes only. Buyer to verify measurements.

PREPARED FOR: Elite3 & Team | Real One Realty Inc., Brokerage | Tel: 905-281-2888 | Fax: 905-281-2880