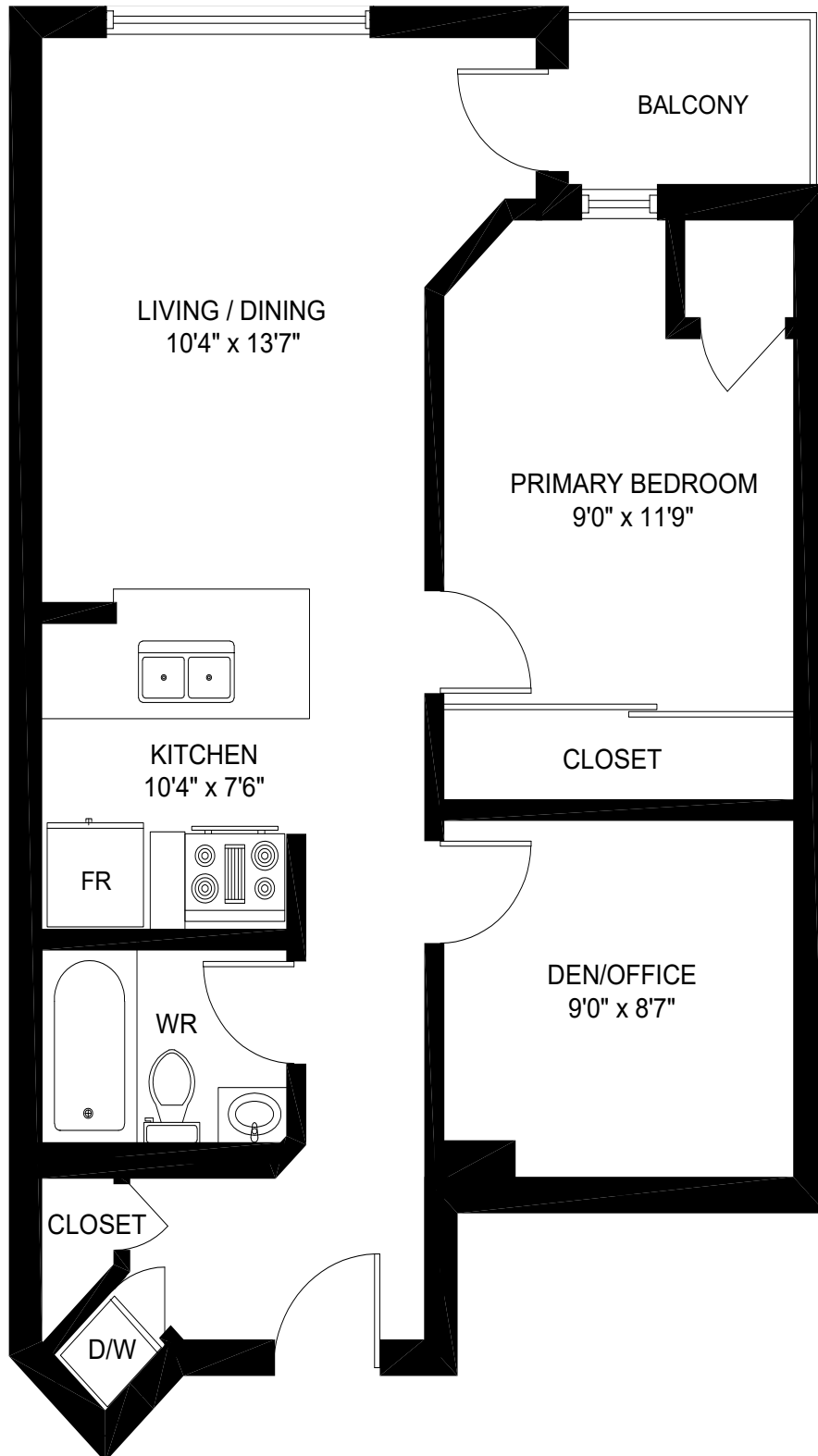




903 - 100 Hayden St., Toronto

Gross Floor Area Above-Grade (GFA): 665 Sq.Ft



Ceiling Height: 8'

This floor plan is provided for illustrative purposes only. Buyer to verify measurements.

PREPARED FOR: Elite3 & Team | Real One Realty Inc., Brokerage | Tel: 905-281-2888 | Fax: 905-281-2880