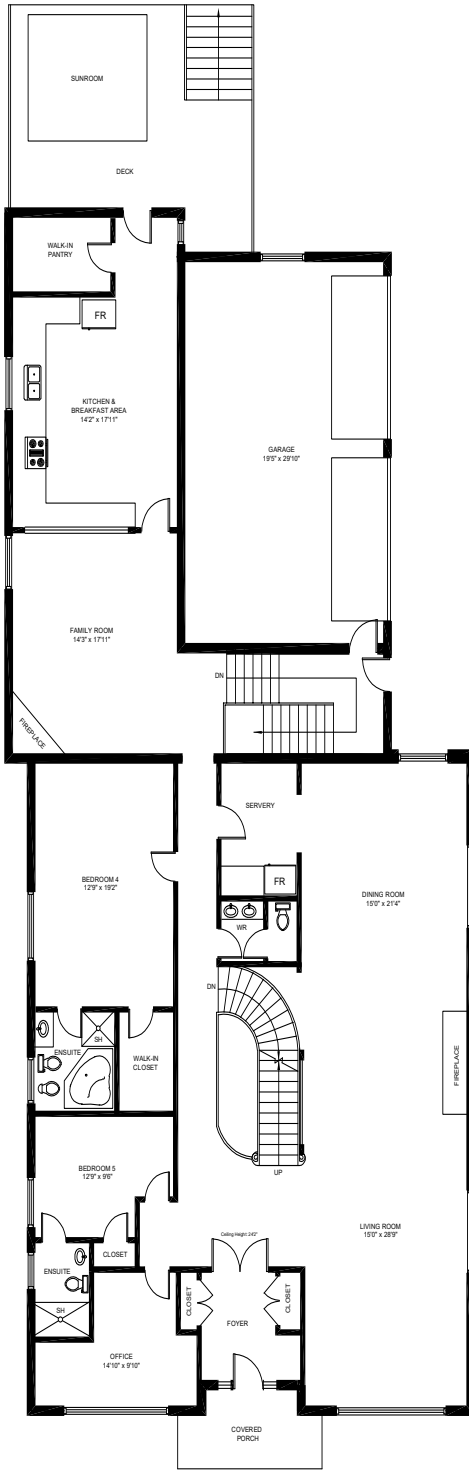


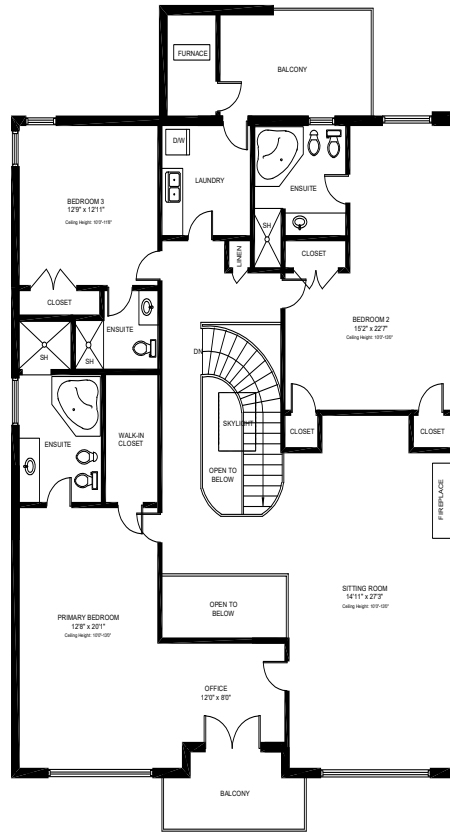


3480 Joan Dr., Mississauga

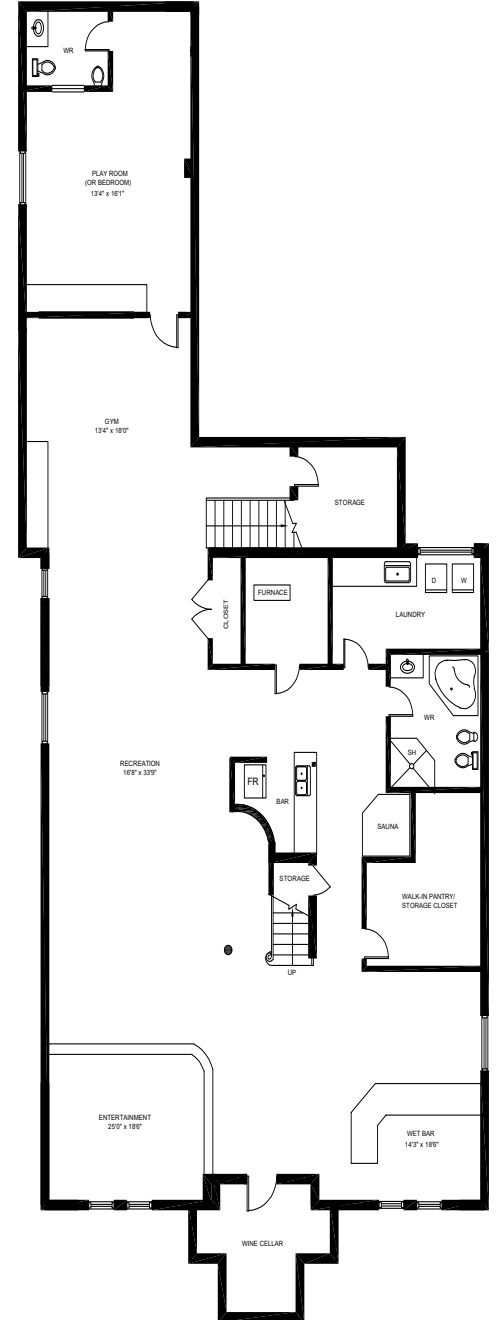
Gross Floor Area Above-Grade (GFA): 5,210 Sq.Ft



MAIN FLOOR (3,040 sq.ft.)
Ceiling Height: 10'



SECOND FLOOR (2,170 sq.ft.)
Ceiling Height: 10'



LOWER FLOOR (3,130 sq.ft.)
Ceiling Height: 9'4"

This floor plan is provided for illustrative purposes only. Buyer to verify measurements.

PREPARED FOR: Elite3 & Team | Real One Realty Inc., Brokerage | Tel: 905-281-2888 | Fax: 905-281-2880