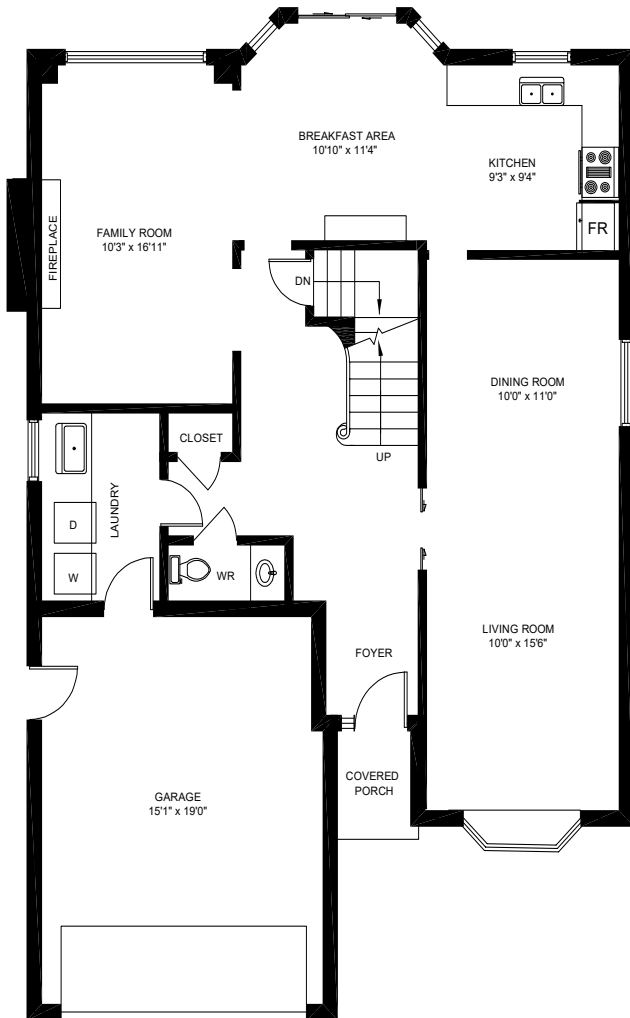


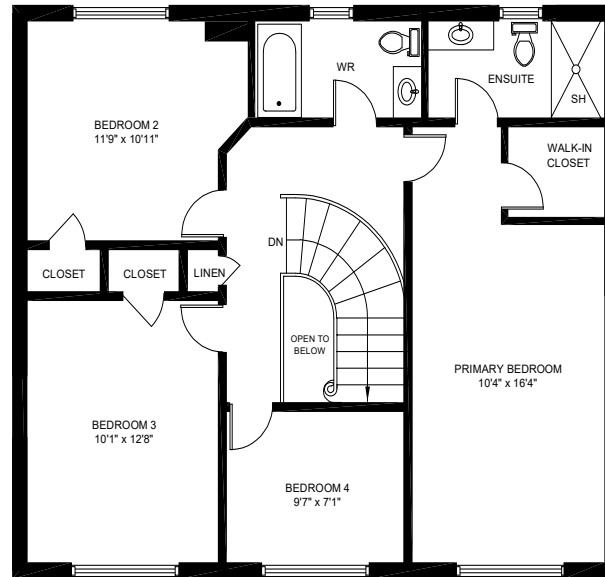


32 Roslo Crt., Oakville

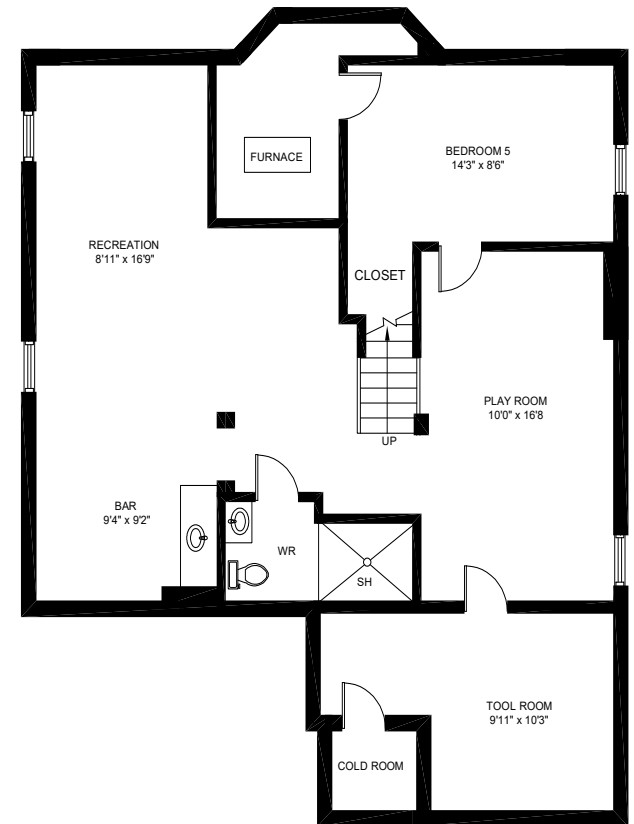
Gross Floor Area Above-Grade (GFA): 1,939 Sq.Ft.



MAIN FLOOR (1,051 sq.ft.)
Ceiling Height: 8'



SECOND FLOOR (888 sq.ft.)
Ceiling Height: 8'



LOWER FLOOR (1,071 sq.ft.)
Ceiling Height: 7'5"

This floor plan is provided for illustrative purposes only. Buyer to verify measurements.

PREPARED FOR: Elite3 & Team | Real One Realty Inc., Brokerage | Tel: 905-281-2888 | Fax: 905-281-2880