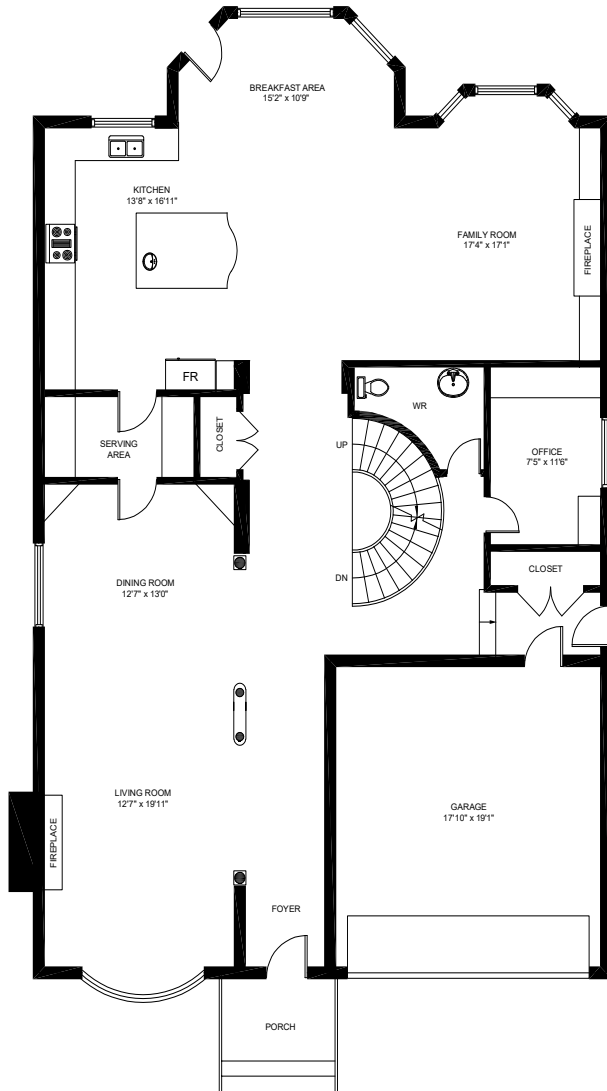


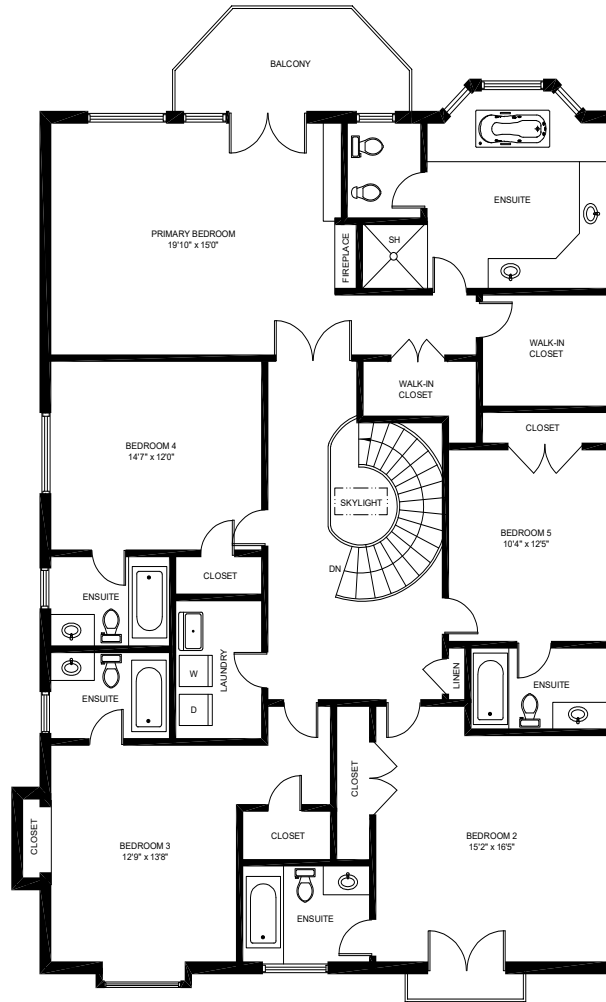


249 Holmes Ave., North York

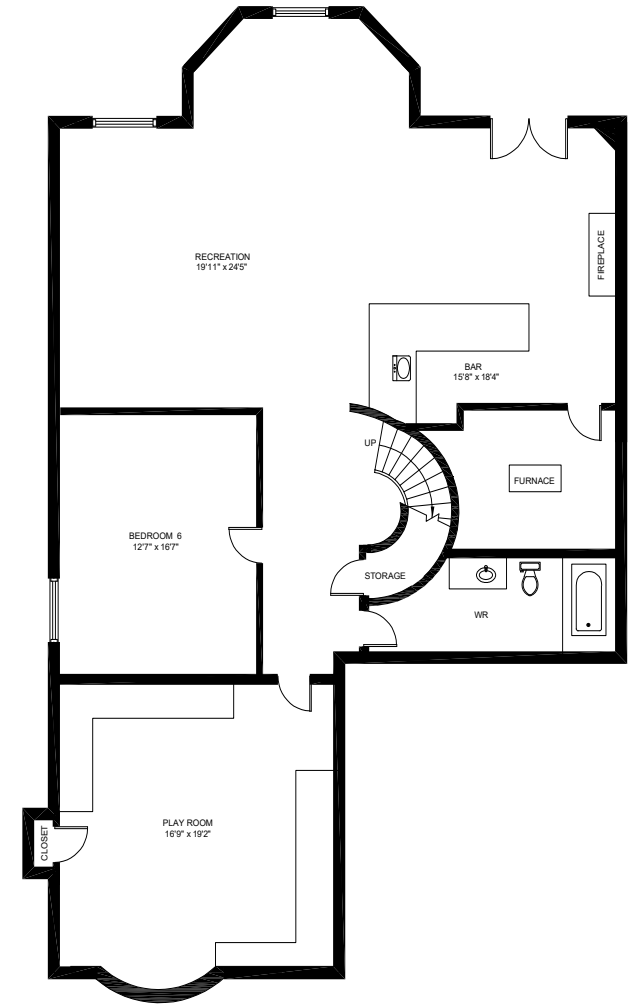
Gross Floor Area Above-Grade (GFA): 4,120 Sq.Ft.



MAIN FLOOR (1920 sq.ft.)
Ceiling Height: 10'



SECOND FLOOR (2200 sq.ft.)
Ceiling Height: 9'



LOWER FLOOR (1920 sq.ft.)
Ceiling Height: 8'

This floor plan is provided for illustrative purposes only. Buyer to verify measurements.

PREPARED FOR: Elite3 & Team | Real One Realty Inc., Brokerage | Tel: 905-281-2888 | Fax: 905-281-2880