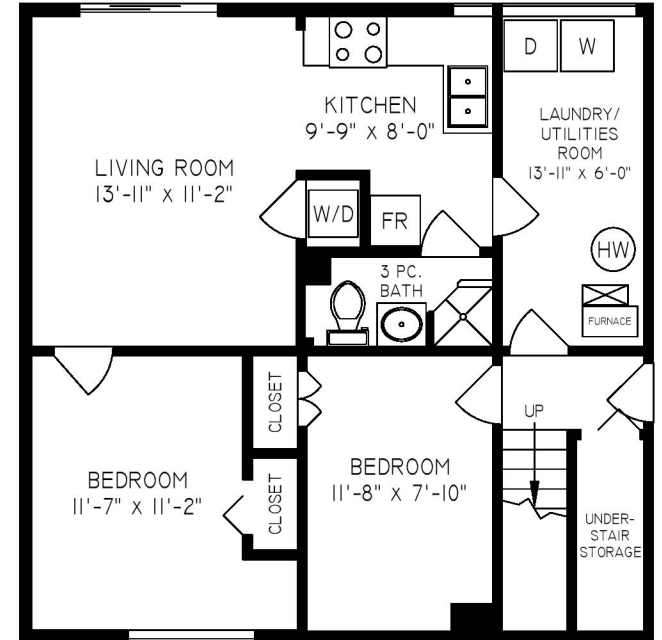
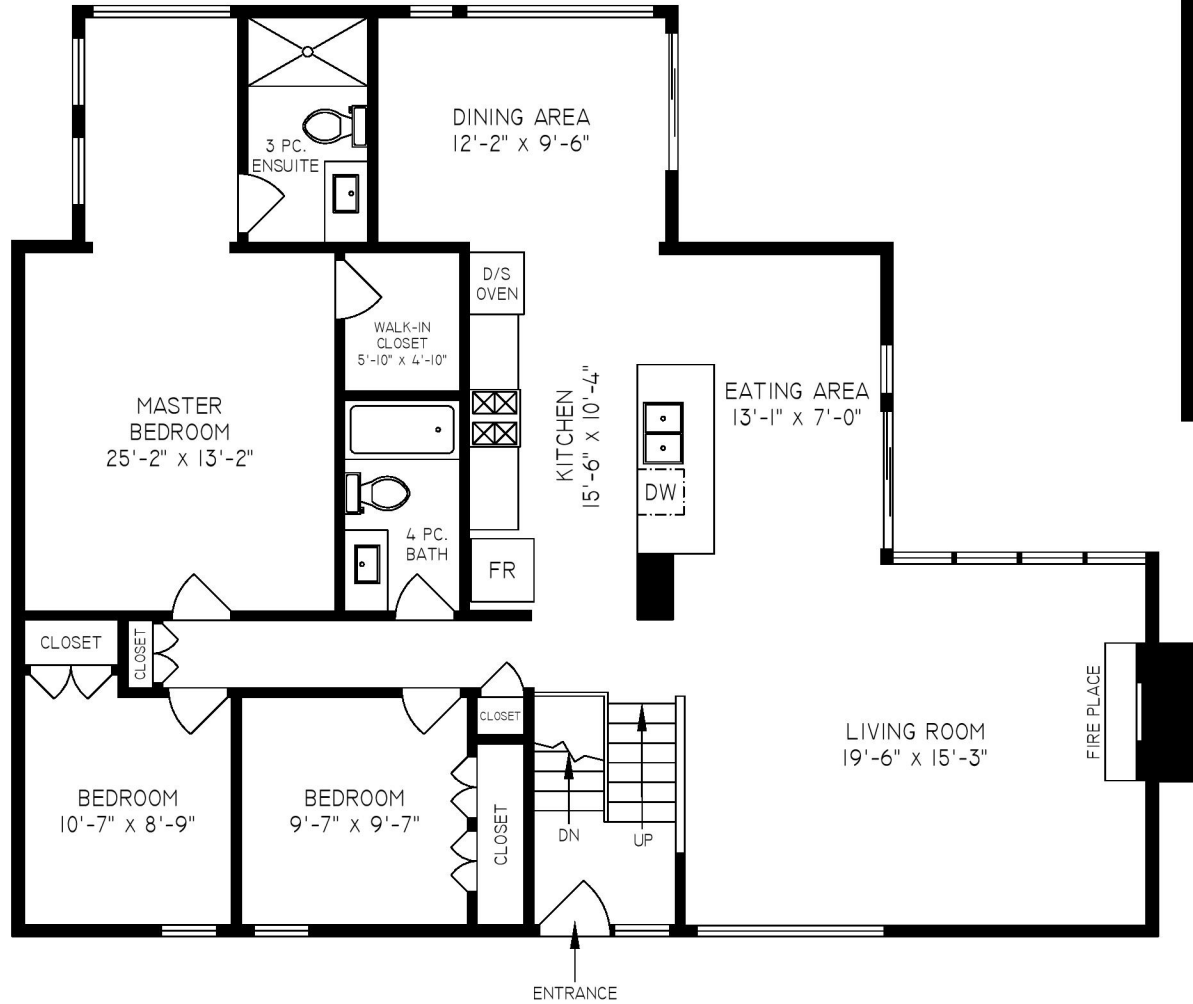
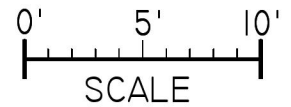




**MAIN FLOOR**  
**1543 SQ. FT.**  
 8'-0" CEILING HEIGHT



**LOWER FLOOR**  
**724 SQ. FT.**  
 8'-0" CEILING HEIGHT



**2639 BYRON ROAD, NORTH VANCOUVER**

FLOOR	AREA (SQ. FT.)
	FINISHED
MAIN	1543
LOWER	724
<b>TOTAL</b>	<b>2267</b>

THE REPRESENTED FLOOR PLANS ARE NOT SUITABLE FOR CONSTRUCTION/ARCHITECTURAL PURPOSES. EVERY EFFORT HAS BEEN MADE TO REPRESENT ALL DIMENSION ACCURATELY. E&O UNINSURED.