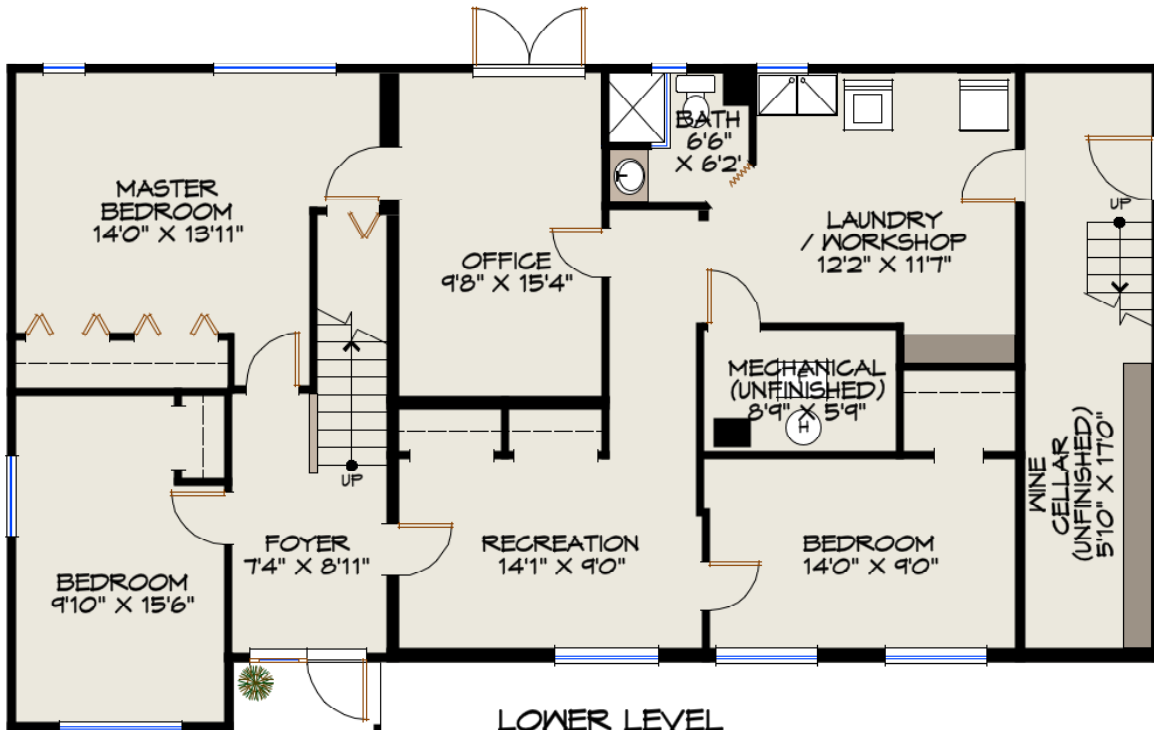


MAIN LEVEL



LOWER LEVEL

351 SEYMOUR RIVER PLACE
NORTH VANCOUVER, BC

MAIN LEVEL:	1400 SF
LOWER LEVEL:	1358 SF
TOTAL FINISHED FLOOR AREA:	2758 SF
UNFINISHED UPPER LEVEL:	183 SF
UNFINISHED LOWER LEVEL:	236 SF
TOTAL FLOOR AREA:	3177 SF

TRUESPACE DESIGN
PREMIUM REAL ESTATE PLANS
604-986-8649 / 778-628-5072
WWW.TRUE-SPACE.CA



NORTH

ROYAL LEPAGE **Sussex**
Gavin Hughes

Cell: 604-626-6618
Tel: 604-984-9711
Fax: 604-677-6180

gavin@gavinhughes.ca
www.gavinhughes.ca