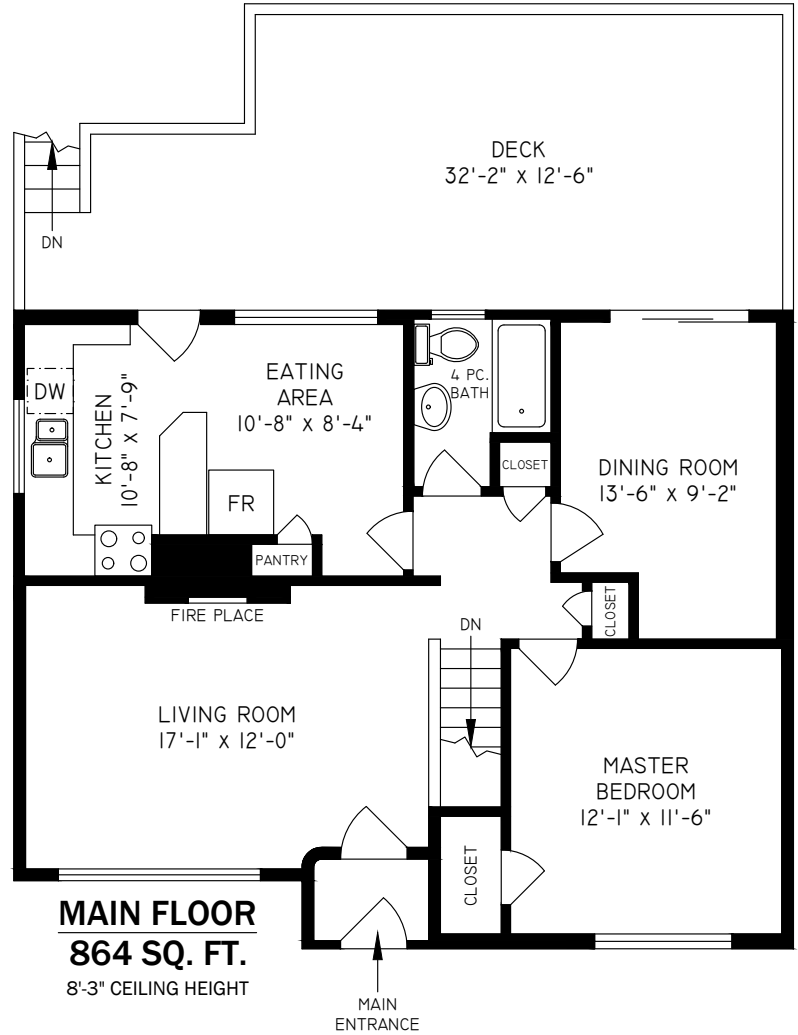
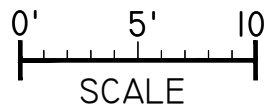


LOWER FLOOR
864 SQ. FT.
 6'-10" CEILING HEIGHT



MAIN FLOOR
864 SQ. FT.
 8'-3" CEILING HEIGHT



509 17th STREET EAST, NORTH VANCOUVER

FLOOR	AREA (SQ. FT.)		
	FINISHED	DECK	STORAGE
MAIN	864	371	-
LOWER	864	-	206
TOTAL	1728	371	206



Harcourts