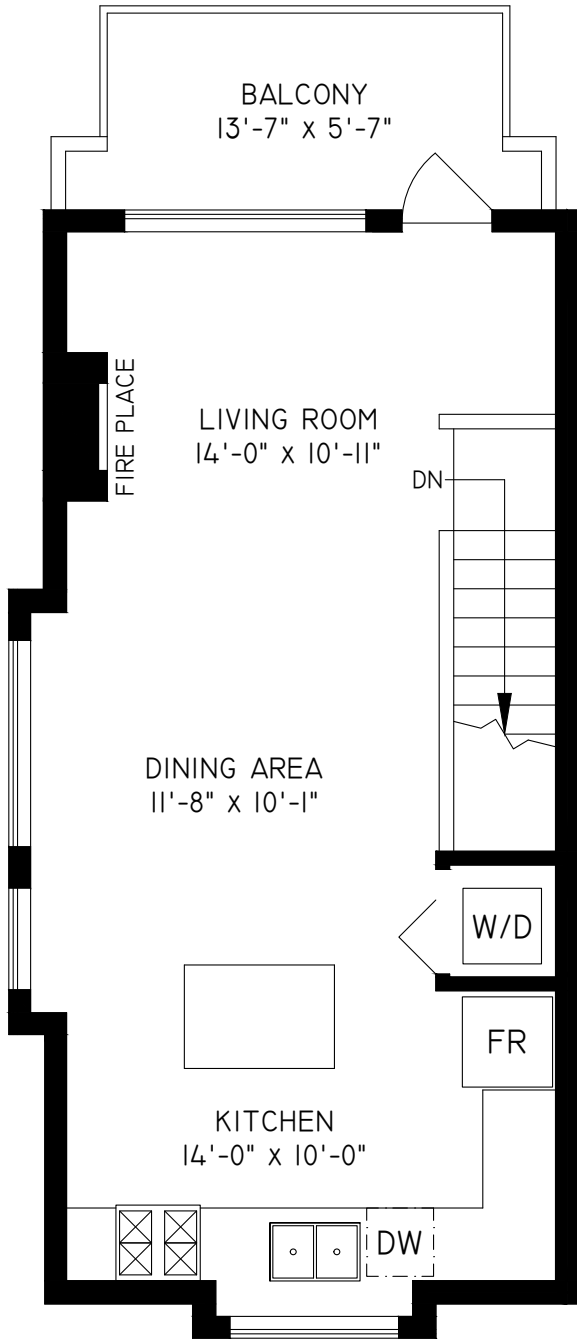
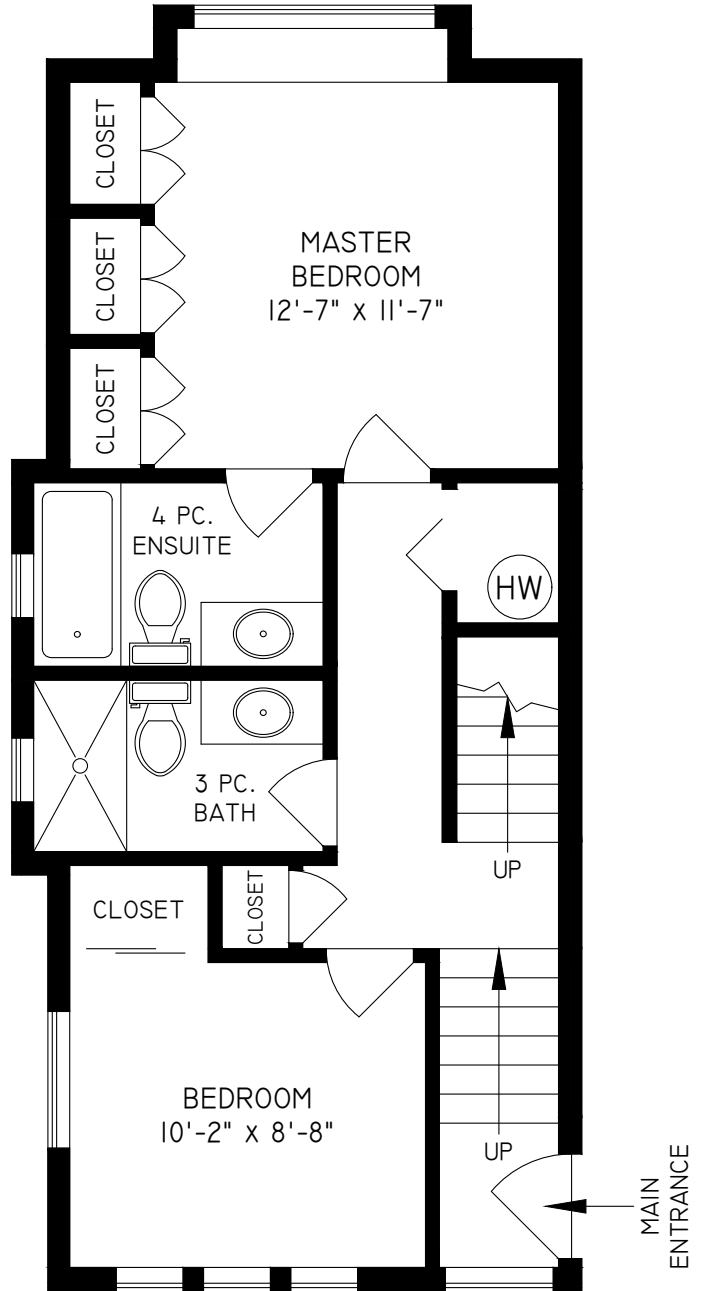




MAIN FLOOR
490 SQ. FT.
 8'-0" CEILING HEIGHT



LOWER FLOOR
558 SQ. FT.
 8'-0" CEILING HEIGHT

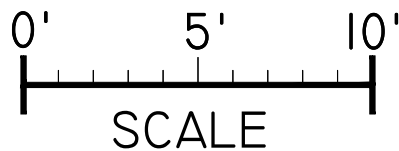


#1 - 2780 ALMA STREET, VANCOUVER

FLOOR	AREA (SQ. FT.)	
	FINISHED	BALCONY
MAIN	490	74
LOWER	558	-
TOTAL	1048	74



Harcourts



THE REPRESENTED FLOOR PLANS ARE NOT SUITABLE FOR CONSTRUCTION/ARCHITECTURAL PURPOSES. EVERY EFFORT HAS BEEN MADE TO REPRESENT ALL DIMENSION ACCURATELY, & IS INSURED.