



**John Massullo**

**HOMETEAM REAL ESTATE GROUP**

604.649.7995

John@hometeamreg.ca

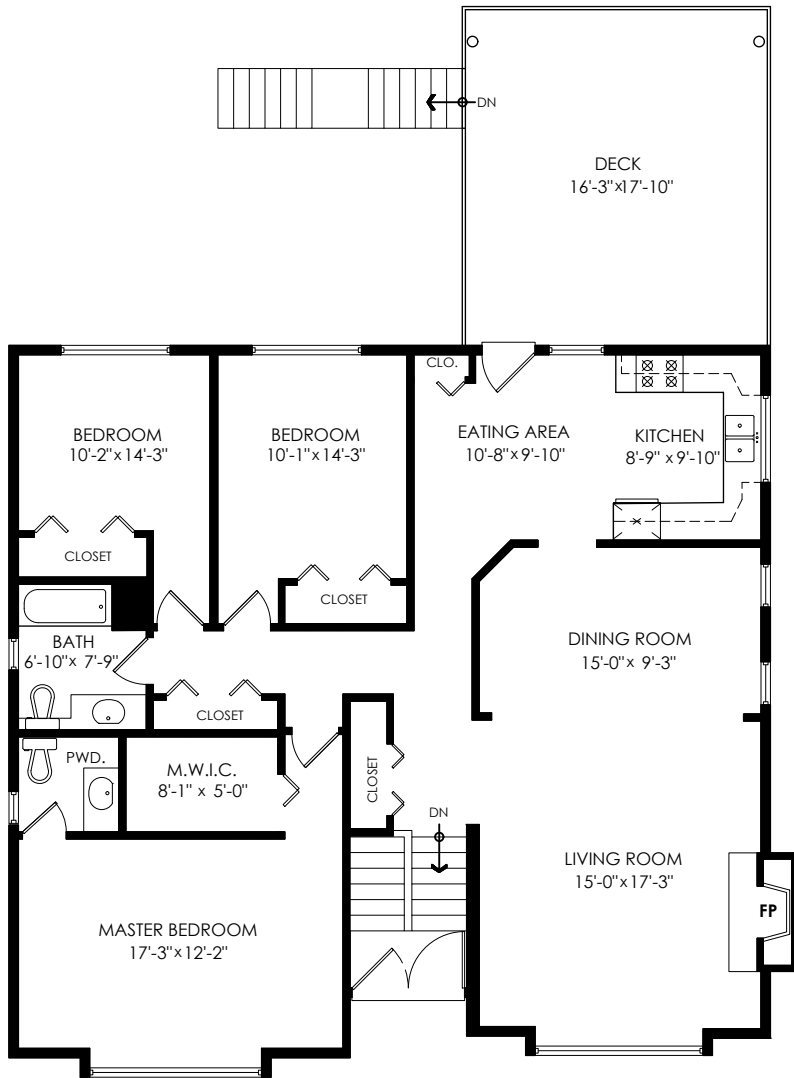
RE/MAX All Points Realty

hometeamrealestategroup.ca

# 439 W 15 Street, North Vancouver

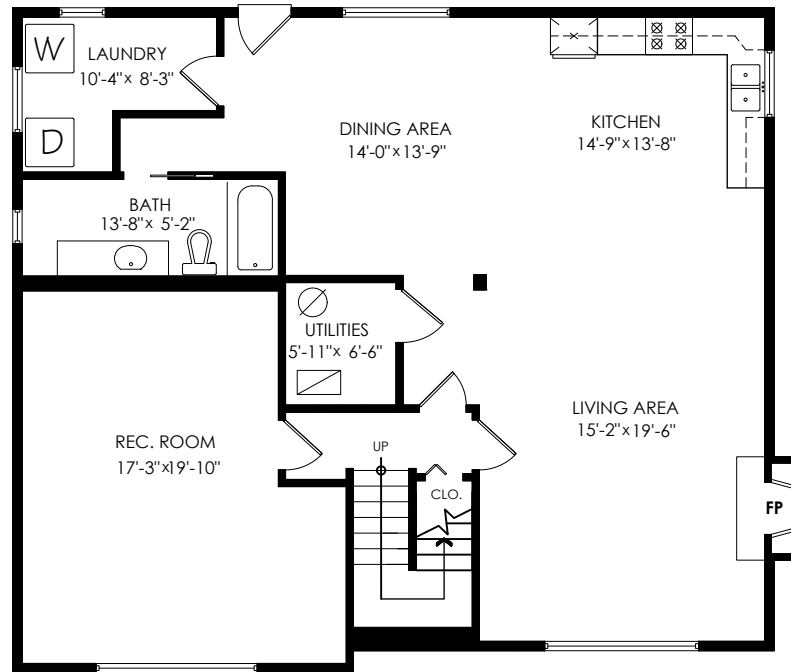
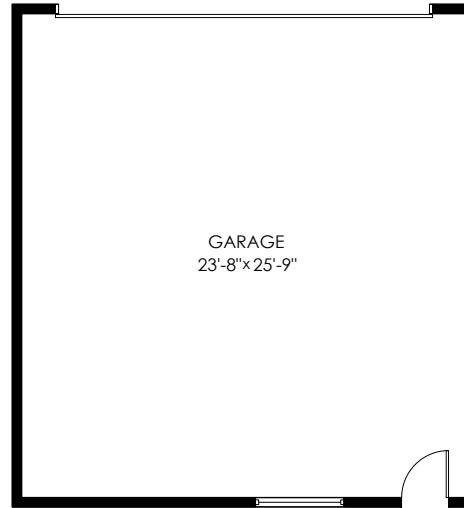
Main Floor:	1,519 sq.ft.
Lower Floor:	1,408 sq.ft.
<b>Total:</b>	<b>2,927 sq.ft.</b>

Garage:	660 sq.ft.
Deck:	296 sq.ft.
<b>Total Extras:</b>	<b>956 sq.ft.</b>



**Main Floor Plan**

Floor Area: 1519 sq.ft.  
Ceiling Height: 8'

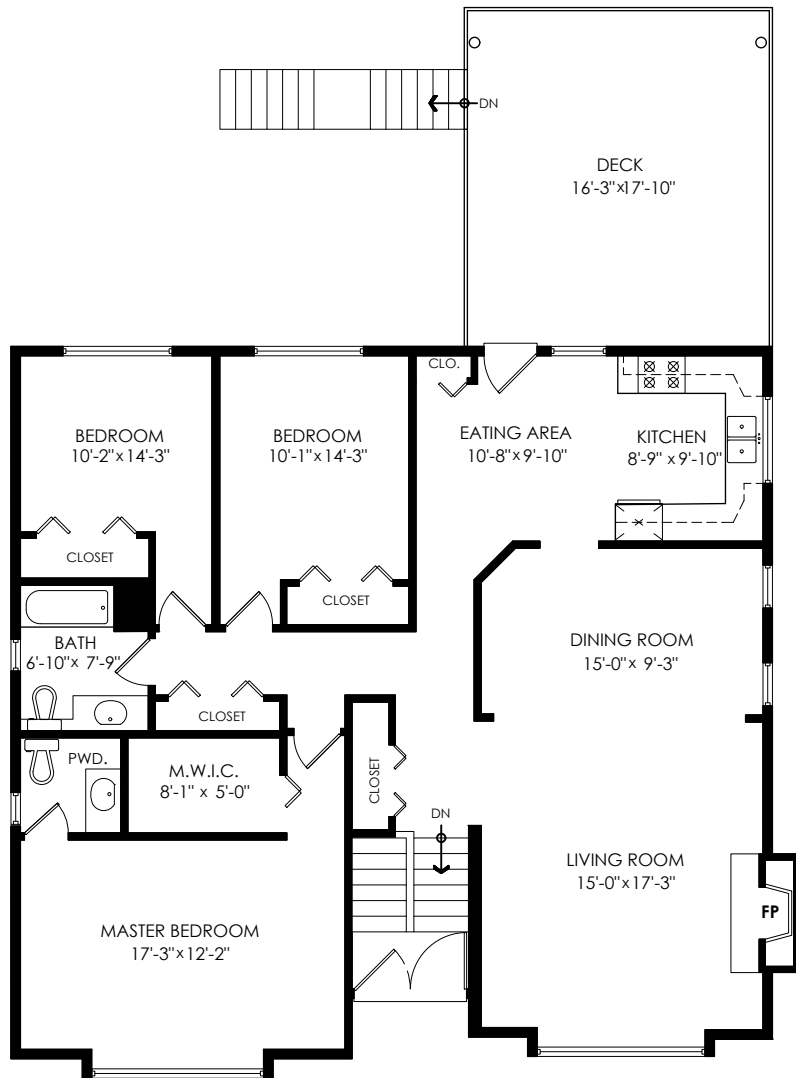


**Lower Floor Plan**

Floor Area: 1408 sq.ft.  
Ceiling Height: 8'-1"

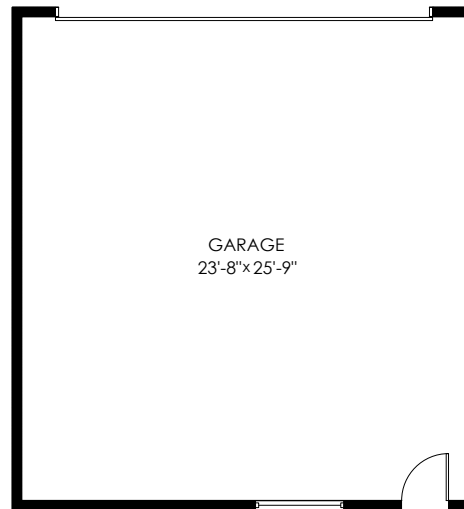


# 439 W 15 Street, North Vancouver



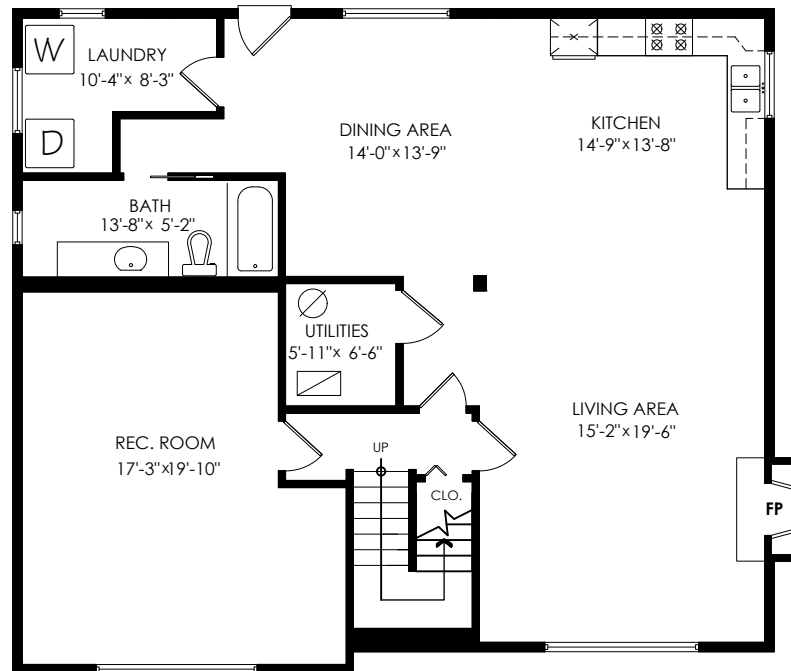
### Main Floor Plan

Floor Area: 1519 sq.ft.  
Ceiling Height: 8'



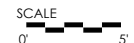
Main Floor: 1,519 sq.ft.  
Lower Floor: 1,408 sq.ft.  
**Total: 2,927 sq.ft.**

Garage: 660 sq.ft.  
Deck: 296 sq.ft.  
**Total Extras: 956 sq.ft.**



### Lower Floor Plan

Floor Area: 1408 sq.ft.  
Ceiling Height: 8'-1"





Houses:

Total square footage is calculated to the outside of exterior walls.

Room sizes are dimensioned to the inside of the walls. This is because you need to know what you can fit in that room. When you add up the total of the room sizes it will not equal the total square footage of the property. This method of adding up room sizes will not account for wall thickness, interior hallways, exterior wall thickness, closets and many other areas that are included in total sqft.

Any space that is not suitable for year-round use or has a ceiling height of less than 4 feet will not be considered living space. An example of this includes a deck, garage or attic. If there isn't heat, insulation or room for an adult to stand, then it will not be included in the living space.

Cantilevered fireplaces, chimneys and plant windows are also not considered living space.

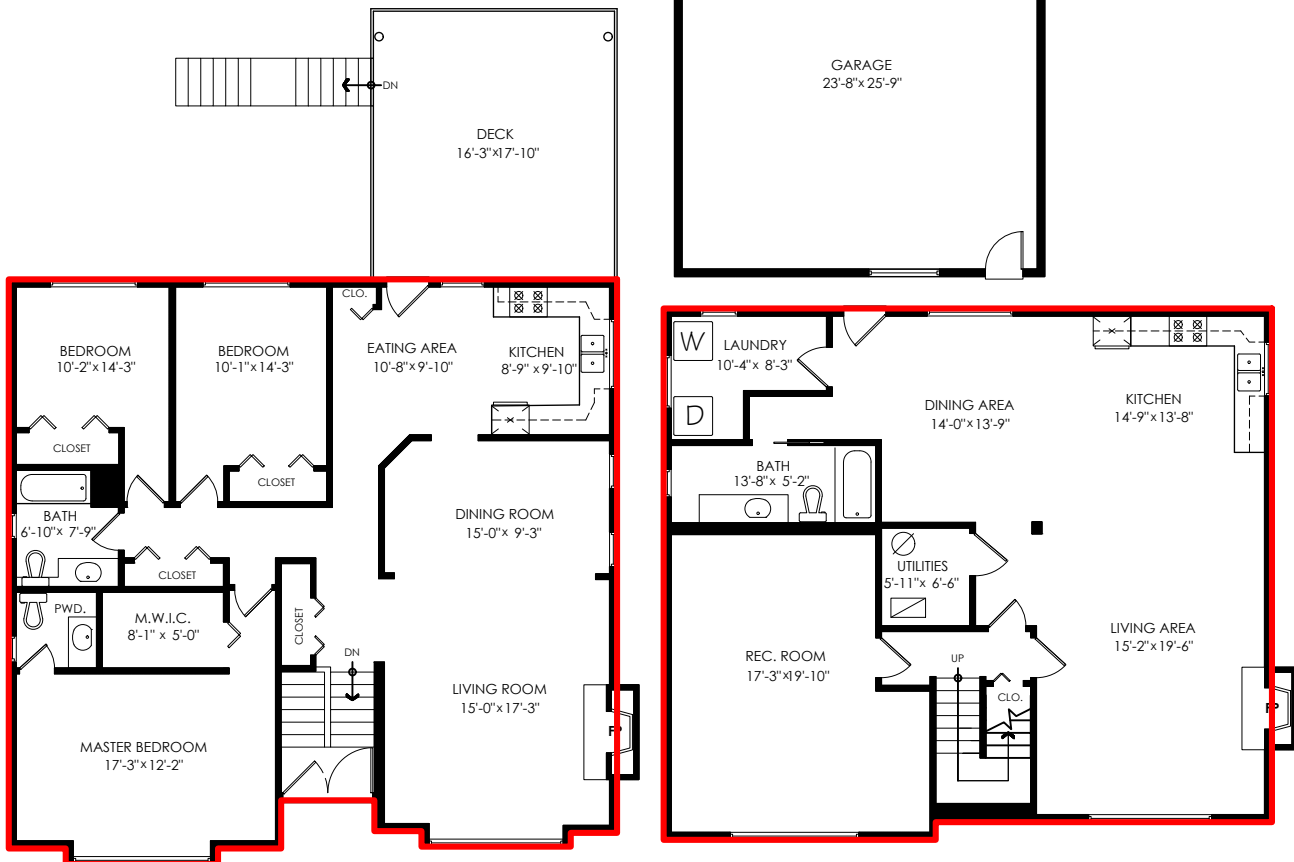
Included in the living space will be the measurements for stair treads for the floor they service as well as the space under the lowest floor's stairs.

Areas open to the floor below (also known as double height ceilings) are not considered living space because there is no floor.

Main Floor: 1,519 sq.ft.  
 Lower Floor: 1,408 sq.ft.  
**Total: 2,927 sq.ft.**

Garage: 660 sq.ft.  
 Deck: 296 sq.ft.  
**Total Extras: 956 sq.ft.**

**439 W 15 Street, North Vancouver**



**Main Floor Plan**  
 Floor Area: 1519 sq.ft.  
 Ceiling Height: 8'

**Lower Floor Plan**  
 Floor Area: 1408 sq.ft.  
 Ceiling Height: 8'-1"