

3945 Jingle Pot Road

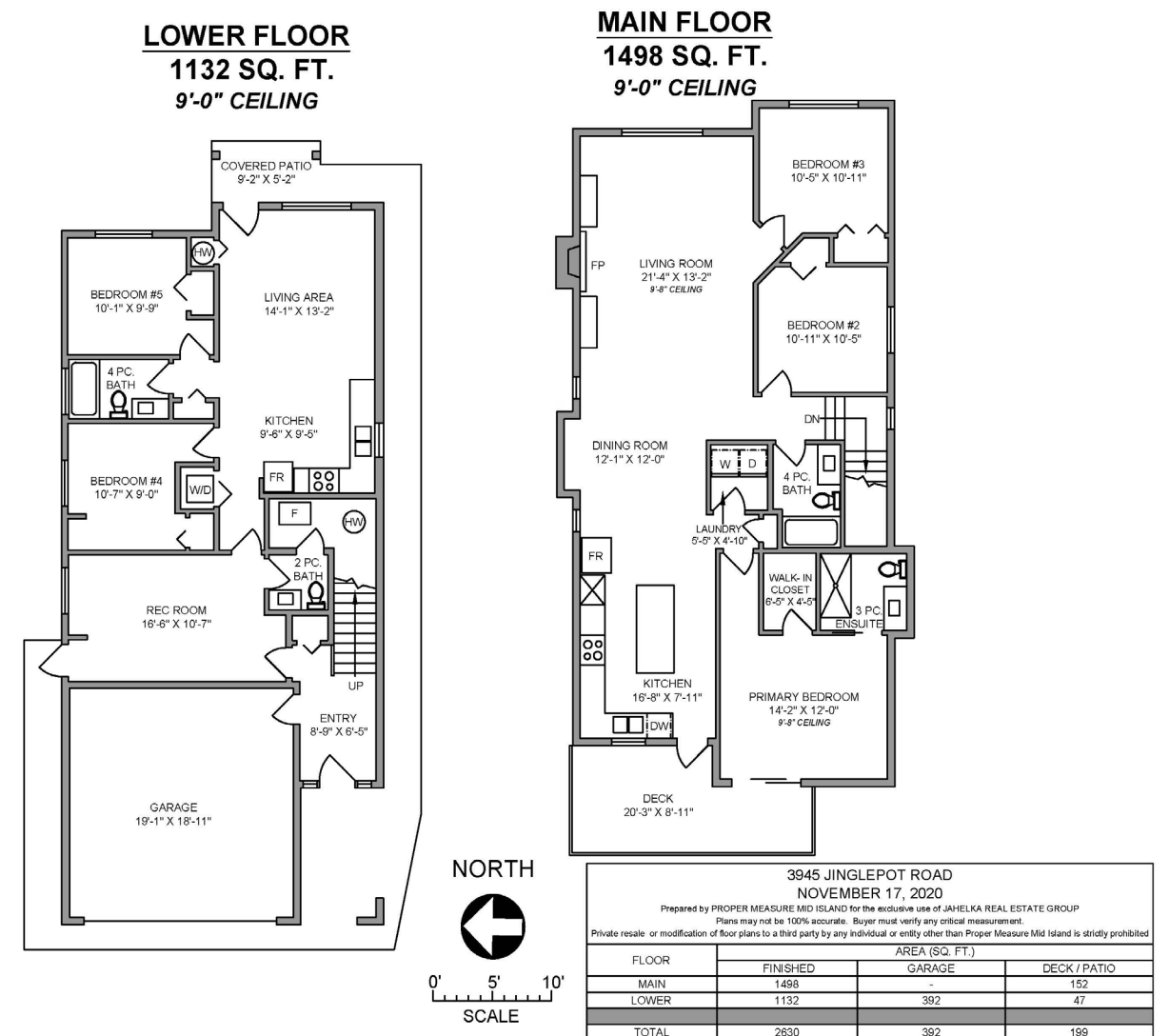
North Jingle Pot, Nanaimo, BC



JAHELKA REAL ESTATE GROUP

Real Estate Redefined





FEATURES

<i>Style:</i>	Ground Level Entry, Main Up
<i>Suite:</i>	2-Bed, Legal Basement Suite

<i>Living Area:</i>	2,630 sqft
<i>Bedrooms:</i>	5
<i>Bathrooms:</i>	4
<i>Lot Size:</i>	0.12 acres
<i>Parking:</i>	Double Garage

The lower level offers the main residence a rec room with a convenient 2-piece bathroom along with access to the 2-car garage while the two-bedroom suite boasts its own entrance, laundry facilities, open concept living/dining space, and a 4-piece bathroom.

Data and measurements are approximate and should be verified if important. Price + GST.



FEATURED LISTING

by Carlee Jahelka, BA

PERSONAL REAL ESTATE CORPORATION

C 250.616.1020

P 250.751.0804

TF 1.800.377.4374

carlee@jahelkagroup.com

www.jahelkarealestategroup.com

www.vancouverislandpropertysearch.com



JAHELKA REAL ESTATE GROUP

Real Estate Redefined



Royal LePage Nanaimo Realty **COMMERCIAL**
4200 N Island Highway, Nanaimo
BC V9T 1W6

ROYAL LEPAGE
NANAIMO REALTY