

924 Beach Drive

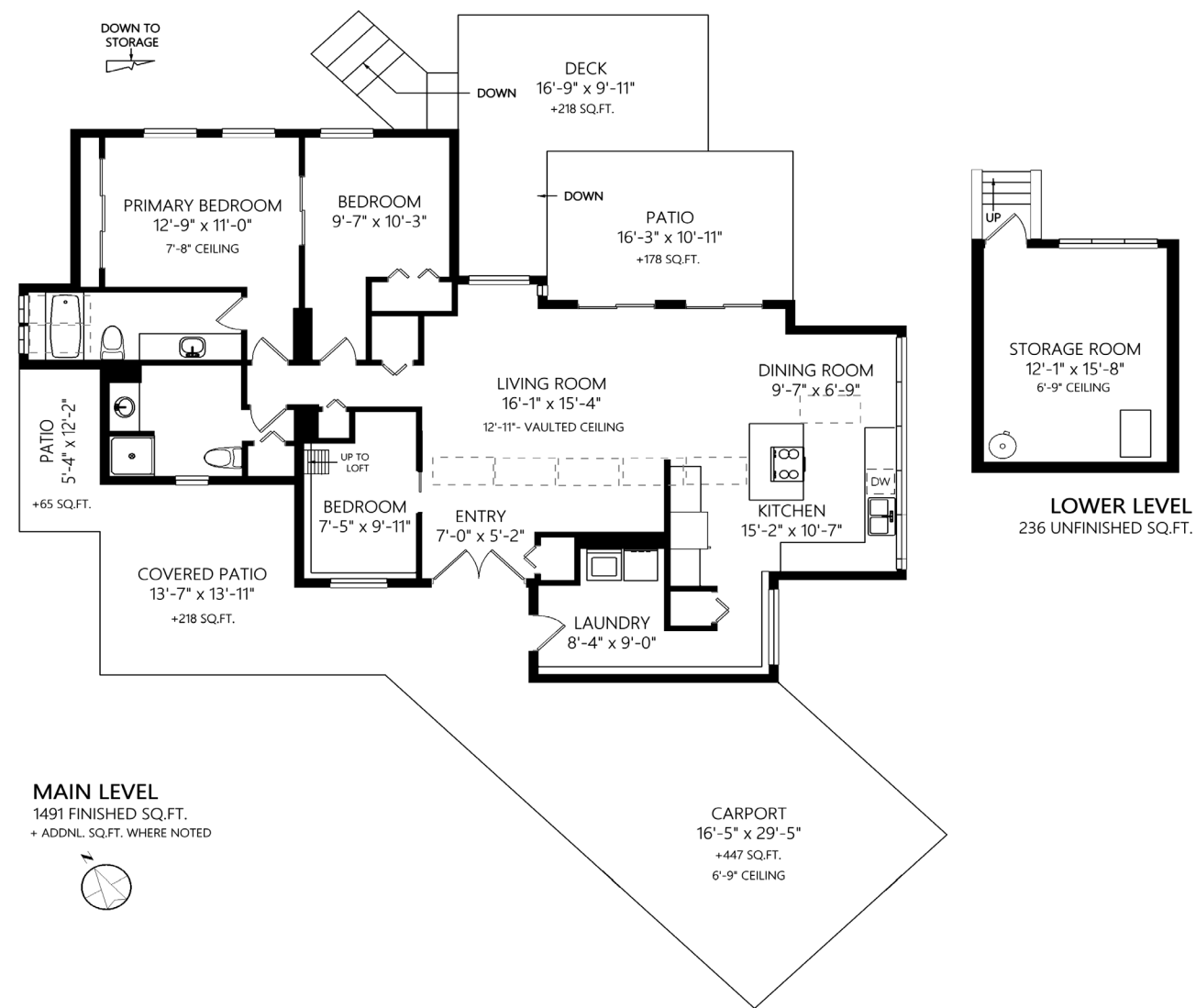
Departure Bay



JAHELKA REAL ESTATE GROUP

Real Estate Redefined





WELCOME HOME...

Nestled amongst Japanese-inspired landscaping with a parkland backdrop, this home, is situated on a 0.25-acre lot in one of Departure Bay's most sought-after locations. Within walking distance to the ferry, seaplanes, & amenities, the new owners will also appreciate Beach Estate Park at the rear of the home creating a private backyard oasis surrounded by nature with a 0.9 km trail leading to the beach & offering a quintessential west coast experience on your doorstep while the 679 sqft of patio & deck space allow you to be at one with nature without leaving your yard.

The home's single-story design, with 3 beds+loft & 2 baths, promotes convenience and accessibility while vaulted ceilings & an abundance of windows & skylights bathe the 1,491 sqft of living space in natural light.

An open concept living/dining area provides easy access to the rear patio & deck, an extension of the living space, & the perfect place to unwind on a warm afternoon, while the bright kitchen features a wall of windows, ample cabinet space, & an island, with access to the laundry room which also serves as a mudroom.

Down the hall is the primary bedroom & 3-piece ensuite featuring a sunken California bathtub overlooking a private garden, bringing the outside in & adding a spa-like quality to bath night. A second bed & 3-piece bathroom are mere steps away, while a third bedroom, just off the main entrance, serves well as a den or an office with access to the loft above.

All storage needs are met with a carport & a 236 sqft unfinished room below, while recent updates to the roof & skylights along with the addition of a high-efficiency gas furnace, following a complete renovation in the '90s led by the renowned architect Rudy Kovacs, have kept this well-loved home in good working order.

If you're looking for a little piece of paradise in a tranquil setting close to recreation, transportation, & amenities look no further as this home will not disappoint. Please verify data & measurements if important.

FEATURES

Style:	West Coast
Bedrooms:	3 + Loft
Bathrooms:	2
Living Area:	1,491 sqft
Lot Size:	0.25 acres
Parking:	Double Carport
Year Built:	1957
Taxes:	\$3,414 (2020)





FEATURED LISTING

by *Carlee Jahelka, BA*
PERSONAL REAL ESTATE CORPORATION

C 250.616.1020

P 250.751.0804

TF 1.800.377.4374

carlee@jahelkagroup.com

www.jahelkarealestategroup.com

www.vancouverislandpropertysearch.com



JAHELKA REAL ESTATE GROUP

Real Estate Redefined



Royal LePage Nanaimo Realty
4200 N Island Highway, Nanaimo
BC V9T 1W6

