

203-225 Rosehill Street

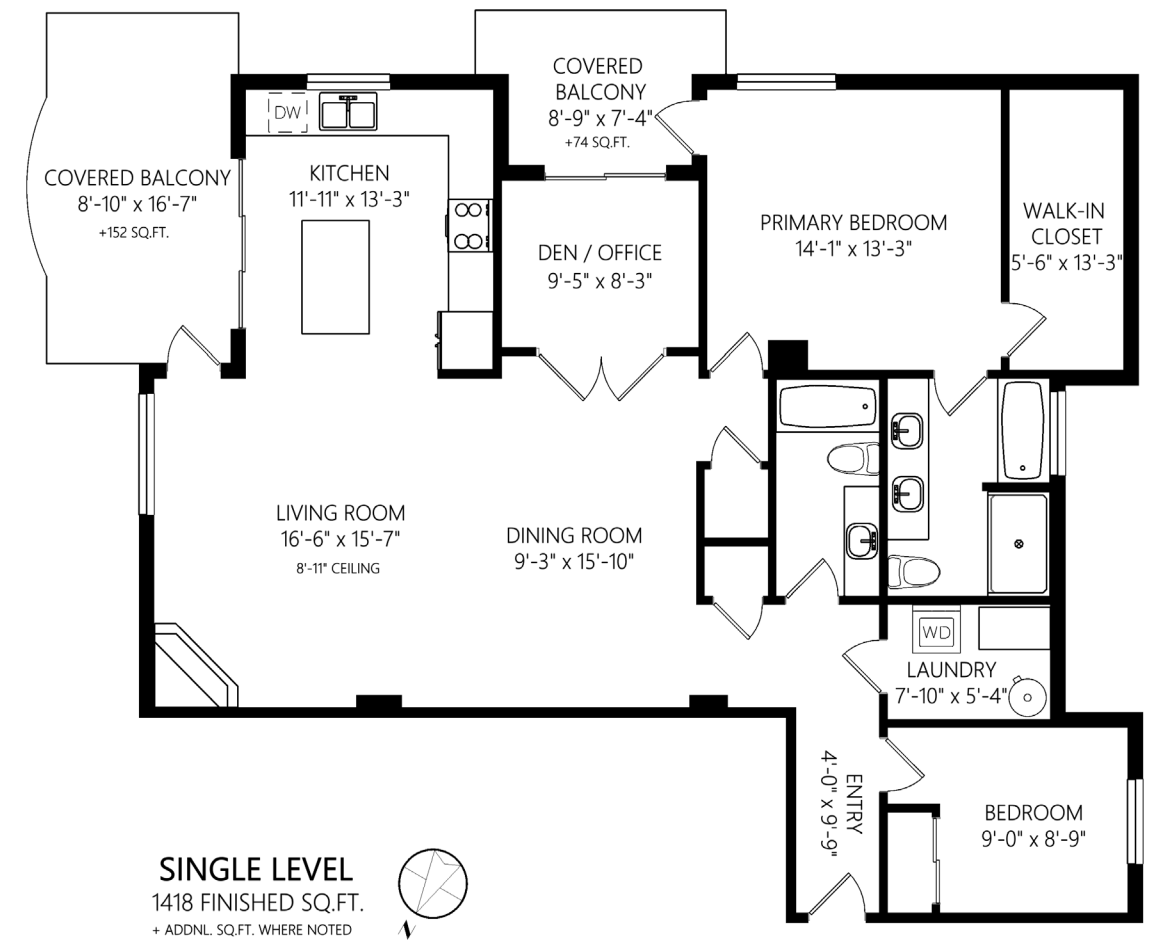
Brechin Hill



JAHELKA REAL ESTATE GROUP

Real Estate Redefined





WELCOME HOME...

For those drawn to all that urban life has to offer, the search for your new home is over. Ideally situated in the southeast corner of the second floor of the prestigious Marine Vista building just two blocks from the sea wall and the Nanaimo Yacht Club, and a short distance from the inner harbour and downtown core, this executive condo offers a comfortable, low maintenance lifestyle, and the freedom to enjoy all that the west coast has to offer.

A generous 1,418 sqft of functional and tastefully finished living space provides two bedrooms plus a den/office, two recently updated bathrooms, and a convenient laundry/storage room with features such as engineered hardwood flooring, 9' ceilings, large windows that bathe the space in natural light, and a heat pump for year-round climate control sure to tick the boxes.

The open concept living/dining area complete with a corner fireplace provides the perfect setting for a cozy night in as well as plenty of space for entertaining family and friends, while the well-appointed kitchen boasts stainless steel appliances, lots of storage, solid surfaces, and an island with a convenient eating bar.

A large covered balcony off the kitchen and living area offers views out to the harbour and a place to unwind at the end of a long day while a second outdoor spot off the den overlooking the manicured rooftop garden and lawn area sitting atop the parking garage below, would be the ideal spot for morning coffee or for an after-dinner drink.

The bedrooms are separated, providing an element of privacy for the new homeowners and their guests, with the second bedroom located off the entrance, steps from the main 4-piece bathroom, and the primary suite off the living area complete with access to the smaller balcony, a walk-in closet, and a spa-like 5-piece ensuite with soaker tub and a spacious walk-in shower.

A well-run strata, Marine Vista offers its residents a secure place to call home, an underground parking stall for added convenience, and pets are allowed with some restrictions.

The perfect package for urban dwellers with discerning tastes who appreciate the proximity to the waterfront and all that the eclectic downtown has to offer, this tastefully finished, well-situated, and move-in-ready condo has it all and won't disappoint. Verify data & measurements if important.

FEATURES

Complex:	Marine Vista
Bedrooms:	2 + Den
Bathrooms:	2
Living Area:	1,418 sqft
Parking:	Underground
Year Built:	2008
Strata Fee:	\$591 / month
Taxes:	\$3,620 (2020)





FEATURED LISTING

by *Carlee Jahelka, BA*
PERSONAL REAL ESTATE CORPORATION

C 250.616.1020

P 250.751.0804

TF 1.800.377.4374

carlee@jahelkagroup.com

www.jahelkarealestategroup.com

www.vancouverislandpropertysearch.com



JAHELKA REAL ESTATE GROUP

Real Estate Redefined



Royal LePage Nanaimo Realty
4200 N Island Highway, Nanaimo
BC V9T 1W6

