

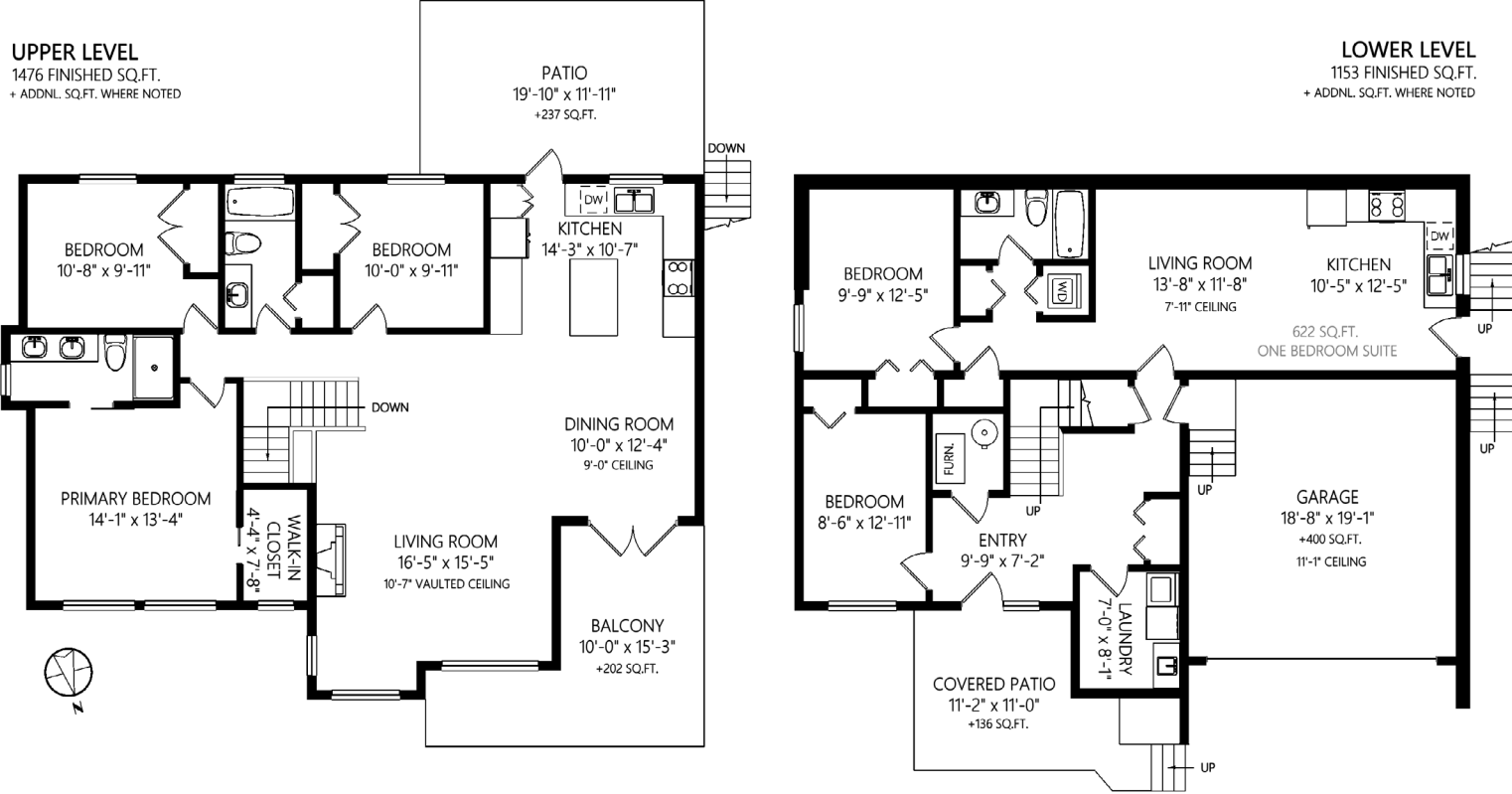
7355 Aulds Road
Upper Lantzville



JAHELKA REAL ESTATE GROUP

Real Estate Redefined





WELCOME HOME...

Situated on a 0.52-acre lot at the base of the Lantzville Foothills in close proximity to schools, amenities, recreation, & shopping & dining in North Nanaimo, you will find this modern executive home with a legal 1-bed suite.

A functional floor plan offers 2,629 sqft of tastefully finished, contemporary living space with 5 beds, 3 baths, & views out to the ocean & mountains with an open concept upper floor ideal for entertaining and family time. The heart of the home, the chef's kitchen boasts solid surface counters, stainless steel appliances, & an island while a 230 sqft patio & backyard accessible from this space is an extension of the living area for entertaining or for everyday use. An adjoining dining space is the ideal venue for a casual meal or for more formal dining while the living room features vaulted ceilings & a stacked stone fireplace adding ambiance for all occasions while a 200 sqft balcony provides a comfortable setting to enjoy a glass of wine as you take in the ocean views.

There are 3 beds on this family-friendly upper level including the primary suite with a 4-pce ensuite featuring a spacious walk-in shower with rain shower head & dual sinks & a large walk-in closet with built-in shelving.

The lower level offers a bedroom & laundry facilities in the mainspace & access to the well-appointed 1-bed suite featuring contemporary finishes, a spacious living space, a full kitchen with solid surface counters, a 4-pce bathroom, laundry facilities, & its own entrance.

With a low-maintenance exterior allowing more time to enjoy your island life, a double car garage for all your storage needs, high-efficiency natural gas furnace, air conditioning unit & modern finishings, attention to detail is evident throughout this home and is sure to impress.

Ideally located in desirable Upper Lantzville, this move-in-ready, tastefully finished home with income potential offers the ideal package that you won't want to miss. Verify data & measurements if important.

FEATURES

Style:	Ground Level Entry Main Up
Suite:	1-Bed, Legal
Bedrooms:	5
Bathrooms:	3
Living Area:	2,629 qft
Lot Size:	0.52 acres
Parking:	Double Garage
Year Built:	2020





FEATURED LISTING
by Carlee Jahelka, BA
PERSONAL REAL ESTATE CORPORATION

C 250.616.1020
P 250.751.0804
TF 1.800.377.4374
carlee@jahelkagroup.com
www.jahelkarealestategroup.com
www.vancouverislandpropertysearch.com



JAHELKA REAL ESTATE GROUP
Real Estate Redefined



Royal LePage Nanaimo Realty
4200 N Island Highway, Nanaimo
BC V9T 1W6

