

# 2481 NADELY CRESCENT

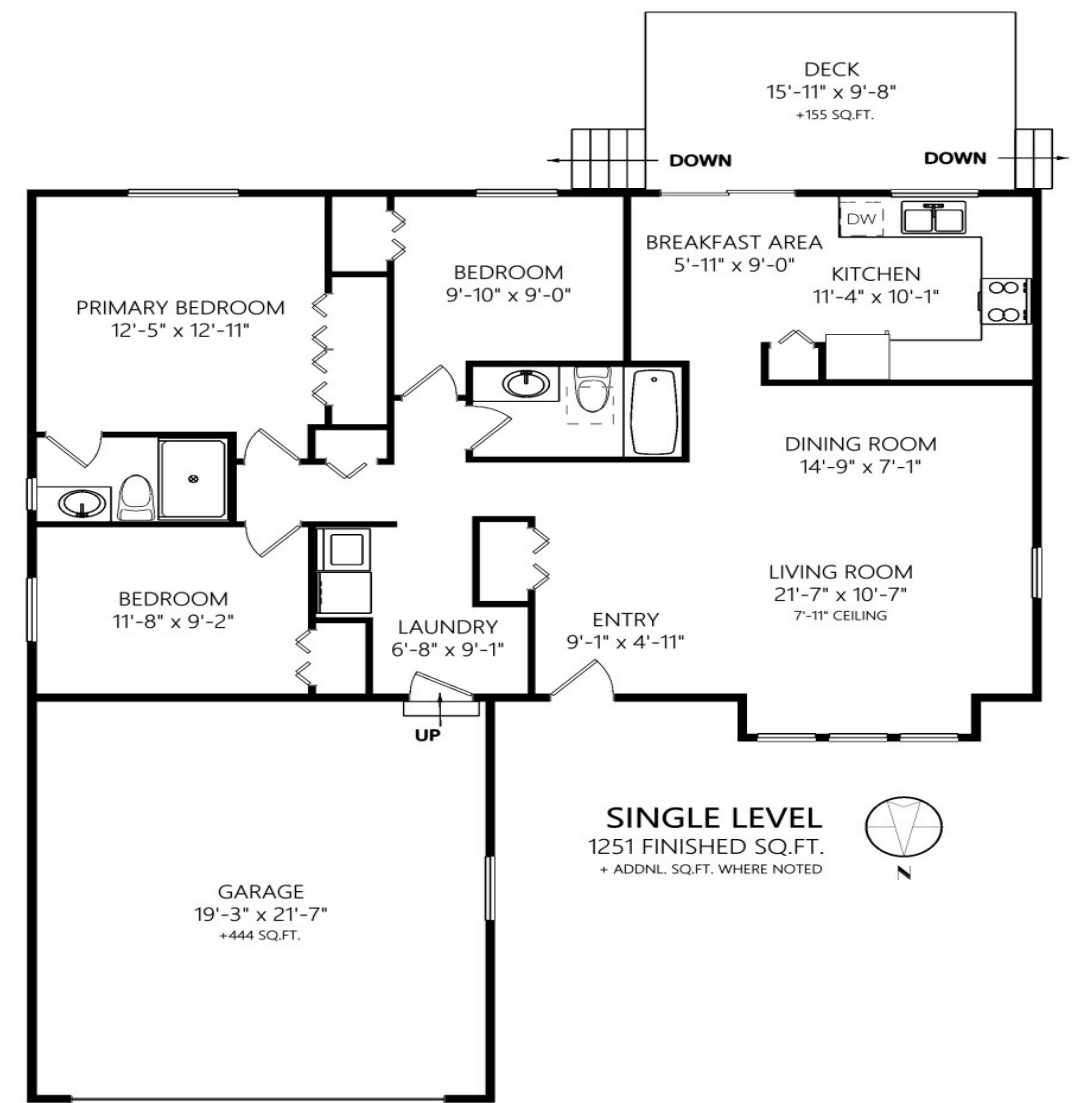
Diver Lake, Nanaimo BC



**JAHELKA REAL ESTATE GROUP**

Lifestyle Properties • Development Marketing





WELCOME HOME...

FEATURES

If you are seeking comfortable single-storey living in a quiet neighbourhood look no further. This well-maintained 3 bedroom, 2 bathroom, 1,251 sqft rancher is ideally situated in a family-friendly Diver Lake neighbourhood, just minutes from an elementary school and amenities, and a short distance from recreation at Northfield Marsh Park, Beban Park, and the lake.

The low maintenance 0.15-acre lot offers mature landscaping with a pond and lots of room for play or for those with a green thumb to make it their own, while the 444 sqft attached garage will meet all your storage needs.

Upon entering the home you will appreciate the functional layout that evokes a sense of space with a living/dining room off the entrance and an adjoining well-appointed kitchen complete with an eating area and access to the 155 sqft entertainment deck, the place where family and friends can gather and where memories will be made.

Down the hall, the primary bedroom offers a newly updated and tastefully finished 3-piece ensuite while two further bedrooms plus a 4-piece family bath and a laundry room round off this space.

First time on the market, this well-loved and well-kept home is in an ideal location and surely won't last long, act now to avoid disappointment!

Data and measurements have been provided by VI Standard, Real Estate Services, BC Assessment, and the Property Report, and should be verified if important.





**FEATURED LISTING**  
by Carlee Jahelka, BA  
PERSONAL REAL ESTATE CORPORATION

C 250.616.1020  
P 250.751.0804  
TF 1.800.377.4374  
carlee@jahelkagroup.com  
www.jahelkarealestategroup.com  
www.vancouverislandpropertysearch.com



**JAHELKA REAL ESTATE GROUP**  
Lifestyle Properties • Development Marketing



Royal LePage Nanaimo Realty  
4200 N Island Highway, Nanaimo  
BC V9T 1W6

