

306-355 STEWART AVENUE

Brechin Hill | Nanaimo

\$279,900



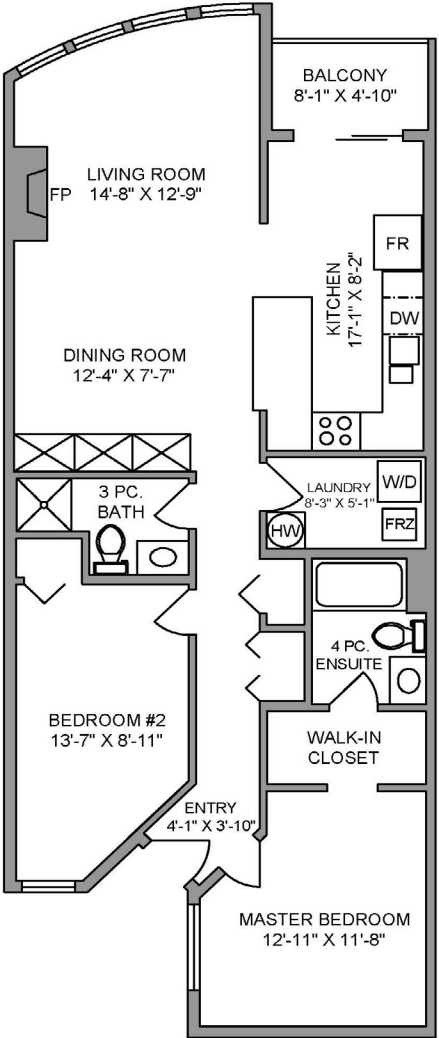
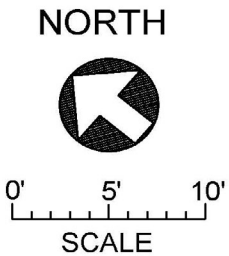
JAHELKA REAL ESTATE GROUP

Real Estate Redefined





306-355 STEWART AVENUE
1075 SQ. FT.



306-355 STEWART AVENUE MARCH 25, 2016 <small>PREPARED BY PROPER MEASURE MID ISLAND FOR THE EXCLUSIVE USE OF JAHLEKA GROUP PLANS MAY NOT BE 100% ACCURATE, IF CRITICAL BUYER TO VERIFY.</small>		
FLOOR	AREA (SQ. FT.)	
	FINISHED	DECK / PATIO
TOTAL	1075	39

WELCOME HOME!

If a lifestyle move is what you are seeking, this rare offering should be at the top of your list. Ideally located just steps up from the seawall and within a block of the prestigious Nanaimo Yacht Club and surrounding boat moorage, this luxurious condo has undergone an extensive renovation, whereby even the most discerning buyer will appreciate the quality of craftsmanship that has gone into modernizing this unit to a standard rarely found on Vancouver Island.

Upon entering this stunning condo, you will immediately be drawn in by the imported Indonesian hardwood flooring, leading you down the hallway to where you will catch your first glimpse of the impressive views of Newcastle Channel and the buzzing Nanaimo Harbour. The main living area, perfectly situated to optimize the magnificent views, features an inviting, open concept design, perfect for entertaining. Updates such as the customized fireplace surround in the living room, and floor-to-ceiling custom cabinetry in the dining room only serve to enhance the ambiance of the unit. The gourmet kitchen is a chef's dream. With stainless steel appliances, custom cabinets, granite countertops and backsplash, and perfectly situated to be a part of the conversation in the living and dining rooms, preparing meals will surely be a treat! Just off the kitchen, you will find your own private balcony overlooking the harbour. Picture yourself enjoying your morning coffee watching eagles soaring overhead or a pod of orcas passing through Newcastle Channel...

In a two-bedroom condo, layout is of the utmost importance. This condo gets full marks here, with the two bedrooms separated by the hallway, and staggered for an element of privacy rarely found in condo living. The master suite offers a walk-in closet and a 4-pc ensuite, tastefully finished with granite countertops and heated tile flooring, which has been replicated in the unit's second bathroom. With the heat pump providing year-round climate control, no detail has been overlooked in this spectacular, move-in ready condo which surely won't last!

All data and measurements are approximate and should be verified if important.

FEATURES

- Complex:** Seaview Park
- Stores:** 4
- Level:** 3
- Size:** 1,075 sqft
- Bedrooms:** 2
- Bathrooms:** 2
- Balcony:** Yes
- View:** Harbour
- Strata Fees:** \$319 (2016)
- Parking:** 1 Underground Stall
+ Additional Parking
- Storage:** 1 Locker
- Taxes:** \$1,661.52
- Year Built:** 1993





GIVING REDEFINED: By working with the Jahelka Real Estate Group you will become a catalyst to change the world at no cost to you, as we will donate \$1,000 of our commission cheque from EACH residential sale to build homes in developing countries as a first step in a movement towards establishing self-sustaining, thriving communities. The Jahelka Real Estate Group also gives generously to many local causes and is a proud supporter of the Royal LePage Shelter Foundation which is a key contributor to Haven House, right here in Nanaimo.



FEATURED LISTING
by Carlee Jahelka

C 250-616-1020
P 250-751-0804
F 250-756-1210
TF 1-800-377-4374
carlee@jahelkagroup.com
www.jahelkagroup.com



JAHELKA REAL ESTATE GROUP
Real Estate Redefined

Royal LePage Nanaimo Realty
4200 N Island Highway, Nanaimo
BC V9T 1W6

