

631 MAPLE STREET

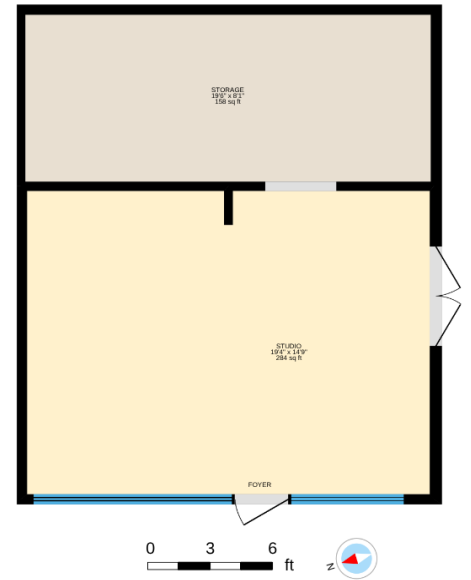
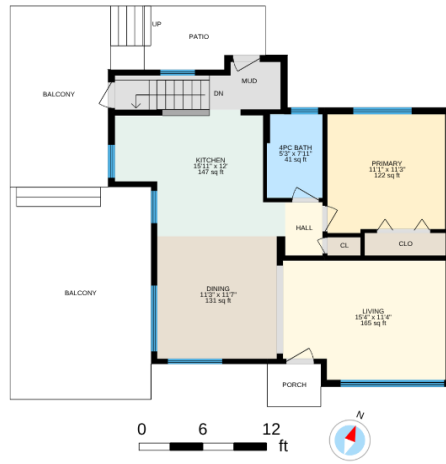
Brechin Hill



JAHELKA
REAL ESTATE GROUP







WELCOME HOME...

Welcome to this bright and comfortable Brechin Hill home, perfectly positioned to take in views of Departure Bay. Offering 1,514 sqft of well-maintained living space on a 0.14-acre lot with lane access, this property also features a 495 sqft detached studio. Boasting vaulted ceilings and walls of windows, this is an inspiring space for artists, makers, or anyone seeking a private retreat with potential for conversion to a carriage home.

The main level offers a warm and inviting living space where large windows frame the coastal views, creating a natural focal point throughout the living and dining areas. The updated kitchen is both functional and welcoming, with modern finishes that complement the home's character. A primary bedroom and bathroom complete this level.

Downstairs, a full-height basement adds flexibility for families, guests, or hobbies with a generous rec room, two additional bedrooms, laundry facilities, and an updated second bathroom.

The detached studio, complete with a dedicated storage area, elevates the home's appeal. This bright and inspiring space is ideal for art, music, remote work, or quiet reflection. With laneway access, this structure also offers meaningful potential for future conversion to a carriage home (buyer to verify), adding versatility for long-term planning.

Outdoor living is easy here. A large balcony above the carport provides an elevated vantage point from which to enjoy the ocean and mountain views, while the rear patio and garden offer peaceful spaces to unwind. Updated siding, updated windows, a heat pump, and thoughtful interior improvements enhance the home's comfort and efficiency.

Located moments from the Departure Bay ferry terminal, Harbourfront Walkway, and close to all amenities, this is a rare opportunity to enjoy oceanview living in a well-loved home with room to grow.

Data and measurements have been provided by ProPhotoVI, BC Assessment, and the Property Report, and should be verified if important.

FEATURES

- Bedrooms:* 3
- Bathrooms:* 2
- Living Area:* 1,514 sqft.
- Lot Size:* 0.14 acres
- Parking:* Carport
- Taxes:* \$4,622 (2025)
- Features:* Ocean views
Updated kitchen
Updated bathrm
Updated windows
Updated siding
Heat pumo
Artists studio



FEATURED LISTING
 by Carlee Jahelka, BA
 PERSONAL REAL ESTATE CORPORATION

C 250.616.1020
 P 250.751.0804
 TF 1.800.377.4374
 carlee@jahelkagroup.com
 www.jahelkarealestategroup.com
 www.vancouverislandpropertysearch.com



Royal LePage Nanaimo Realty
 4200 N Island Highway, Nanaimo
 BC V9T 1W6

