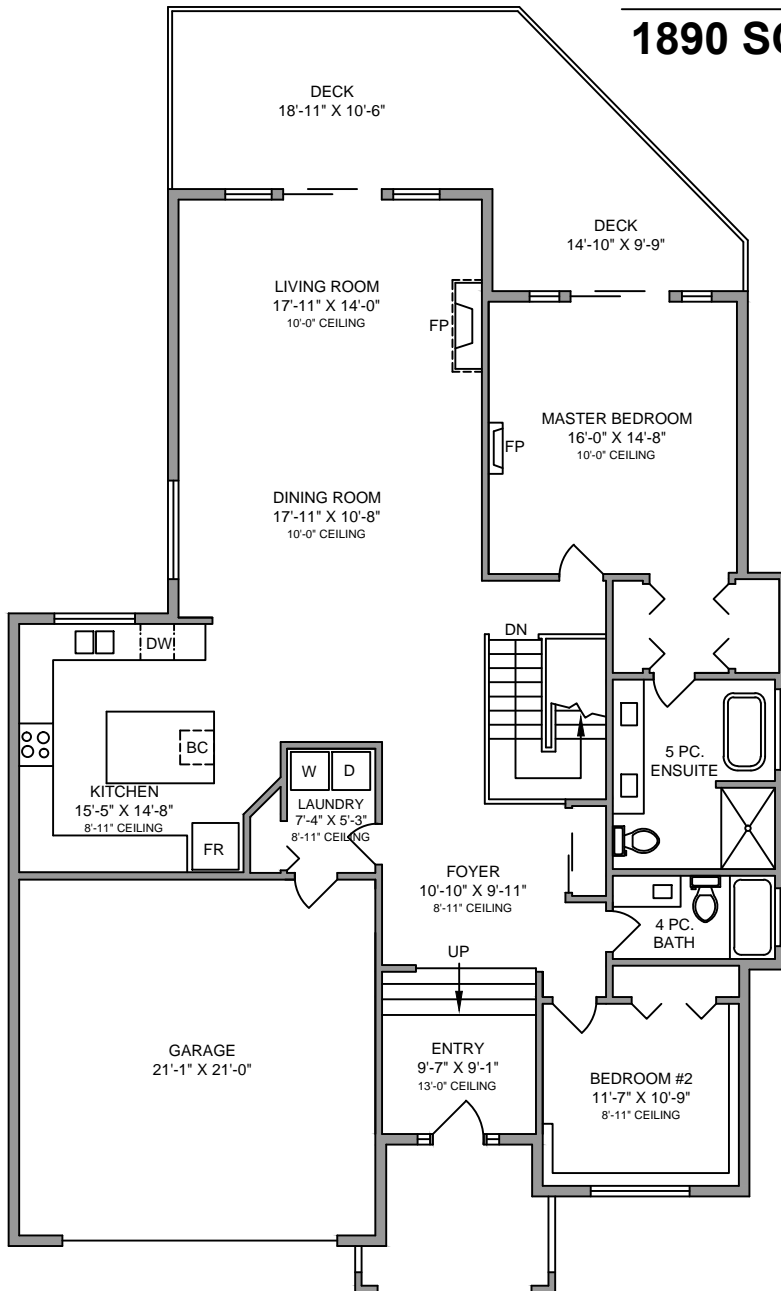


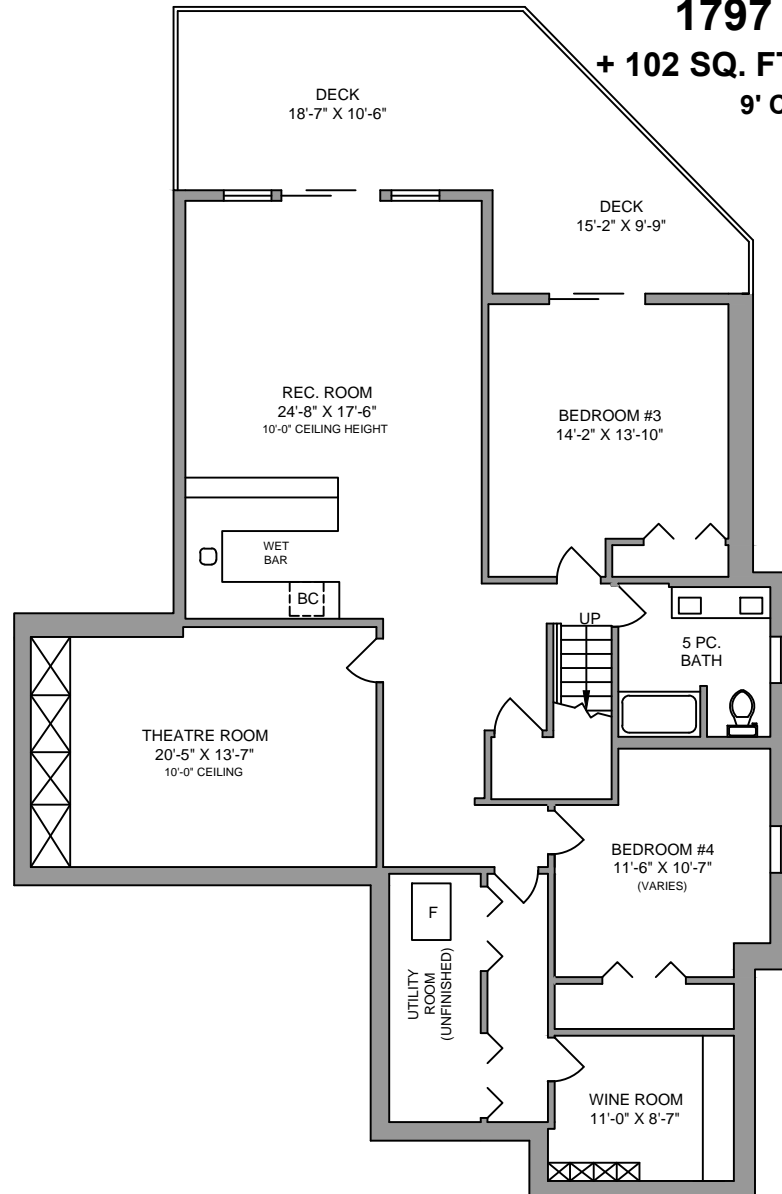
MAIN FLOOR 1890 SQ. FT.



LOWER FLOOR

1797 SQ. FT.

+ 102 SQ. FT. UNFINISHED
9' CEILING



NORTH



0' 5' 10'
SCALE

3737 GLEN OAKS AVENUE

MARCH 21, 2017

Prepared by PROPER MEASURE MID ISLAND for the exclusive use of JAHELKA REAL ESTATE GROUP

Plans may not be 100% accurate. Buyer must verify any critical measurement.

Private resale or modification of floor plans to a third party by any individual or entity other than Proper Measure Mid Island is strictly prohibited

| FLOOR | AREA (SQ. FT.) | | | |
|-------|----------------|------------|--------|--------------|
| | FINISHED | UNFINISHED | GARAGE | DECK / PATIO |
| MAIN | 1890 | - | 472 | 353 |
| LOWER | 1797 | 102 | - | 359 |
| TOTAL | 3687 | 102 | 472 | 712 |

