

186 - 1720 DUFFERIN CRESCENT

Central Nanaimo | Nanaimo

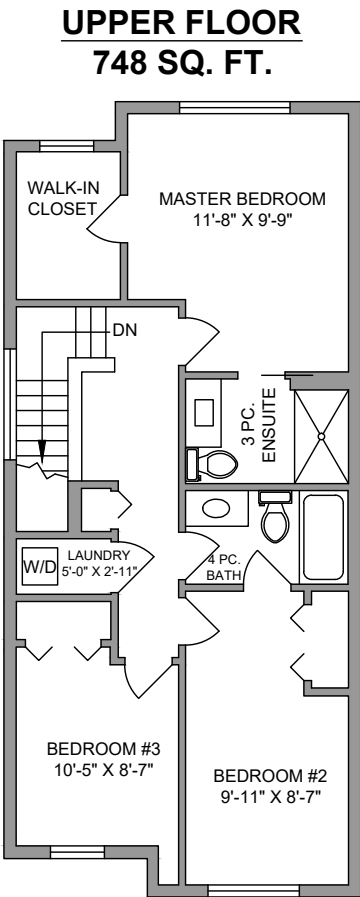
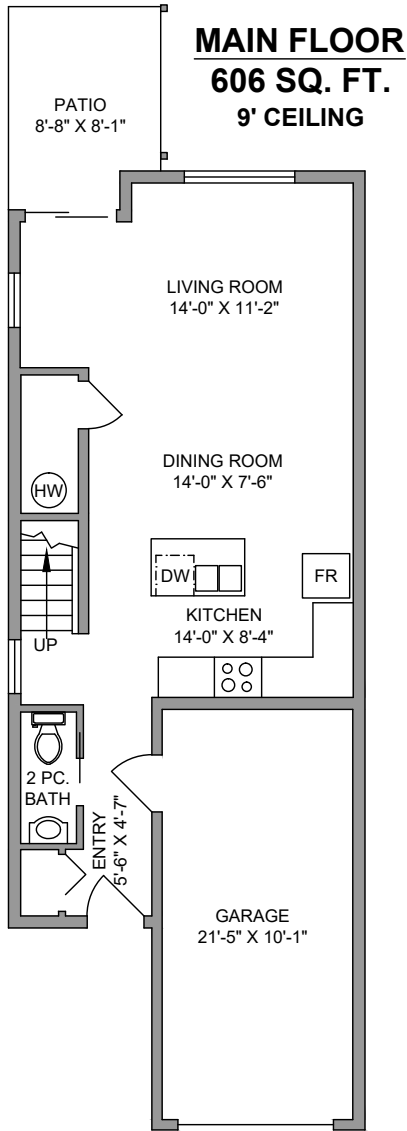
\$399,900



JAHELKA REAL ESTATE GROUP

Real Estate Redefined





| 186 - 1720 Dufferin Crescent | | | |
|--|----------------|--------|--------------|
| PLANS MAY NOT BE 100% ACCURATE, IF CRITICAL BUYER TO VERIFY. | | | |
| FLOOR | AREA (SQ. FT.) | | |
| | FINISHED | GARAGE | DECK / PATIO |
| MAIN | 606 | 236 | 82 |
| UPPER | 748 | - | - |
| TOTAL | 1354 | 236 | 82 |



WELCOME HOME...

Well designed, move-in ready 2-year old townhome located in the Village at Summerhill in Central Nanaimo, in close proximity to all amenities

From the moment you enter this 3 bed, 3 bath, 1,354 sqft townhome, you will be impressed by the modern design, quality finishings and open concept main floor living area, accentuated by 9' ceilings. The well-appointed and functional kitchen, complete with shaker-style cabinet doors, stainless steel appliances and an island that also serves as an eating bar, transitions to the formal dining area, the perfect venue for gatherings. The comfortable living space, overlooking the backyard and accessed via a slider, leads directly to a paved deck area, and then on to dedicated green space and to the community gardens, one of the few townhomes in this development to enjoy this backdrop. A powder room, storage, and access to the oversized single-car garage complete the main floor.

Upstairs features a master suite with a large walk-in closet and a spacious 3-piece ensuite just steps from 2 further bedrooms, one of which has direct access to the 4-piece family bathroom; rounding off this floor is linen storage and laundry facilities.

Don't miss the opportunity to own this attractively priced and conveniently located, low maintenance, contemporary townhome.

Please verify all data and measurements if important.

FEATURES

| | |
|---------------|--|
| Complex: | The Village at Summerhill |
| Living Space: | 1,354 sqft |
| Bedrooms: | 3 |
| Bathrooms: | 3 |
| Strata Fees: | \$154 /month |
| Parking: | Single Garage, Driveway, Visitor Parking |
| Taxes: | \$2,643 |
| Year Built: | 2015 |



GIVING REDEFINED: By working with the Jahelka Real Estate Group you will become a catalyst to change the world at no cost to you, as we will donate \$1,000 of our commission cheque from EACH residential sale to build homes in developing countries as a first step in a movement towards establishing self-sustaining, thriving communities.



FEATURED LISTING
by Carlee Jahelka, BA
PERSONAL REAL ESTATE CORPORATION

C 250.616.1020
P 250.751.0804
TF 1.800.377.4374
carlee@jahelkagroup.com
www.jahelkarealestategroup.com
www.vancouverislandpropertysearch.com



JAHELKA REAL ESTATE GROUP
Real Estate Redefined



Royal LePage Nanaimo Realty
4200 N Island Highway, Nanaimo
BC V9T 1W6

