

# 223 TIMBERCREST WAY

*Hammond Bay*

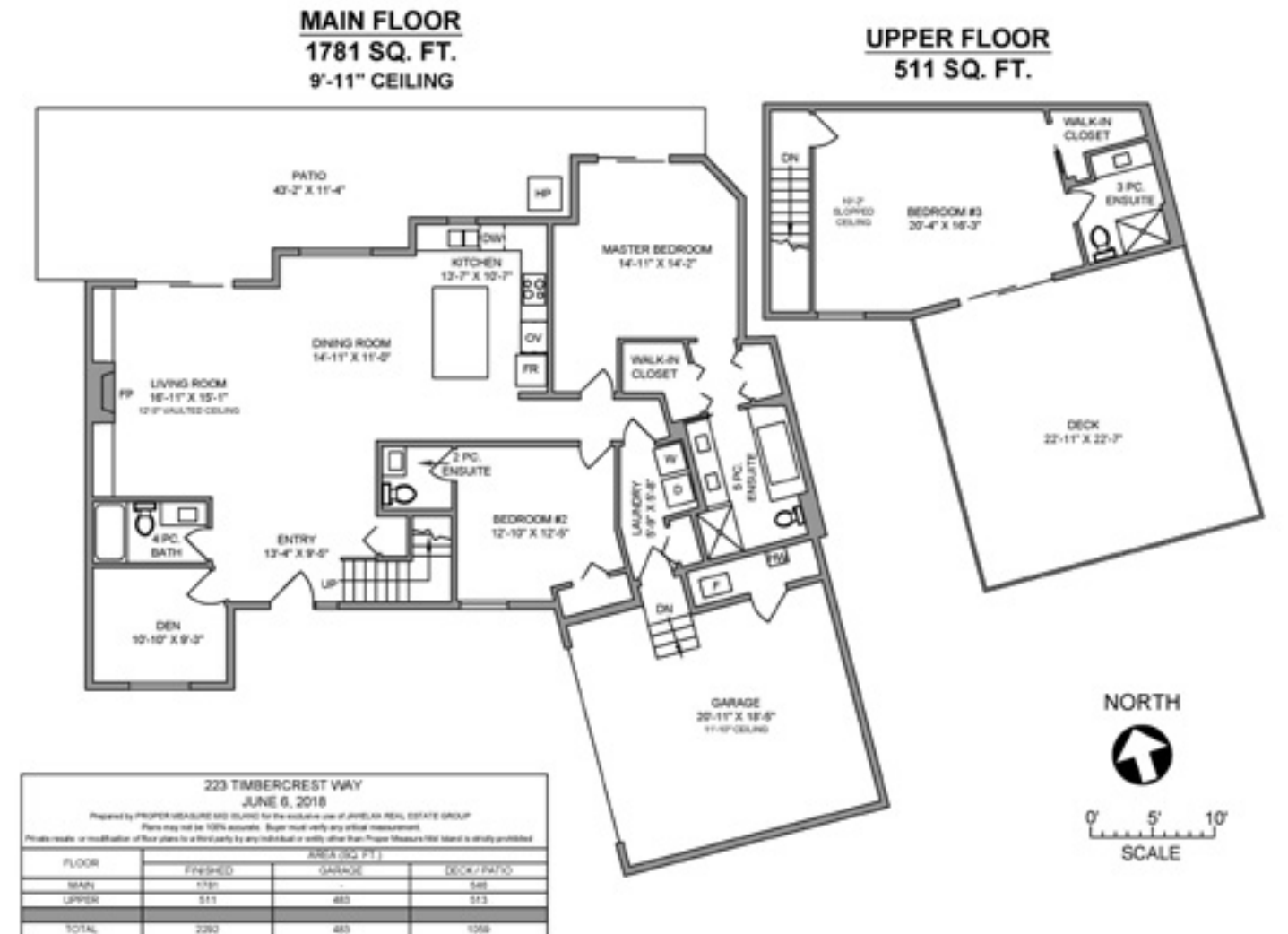


**JAHELKA REAL ESTATE GROUP**

Real Estate Redefined







## WELCOME HOME...

Custom-built level entry west coast contemporary home nestled in the forested mountainside at The Ridge at the top of prestigious Glen Oaks Drive in Hammond Bay minutes from Piper's Lagoon and Neck Point Park and a short drive to all amenities. This executive residence sits on 0.17 acres and offers 2,292 sqft of living space with 3 beds and 4 baths and an attention to detail that is sure to impress.

The grand entrance draws you into this tastefully finished home offering a den and 4-piece family bath to the left of the foyer and an open concept living area with 12' vaulted ceilings and a fireplace for cooler west coast evenings, a spacious dining room for entertaining, and a gourmet kitchen with full height cabinets, quartz counters, stainless steel appliances, and a large island with an eating bar. With easy access from the living area, the patio and fully fenced backyard with a treed backdrop provide the perfect venue for family and friends to gather on warm summer evenings.

The main floor master suite, with patio access, offers his and hers closets, a 5-piece spa-like ensuite with large, drop-in soaker tub, walk-in shower, and contemporary fittings and finishes, while the second bedroom, with a 2-piece ensuite, and laundry/mud room leading to the double garage complete the main floor.

The upstairs is dedicated to the third bedroom, featuring vaulted ceilings, a walk-in closet, a 3-piece bathroom, and boasting a 513 sqft south-facing view deck, the ideal place to soak in the early morning rays or to unwind on at the end of the day; this space could easily serve a variety of purposes.

If you are looking for a modern, tastefully finished executive home in a highly desirable, picturesque location look no further.

Data & measurements provided by Proper Measure and the Property Report and should be verified if important. Price+GST.

## FEATURES

*Neighbourhood:* The Ridge

*Bedrooms:* 3

*Bathrooms:* 4

*Style:* Westcoast

Contemporary,  
Main Level Entry

*Living Space:* 2,292 sqft.

*Lot Size:* 0.17 acres

*Year Built:* 2018







GIVING REDEFINED: By working with the Jahelka Real Estate Group you will become a catalyst to change the world at no cost to you, as we will donate \$1,000 of our commission cheque from EACH residential sale to the *Community Builders International Fund*, which focuses on building self-sustaining, thriving communities in developing nations.



**FEATURED LISTING**

by *Carlee Jahelka, BA*  
PERSONAL REAL ESTATE CORPORATION

C 250.616.1020  
P 250.751.0804  
TF 1.800.377.4374  
carlee@jahelkagroup.com  
www.jahelkarealestategroup.com  
www.vancouverislandpropertysearch.com



**JAHELKA REAL ESTATE GROUP**  
Real Estate Redefined



Royal LePage Nanaimo Realty  
4200 N Island Highway, Nanaimo  
BC V9T 1W6

