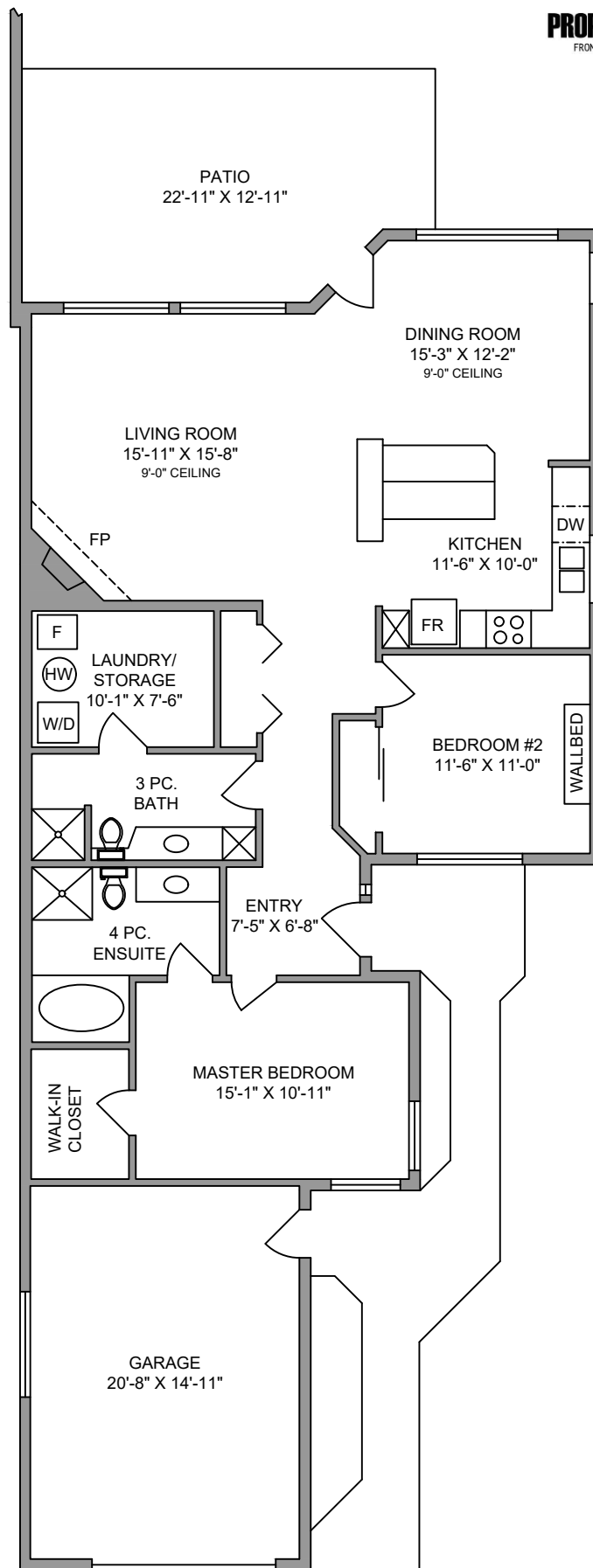


MAIN FLOOR 1422 SQ. FT.



NORTH



0' 5' 10'

SCALE

34-529 JOHNSTONE ROAD

JULY 15, 2019

Prepared by PROPER MEASURE MID ISLAND for the exclusive use of JAHNELKA REAL ESTATE GROUP

Plans may not be 100% accurate. Buyer must verify any critical measurement.

Private resale or modification of floor plans to a third party by any individual or entity other than Proper Measure Mid Island is strictly prohibited

FLOOR	AREA (SQ. FT.)		
	FINISHED	GARAGE	DECK / PATIO
TOTAL	1422	336	276

